

Creative Commons 4.0 NC SA BY FREE DISTRIBUTION ONLY - NOT FOR SALE

MINERVA

Hazel M.S.
Style
Book



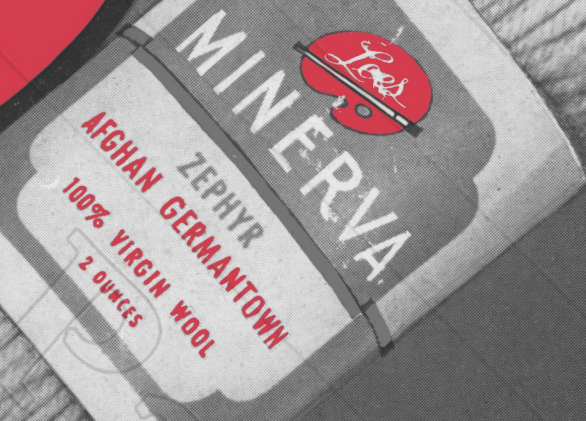
www.antiquepatternlibrary.org 2021.02

VOLUME 71

PRICE 25¢



Lees



Good yarn *makes* good knitting! That's why more and more smart knitters choose Minerva Hand-Knitting Yarns—"the yarn that's worth your while." Spun by the English Bradford system from long fibre wool, Minerva Yarns have that smooth softness that makes for better knitting—and keeps the shape in the finished garment.

Ask for Minerva when you buy yarn. And look for the LEES trademark on every label—LEES, the name that has meant the finest in wool yarns for more than a century . . .

Antique Pattern Library



"COLONY CLUB"
NUMBER 7102

Do it the easy way! Choose your style and yarn with the aid of this index. Assure satisfactory results by following instructions written for your style and your yarn.

INDEX

"STAR-SAPPHIRE" COVER—No. 7100

Blue is style news . . . so are the short sleeves and large leather buttons. All-over cable pattern with ribbing trim. In MINERVA-Featherweight Knitting Worsted or Minerva Sock & Sweater Yarn. Size 14 to 16.

[Materials required and instructions on page 26]

"COMPANIONS" Nos. 7101 and 7101-A ILLUSTRATED ON PAGE 24

It will be "on the go" with you from the minute it is made! *Cardigan* with a difference! Plain stockinette stitch in two parallel cables skip the shoulders, end in pockets . . . two cables on sleeves—one crossing the front shoulders . . . one crossing back of neck. In MINERVA-Featherweight Knitting Worsted . . . Heather Featherweight Knitting Worsted . . . Sock & Sweater Yarn . . . Heather Sock & Sweater Yarn. Sizes 14—16 and 18. *Slipover*. In MINERVA-Featherdown . . . Sports Yarn . . . Fingering Yarn . . . Monterey. Sizes 14—16—18 and 20.

[Materials required and instructions on page 25]

"COLONY CLUB" No. 7102

Figure-flattering blouse and skirt duet. Chic as anything you'll see. Fashion note—the high-tie neck . . . push-up sleeves. Blouse—plain stockinette with moss stitch bows at neck and sleeves. Skirt—small block stitch. In MINERVA-Monterey . . . Fingering Yarn . . . Sports Yarn . . . Heather Sports Yarn . . . Featherdown. Sizes 14—16—18 and 20.

[Materials required and instructions on page 27]

MINERVA FEATHERDOWN

(1 ounce ball—about 256 yards to ball)

BLOUSE AND SKIRT	No. 7102	Page ii
DRESS, PLAID SKIRT	No. 7103	Page 2
SUIT, TWO-PIECE	No. 7104	Page 4
DRESS, PLAID SKIRT	No. 7106	Page 8
CARDIGAN, FAGOTING TRIM	No. 7107	Page 10
CAPE, LACE STITCH	No. 7109	Page 14
SLIPOVER, FITTED	No. 7113	Page 20
SLIPOVER, BLACK	No. 7101-A	Page 24

MINERVA SPORTS YARN

OR

MINERVA HEATHER SPORTS YARN

(2 ounce ball—about 373 yards to ball)

BLOUSE AND SKIRT	No. 7102	Page ii
DRESS, PLAID SKIRT	No. 7103	Page 2
SUIT, TWO-PIECE	No. 7104	Page 4
DRESS, PLAID SKIRT	No. 7106	Page 8
CARDIGAN, FAGOTING TRIM	No. 7107	Page 10
SLIPOVER, FITTED	No. 7113	Page 20
SLIPOVER, BLACK	No. 7101-A	Page 24

MINERVA MONTEREY

(1 ounce skein—about 130 yards to skein)

BLOUSE AND SKIRT	No. 7102	Page ii
DRESS, PLAID SKIRT	No. 7103	Page 2
SUIT, TWO-PIECE	No. 7104	Page 4
SLIPOVER, BLACK	No. 7101-A	Page 24

MINERVA FINGERING YARN

(2 ounce skein—about 395 yards to skein)

BLOUSE AND SKIRT	No. 7102	Page ii
DRESS, PLAID SKIRT	No. 7103	Page 2
SUIT, TWO-PIECE	No. 7104	Page 4
DRESS	No. 7106	Page 8
CARDIGAN, FAGOTING TRIM	No. 7107	Page 10
CAPE, LACE STITCH	No. 7109	Page 14
SLIPOVER, FITTED	No. 7113	Page 20
SLIPOVER, BLACK	No. 7101-A	Page 24

MINERVA FEATHERWEIGHT KNITTING WORSTED

OR

MINERVA HEATHER FEATHERWEIGHT KNITTING WORSTED

(2 ounce skein—about 210 yards to skein)

CARDIGAN, ALL-OVER CABLE	No. 7100	Cover
SLIPOVER, CABLE	No. 7108	Page 12
SLIPOVER, SLEEVELESS	No. 7110	Page 16
CARDIGAN, RIBBED BACK	No. 7111	Page 16
SLIPOVER, NORWEGIAN	No. 7112	Page 18
CARDIGAN, STRIPED	No. 7114	Page 22
CARDIGAN, CABLE	No. 7101	Page 24

MINERVA SOCK & SWEATER YARN

OR

MINERVA HEATHER SOCK & SWEATER YARN

(4 ounce skein—about 490 yards to skein)

CARDIGAN, ALL-OVER CABLE	No. 7100	Cover
SLIPOVER, CABLE	No. 7108	Page 12
SLIPOVER, SLEEVELESS	No. 7110	Page 16
CARDIGAN, RIBBED BACK	No. 7111	Page 16
SLIPOVER, NORWEGIAN	No. 7112	Page 18
CARDIGAN, STRIPED	No. 7114	Page 22
CARDIGAN, CABLE	No. 7101	Page 24

MINERVA KNITTING WORSTED

OR

MINERVA HEATHER KNITTING WORSTED

(4 ounce skein—about 280 yards to skein)

COAT, BOX	No. 7105	Page 6
---------------------	--------------------	--------

MINERVA AFGHAN GERMANTOWN

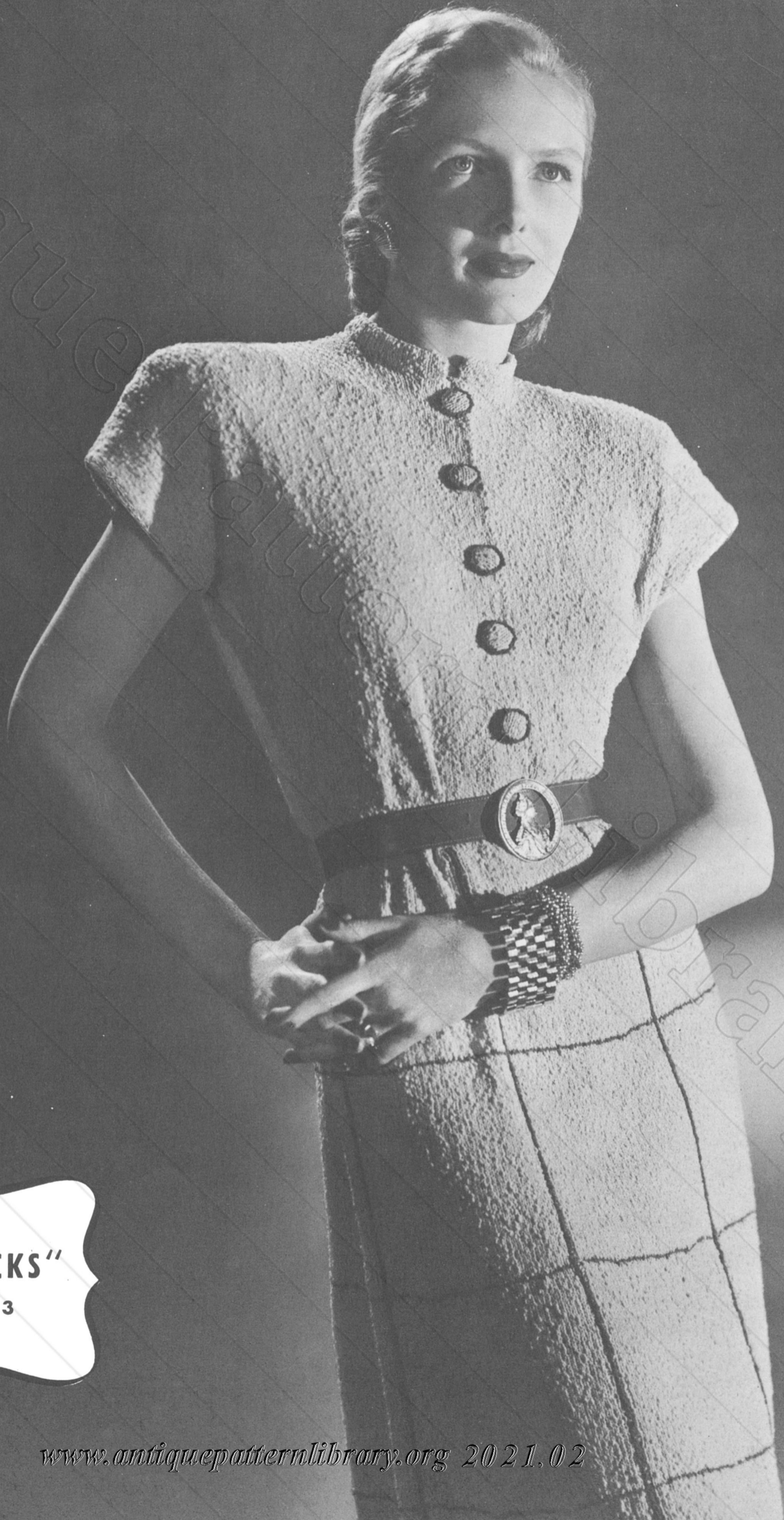
(2 ounce skein—about 210 yards to skein)

COAT, BOX	No. 7105	Page 6
---------------------	--------------------	--------

MINERVA POMPADOUR YARN

(1 ounce ball—about 128 yards to ball)

SLIPOVER, CABLE	No. 7108	Page 12
---------------------------	--------------------	---------



"CHINESE CHECKS"
NUMBER 7103

"CHINESE CHECKS"

No. 7103

Good anywhere, this spectator sports dress. Chic numbers—coolie neck . . . cap sleeves . . . slimming lines. Waist—plain stockinette. Skirt—plaid. Buttons—knitted with crocheted edge. In MINERVA-Monterey . . . Fingering Yarn . . . Sports Yarn . . . Featherdown. Sizes 14—16—18 and 20.

MATERIALS REQUIRED:

Minerva Monterey (1 ounce skein)
 Size 14 Size 16 Size 18 Size 20
 Beige 22 Skeins 25 Skeins 28 Skeins 31 Skeins
 Green 1 Skein 1 Skein 1 Skein 1 Skein

Knitting Needles: 1 Pair Standard Size 2—14 inch
 1 Steel Circular Skirt Needle
 Standard Size 2—29 inch

Gauge: 8 Sts. to 1 inch
 1 Composition Crochet Hook Standard Size 2—6 inch

OR

Minerva Fingering Yarn (2 ounce skein)
 Size 14 Size 16 Size 18 Size 20
 Beige 8 Skeins 9 Skeins 10 Skeins 11 Skeins
 Green 1 Skein 1 Skein 1 Skein 1 Skein

—OR—

Minerva Sports Yarn (2 ounce ball)
 Size 14 Size 16 Size 18 Size 20
 Brown Mist 8 Balls 9 Balls 10 Balls 11 Balls
 Green 1 Ball 1 Ball 1 Ball 1 Ball

—OR—

Minerva Featherdown (1 ounce ball)
 Size 14 Size 16 Size 18 Size 20
 Brown Mist 12 Balls 13 Balls 14 Balls 15 Balls
 Green 1 Ball 1 Ball 1 Ball 1 Ball

Knitting Needles: 1 Pair Standard Size 3—14 inch
 1 Steel Circular Skirt Needle
 Standard Size 3—29 inch

Gauge: 8 Sts. to 1 inch
 1 Composition Crochet Hook Standard Size 2—6 inch

Sizes: 14 16 18 20

(The vertical Green stripes are crocheted on after the dress is completed).

SKIRT: Starting at bottom with Circular Needle and Beige cast on
 360 Sts. 378 Sts. 396 Sts. 414 Sts.

Work back and forth for 4 rows (to prevent twisting of Sts.) as follows:

Row 1— *K. 58, P.2 *K.61, P.2 *K.64, P.2 *K.67, P.2 repeat from * across

Row 2— *K. 2, P. 58 *K.2, P.61 *K.2, P. 64 *K.2, P.67 repeat from * across.

Repeat Rows 1 and 2, then join (being careful not to twist work) and repeat Row 1 for 6 rows more, drop Beige but do not break.

Row 11—With Green K. 1 row, break yarn, (K. 1 row with Green every 6½ inches 3 times more).

With Beige repeat Row 1 for 2 inches.

Next row decrease 2 Sts. in each of the 6 K. sections as follows:

	*K. 18	*K. 19	*K. 20	*K. 21
K. 2 together	K. 18	K. 19	K. 20	K. 21
K. 2. together	K. 18	K. 19	K. 20	K. 21

P. 2.

Repeat from * around. (12 Sts. decreased)

Next row

*K.56, P. 2 *K.59, P.2 *K.62, P.2 *K.65, P.2 repeat from * around.

Decrease 12 Sts. in this manner every 2½ inches 6 times more (having 1 St. less between decreases on each decreasing row).

Sts. on Needle: (18 inches from start)
 276 Sts. 294 Sts. 312 Sts. 330 Sts.

Work 3 inches even

Decrease 12 Sts. as before, then decrease 12 Sts. every inch 4 times more.

Sts. on Needle:
 216 Sts. 234 Sts. 252 Sts. 270 Sts.

When Skirt measures 26 inches from start (or desired length), discontinue the P. Sts. and divide Sts. for Blouse as follows:

BLOUSE:

BACK: (Including the last P. St. of previous row), with 14 inch Needle K. across

108 Sts. 117 Sts. 126 Sts. 135 Sts.

(leave remaining Sts. on Circular Needle for St. Holder).
 Work in Stockinette St., increasing 1 St. each side every 4th row

19 times 18 times 17 times 16 times

Sts. on Needle:
 146 Sts. 153 Sts. 160 Sts. 167 Sts.

When Back measures 8 inches from start (or desired length to underarm), cast on 14 Sts. each side for Cap Sleeves.

When sleeve edge measures
 7" 7" 7½" 8"

To Shape Shoulders: Bind off
 9 Sts. 11 Sts. 13 Sts. 17 Sts.
 at the beginning of each of the next 2 rows, then bind off 16 Sts. at the beginning of each of the next 8 rows. Bind off remaining Sts. for back of neck.

LEFT FRONT: K. across next
 54 Sts. 59 Sts. 63 Sts. 68 Sts.

cast on 6 Sts. at center front for underlap.

Increase 1 St. every 4th row at side edge
 19 times 18 times 18 times 17 times

When Front measures same as Back to underarm, cast on 14 Sts. for Cap Sleeve.

When front edge measures
 14" 14½" 14½" 15"

To Shape Neck: Bind off 8 Sts. at front edge, then bind off 2 Sts. every other row
 6 times 7 times 8 times 8 times
 at the same time when sleeve edge measures same as at Back,

To Shape Shoulder: Bind off
 9 Sts. 11 Sts. 13 Sts. 17 Sts.
 at sleeve edge, then bind off 16 Sts. every other row 4 times.

(Continued on page 29)

Antique



"DOT & DASH"
NUMBER 7104

"DOT & DASH"

No. 7104

A two-piece suit treasure for any wardrobe—for college . . . for career . . . for club and committees. Jacket—plain stockinette with pocket under-tab spiced with contrasting color. Skirt—smartly ribbed—a tip for the hip-conscious! In MINERVA-Monterey . . . Fingering Yarn . . . Sports Yarn . . . Heather Sports Yarn . . . Featherdown. Sizes 14—16—18 and 20.

MATERIALS REQUIRED:

Minerva Monterey (1 ounce skein)
 Size 14 Size 16 Size 18 Size 20
 Dark Color 26 Skeins 29 Skeins 32 Skeins 35 Skeins
 Light Color 1 Skein 1 Skein 1 Skein 1 Skein

Knitting Needles: 1 Pair Standard Size 2—14 inch
 1 Steel Circular Skirt Needle
 Standard Size 2—29 inch

Gauge: 8 Sts. to 1 inch

1 Composition Crochet Hook Standard Size 2—6 inch

OR

Minerva Fingering Yarn (2 ounce skein)
 Size 14 Size 16 Size 18 Size 20
 Dark Color 9 Skeins 10 Skeins 11 Skeins 12 Skeins
 Light Color 1 Skein 1 Skein 1 Skein 1 Skein

—OR—

Minerva Sports Yarn (2 ounce ball)

—OR—

Minerva Heather Sports Yarn (2 ounce ball)
 Size 14 Size 16 Size 18 Size 20
 Dark Color 9 Balls 10 Balls 11 Balls 12 Balls
 Light Color 1 Ball 1 Ball 1 Ball 1 Ball

—OR—

Minerva Featherdown (1 ounce ball)
 Size 14 Size 16 Size 18 Size 20
 Dark Color 14 Balls 15 Balls 17 Balls 18 Balls
 Light Color 1 Ball 1 Ball 1 Ball 1 Ball

Knitting Needles: 1 Pair Standard Size 3—14 inch
 1 Steel Circular Skirt Needle
 Standard Size 3—29 inch

Gauge: 8 Sts. to 1 inch

1 Composition Crochet Hook—Standard Size 2—6 inch

Sizes: 14 16 18 20

SKIRT: With Circular Needle cast on
 364 Sts. 378 Sts. 392 Sts. 406 Sts.

Row 1—* K. 2, P. 2, K. 2, P. 8, repeat from * across.

Row 2—* K. 8, P. 2, K. 2, P. 2, repeat from * across.

Repeat Rows 1 and 2, then join and repeat Row 1 for
 4" 4" 4" 5"

Next row decrease 1 St. in every other P. 8 section,
 decreasing

13 Sts. 13 Sts. 14 Sts. 14 Sts.

Work 4 inches even.

Next row decrease 1 St. in every other P. section (alternating decreases), decreasing

13 Sts. 14 Sts. 14 Sts. 15 Sts.

Work 4 inches even.

Repeat first decreasing row, decreasing

13 Sts. 13 Sts. 14 Sts. 14 Sts.

Work 3 inches even.

Repeat second decreasing row, decreasing
 13 Sts. 14 Sts. 14 Sts. 15 Sts.

Work 3 inches even.

Repeat first decreasing row, decreasing
 13 Sts. 13 Sts. 14 Sts. 14 Sts.

Sts. on Needle: 299 Sts. 311 Sts. 322 Sts. 334 Sts.

Continue to alternate decreasing rows every
 1 inch 1 inch 1 inch 1½ inches
 6 times 5 times 5 times 4 times

Sts. on Needle: 221 Sts. 243 Sts. 252 Sts. 276 Sts.

Work even until Skirt measures 26 inches or desired length.
 Bind off.

Crochet casing for elastic at inside of top edge. Join first 4 rows together at bottom of Skirt. Work 1 row of S. C. around bottom edge.

JACKET:

BACK: Cast on
 132 Sts. 140 Sts. 148 Sts. 156 Sts.

Work in Stockinette St. even for 1 inch.

Decrease 1 St. each side, then decrease 1 St. each side every 4th row 8 times more.

Sts. on Needle: 114 Sts. 122 Sts. 130 Sts. 138 Sts.

When work measures 6 inches from start, increase 1 St. each side, then increase 1 St. each side every 6th row 7 times more.

Sts. on Needle: 130 Sts. 138 Sts. 146 Sts. 154 Sts.

When work measures
 13" 13" 13½" 14"

To Shape Armholes: Bind off 6 Sts. at beginning of each of the next 2 rows, then decrease 1 St. each side every other row 6 times.

When armholes measure
 3½" 4" 4½" 5"
 (measured straight up from bound off Sts. at underarm), increase 1 St. each side, then every inch 2 times more.

When armholes measure
 7" 7½" 7½" 8"

To Shape Shoulders: Bind off
 13 Sts. 14 Sts. 15 Sts. 16 Sts.
 at the beginning of each of the next 6 rows, bind off remaining Sts. for back of neck.

POCKET FACING: (for left front) Cast on 28 Sts., work in Stockinette St. for 3 inches, slip Sts. on St. Holder.

LEFT FRONT:

Cast on
 72 Sts. 76 Sts. 80 Sts. 84 Sts.

Work in Stockinette St. even for 2 inches. Decrease 1 St. at side edge, then decrease 1 St. at same edge every 4th row 6 times more.

When work measures 6 inches from start, increase 1 St. at side edge, then increase 1 St. at same edge every 4th row 11 times more.

When work measures
 13" 13" 13½" 14"

To Shape Armhole: Bind off 6 Sts. at side edge, then decrease 1 St. every other row 6 times.

(Continued on page 30)

Antique Pattern Library



"BOX TOP"
NUMBER 7105

"BOX TOP"

No. 7105

A premium winner wherever worn! Boxy coat for easy slipping over dress or suit. Pattern stitch—front bound with plain knitting. Slit pockets. Sizes 12 to 14 and 16 to 18.

MATERIALS REQUIRED:

Minerva Knitting Worsted (4 ounce skein)

—OR—

Minerva Heather Knitting Worsted (4 ounce skein)

Size 12 to 14	Size 16 to 18
7 Skeins	8 Skeins

—OR—

Minerva Afghan Germantown (2 ounce skein)

Size 12 to 14	Size 16 to 18
10 Skeins	12 Skeins

Knitting Needles: 1 Pair Standard Size 4—14 inch

Gauge: 6 Sts. to 1 inch.

PATTERN STITCH: (Multiple of 4 plus 1)

Row 1—Slip 1, * K. 1, P. 1, K. 1, slip 1, repeat from * across.

Row 2—P. 1, * K. 3, P. 1, repeat from * across.

Row 3—Same as Row 1.

Row 4—P. across.

Repeat from Row 1 for Pattern.

Sizes:	12 to 14	16 to 18
--------	----------	----------

BACK: Cast on
121 Sts. 129 Sts.

Row 1—K. across row.

Row 2—P. across row.

Repeat these 2 rows once more.

Row 5—P. across row on right side for turn of hem.

Row 6—P. across row.

Start Pattern Stitch on next row and work even until work measures 18 inches from P. row of hem.

To Shape Armholes: Bind off 11 Sts. at the beginning of each of the next 2 rows (first 4 bound off Sts. are for seam), then bind off 2 Sts. at the beginning of each of the next 6 rows. Decrease 1 St. each side every other row 7 times.

Sts. on Needle:	73 Sts.	81 Sts.
-----------------	---------	---------

When armholes measure	7½"	8"
-----------------------	-----	----

To Shape Shoulders: Bind off
8 Sts. 9 Sts.
at the beginning of each of the next 6 rows. Bind off remaining Sts.

RIGHT FRONT: Cast on
69 Sts. 73 Sts.

Work same as Back until work measures 5½ inches from P. row of hem, then divide Sts. for Pocket opening as follows:

Work across	29 Sts.	33 Sts.
-------------	---------	---------

Slip remaining Sts. on St. Holder. Cast on 4 Sts. for overlap and continue in Pattern St. on these
33 Sts. 37 Sts.

for 5½ inches, bind off the 4 cast on Sts., slip Sts. on St. Holder and on remaining 40 Sts. work even for 5½ inches. Join and continue working even until work measures 18 inches from P. row of hem.

To Shape Armhole: Bind off 12 Sts. at side edge, then decrease 1 St. every other row 8 times, at the same time increase 1 St. at front edge every 6th row
7 times 8 times

When front edge measures 25 inches from P. row,

To Shape Neck: Bind off
26 Sts: 28 Sts.
at front edge, then bind off 2 Sts. every other row 3 times, at the same time when armhole measures
7½" 8"

To Shape Shoulder: Bind off
8 Sts. 9 Sts.
at side edge every other row 3 times.

Work Left Front to correspond.

SLEEVES: Cast on
89 Sts. 93 Sts.

Row 1—K. across row.

Row 2—P. across row.

Repeat these 2 rows once more.

Row 5—P. across row on right side for turn of hem.

Row 6—P. across row.

Start Pattern on next row and work even until Sleeve measures 6 inches from P. row of hem. Increase 1 St. each side, then increase 1 St. each side every 2 inches 3 times more.

Sts. on Needle:	97 Sts.	101 Sts.
-----------------	---------	----------

When Sleeve measures 17 inches, bind off 6 Sts. at the beginning of each of the next 2 rows, then decrease 1 St. each side every other row 30 times. Bind off remaining Sts.

Sew hem at bottom of Back, Fronts and Sleeves. Sew Shoulder seams. Sew underarm seams (4 Sts. from edge) starting 6 inches from hem, then turn back the 4 Sts. at opening for hem and sew. Sew sleeve seams and sew Sleeves in place.

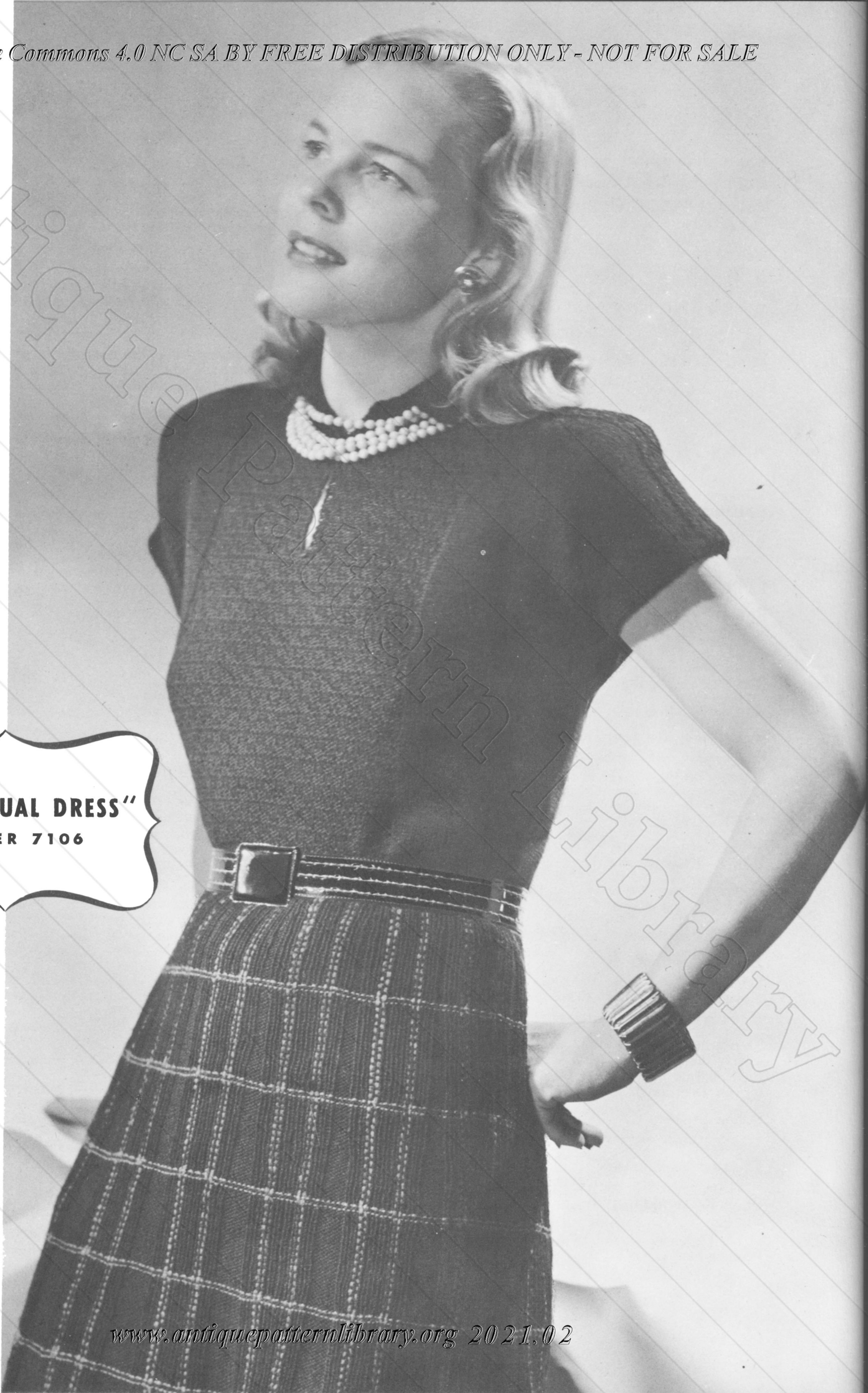
POCKET BORDERS: Cast on 9 Sts., work in Stockinette St. for 6 inches, bind off. Fold and sew over edge of overlap.

COAT BORDER: Work same as Pocket Border for about
70" 72"
to fit around front edges and neck. Fold over edge of Coat and sew.

POCKETS: Make Pockets of material of matching color and sew to inside edge of Pocket openings.

Antique Pattern Library

"THAT CASUAL DRESS"
NUMBER 7106



"THAT CASUAL DRESS"

No. 7106

The basis of the urban wardrobe . . . takes equally well to "dressing up or down." Waist—stockinette with pattern stitch in front panel and shoulders. Skirt—perky plaid. In MINERVA—Sports Yarn . . . Featherdown. Sizes 14 to 16 and 18 to 20.

MATERIALS REQUIRED:

Minerva Fingering Yarn (2 ounce skein)
 Size 14 to 16 Size 18 to 20
 Black 6 Skeins 7 Skeins
 Carioca Green 4 Skeins 5 Skeins
 California Burgundy 1 Skein 1 Skein

—OR—

Minerva Sports Yarn (2 ounce ball)
 Size 14 to 16 Size 18 to 20
 Black 10 Balls 12 Balls
 Green 1 Ball 1 Ball
 Magenta 1 Ball 1 Ball

—OR—

Minerva Featherdown (1 ounce ball)
 Size 14 to 16 Size 18 to 20
 Black 12 Balls 14 Balls
 Green 1 Ball 1 Ball
 Magenta 1 Ball 1 Ball

Knitting Needles: 1 Pair Standard Size 3—14 inch
 1 Steel Circular Skirt Needle Standard Size 3—29 inch

Gauge: 8 Sts. to 1 inch

1 Composition Crochet Hook Standard Size 2—6 inch

1 Blunt end Tapestry Needle (for weaving vertical lines)

Sizes:	14 to 16	18 to 20
---------------	-----------------	-----------------

SKIRT: With Black cast on	378 Sts.	405 Sts.
----------------------------------	-----------------	-----------------

Join

Row 1—* P. 12, then K. 1, P. 1, for 15 Sts., repeat from * around

14 Panels	15 Panels
------------------	------------------

Repeat Row 1 for 1½ inches.

* * Next row join Green (drop Black but do not break). P. 1 row, break Green Strand. Pick up Black and P. 1 row.

Repeat Row 1 for 3 inches.

Next row join Magenta (Fingering Yarn—Burgundy), P. 1 row, Black P. 1 row. Repeat Row 1 for 3 inches.

Repeat Pattern from ** for 26 inches (or desired length) from start and decrease in P. sections as follows: Work even for 4 inches (from start), then decrease 1 St. in center of each P. 12 section (by P. 2 together). Repeat decreases every 2 inches 9 times more.

Sts. on Needle:

238 Sts.	255 Sts.
-----------------	-----------------

Work even for 3 inches, bind off.

Weave vertical lines with double strand of yarn (alternating 2 lines of Green and 2 lines of Magenta or Burgundy) in 4th and 5th St. and 11th and 12th St. in every Ribbing section. With Black work 1 row of S. C. around bottom of Skirt.

BLOUSE: Front: With Black (Fingering Yarn—Green),	104 Sts.	112 Sts.
----------------------------------------------------------	-----------------	-----------------

Row 1—K.

Row 2	P. 26	P. 30
--------------	--------------	--------------

K. 52	K. 52
--------------	--------------

P. 26	P. 30
--------------	--------------

Row 3—	K. 26	K. 30
---------------	--------------	--------------

* P. 2, K. 2, repeat from * 12 times more,	K. 26	K. 30
--------------------------------------------	--------------	--------------

Row 4—	P. 26	P. 30
---------------	--------------	--------------

* P. 2, K. 2, repeat from * 12 times more,	P. 26	P. 30
--------------------------------------------	--------------	--------------

Row 5— Increase 1 St. in first St.,	K. 25	K. 29
--------------------------------------------	--------------	--------------

* K. 2, P. 2, repeat from * 12 times more,	K. 25	K. 29
--------------------------------------------	--------------	--------------

increase 1 St. in last St.

Row 6—	P. 27	P. 31
---------------	--------------	--------------

* K. 2, P. 2, repeat from * 12 times more,	P. 27	P. 31
--------------------------------------------	--------------	--------------

Repeat Pattern St. from Row 1 on 52 center Sts. for Bib and increase 1 St. each side every 4th row 18 times more.

Sts. on Needle:

142 Sts.	150 Sts.
-----------------	-----------------

Work **3 rows** then cast on 14 Sts. each side for Cap Sleeves. Next row work to center. (Front opening), slip remaining

85 Sts.	89 Sts.
----------------	----------------

on St. Holder, work Left side. Continue to work Pattern St. on 26 center Sts. and increase 1 St. every 4th row at sleeve edge 7 times.

Sts. on Needle:

92 Sts.	96 Sts.
----------------	----------------

When Sleeve measures

5½"	6"
------------	-----------

(measured from cast on Sts. at underarm), work all Sts. in Pattern St.

On next row

To Shape Neck: Bind off

14 Sts.	18 Sts.
----------------	----------------

at Front edge.

When Sleeve measures

6½"	7"
------------	-----------

To Shape Shoulder: Bind off 14 Sts., then bind off 16 Sts. every other row 4 times.

Work Right side to correspond.

BACK: Cast on

104 Sts.	112 Sts.
-----------------	-----------------

Work in Stockinette St., increasing 1 St. each side every 4th row 19 times. When Back measures same as Front to underarm, cast on 14 Sts. each side for Cap Sleeve, then increase 1 St. each side every 4th row 7 times.

When Sleeve measures

5½"	6"
------------	-----------

(same as on Front to Pattern St.); work all Sts. in Pattern St.

When sleeve edge measures same as at Front,

To Shape Shoulders: Bind off 14 Sts. at beginning of each of the next 2 rows, then bind off 16 Sts. at beginning of each of the next 8 rows. Bind off remaining Sts. for back of neck.

COLLAR: Cast on

62 Sts.	70 Sts.
----------------	----------------

Work in Pattern St., increasing 1 St. each side every other row 8 times, being careful to keep Pattern even, then work even for 1½ inches, bind off.

Sew shoulder and underarm seams, sew Collar to neck edge and join increased edge of Collar to the bound off Sts. at front edge. Join Blouse to Skirt.

AntiquePatternLibrary



"CHARM SCHOOL"
NUMBER 7107

"CHARM SCHOOL"

No. 7107

For that well-bred, well-in-the-money look. This definitely "out of the upper drawer" cardigan coat with turned down collar will be the envy of your set. Fagoting stitch for yoke, front panel, pocket tabs. In MINERVA—Sports Yarn . . . Heather Sports Yarn . . . Featherdown . . . Fingering Yarn. Sizes 14—16—18 and 20.

MATERIALS REQUIRED:

Minerva Sports Yarn (2 ounce ball)

—OR—

Minerva Heather Sports Yarn (2 ounce ball)

Size 14	Size 16	Size 18	Size 20
5 Balls	5 Balls	6 Balls	6 Balls

—OR—

Minerva Featherdown (1 ounce ball)

Size 14	Size 16	Size 18	Size 20
8 Balls	8 Balls	9 Balls	9 Balls

—OR—

Minerva Fingering Yarn (2 ounce skein)

Size 14	Size 16	Size 18	Size 20
5 Skeins	5 Skeins	6 Skeins	6 Skeins

Knitting Needles: 1 Pair Standard Size 3—14 inch

Gauge: 8 Sts. to 1 inch (Stockinette St.)

Sizes:	14	16	18	20
--------	----	----	----	----

BACK: Cast on

120 Sts.	128 Sts.	136 Sts.	144 Sts.
----------	----------	----------	----------

Work in Stockinette St. for 1 inch, K. 1 row on wrong side for turn of hem. Continue in Stockinette St. until work measures 2½ inches from start, then decrease 1 St. each side, then decrease 1 St. each side every 6th row 5 times more.

Sts. on Needle:

108 Sts.	116 Sts.	124 Sts.	132 Sts.
----------	----------	----------	----------

Work even for 2 inches, then increase 1 St. each side, then increase 1 St. each side every 8th row 9 times more.

Sts. on Needle:

128 Sts.	136 Sts.	144 Sts.	152 Sts.
----------	----------	----------	----------

Work even until Back measures 16 inches from start.

To Shape Armholes: Bind off 8 Sts. at the beginning of each of the next 2 rows, then decrease 1 St. each side every other row 12 times.

Sts. on Needle:

88 Sts.	96 Sts.	104 Sts.	112 Sts.
---------	---------	----------	----------

On 29th row from underarm start Yoke in Pattern St. as follows:

Row 1— P. 2 P. 6 P. 2 P. 6
* K. 2 together, Y. O., K. 2, P. 4, repeat from * across row ending

P. 2	P. 6	P. 2	P. 6
------	------	------	------

Row 2— K. 2 K. 6 K. 2 K. 6
* P. 2 together, Y. O., P. 2, K. 4, repeat from * across row ending

K. 2	K. 6	K. 2	K. 6
------	------	------	------

Repeat these 2 rows until armhole measures

7"	7½"	8"	8½"
----	-----	----	-----

(measured straight up from bound off Sts. at underarm).

To Shape Shoulders: Bind off

10 Sts.	11 Sts.	12 Sts.	13 Sts.
---------	---------	---------	---------

at the beginning of each of the next 6 rows. Bind off remaining

28 Sts.	30 Sts.	32 Sts.	34 Sts.
---------	---------	---------	---------

POCKET FACINGS: Cast on 28 Sts., work in Stockinette St. for 4 inches. Place Sts. on St. Holder.

RIGHT FRONT: Cast on

72 Sts.	76 Sts.	80 Sts.	84 Sts.
---------	---------	---------	---------

work in Stockinette St. for 1 inch, then K. 1 row on wrong side for turn of hem, then work as follows:

Row 1—K. 9, P. 4, * K. 2 together, Y. O., K. 2, P. 4, repeat from * once, K. to end of row.

Row 2— P. 43 P. 47 P. 51 P. 55

K. 4, * P. 2 together, Y. O., P. 2, K. 4, repeat from * once, P. 9. Repeat these 2 rows of Pattern.

When work measures 2 inches from start, K. 3 Sts. at front edge, bind off 3 Sts. for Buttonhole. Continue across row. Next row cast on 3 Sts. over bound off Sts., (work 6 more Buttonholes at front edge 2¾ inches apart).

Work decreases and increases at side edge same as on Back, at the same time when work measures 5 inches from start, work across 31 Sts., bind off the 28 Sts. for Pocket, K. to end of row.

Next row work across to Pocket opening, P. the Pocket Facing Sts. from St. Holder, work to end of row.

When work measures 16 inches from start,

To Shape Armhole: Bind off 8 Sts. at side edge, then bind off 2 Sts. every other row 3 times, then decrease 1 St. every other row 11 times.

Sts. on Needle:

51 Sts.	55 Sts.	59 Sts.	63 Sts.
---------	---------	---------	---------

On 29th row from underarm start Yoke as follows:

K. 9, work all Sts. in pattern St. across row
5 Patterns 5 Patterns 6 Patterns 6 Patterns
ending

P. 2	P. 6	P. 2	P. 6
------	------	------	------

When front edge measures

21½"	21½"	22½"	22½"
------	------	------	------

from start,

To Shape Neck: Bind off 9 Sts., then bind off 2 Sts. every other row 4 times, then decrease 1 St. every other row.
4 times 5 times 6 times 7 times

When armhole measures same as at Back,

To Shape Shoulder: Bind off

10 Sts.	11 Sts.	12 Sts.	13 Sts.
---------	---------	---------	---------

at armhole edge every other row 3 times.

Work Left Front to correspond, omitting Buttonholes.

SLEEVES: Cast on

60 Sts.	60 Sts.	68 Sts.	68 Sts.
---------	---------	---------	---------

work in Stockinette St. for 1 inch, then K. 1 row on wrong side for turn of hem. Continue in Stockinette St. until work measures 3 inches. Increase 1 St. each side, then increase 1 St. each side every ½ inch 16 times more, then every inch 2 times.

Sts. on Needle:

98 Sts.	98 Sts.	106 Sts.	106 Sts.
---------	---------	----------	----------

(Continued on page 29)

Antique Pattern Library



"POND LILY"
NUMBER 7108

"POND LILY"

No. 7108

Slipover sweater with cap sleeves, wings compliments your way. A winner with short skirts . . . a wonder with long dinner skirts. Graduated cables . . . ribbing at sleeve edges and yoke. Zipper fastener at back for trim neck line. In MINERVA-Pompadour . . . Featherweight Knitting Worsted . . . Sock & Sweater Yarn. Size 14 to 16.

MATERIALS REQUIRED:

Minerva Pompadour (1 ounce ball)
10 Balls

—OR—

Minerva Featherweight Knitting Worsted (2 ounce skein)
5 Skeins

—OR—

Minerva Sock & Sweater Yarn (4 ounce skein)
3 Skeins

Knitting Needles: 1 Pair Standard Size 5—14 inch
1 Double Point Needle Standard Size
5—(for Cable)

Gauge: 6 Sts. to 1 inch (Stockinette St.)

BACK: Cast on 88 Sts. Work in Cable Pattern St. as follows:

Row 1—* P. 1, K. 1, P. 1, K. 6, P. 1, K. 1, P. 1, K. 7, repeat from * 3 times more, P. 1, K. 1, P. 1, K. 6, P. 1, K. 1, P. 1.

Row 2—* K. 1, P. 1, K. 1, P. 6, K. 1, P. 1, K. 1, P. 7, repeat from * 3 times more, K. 1, P. 1, K. 1, P. 6, K. 1, P. 1, K. 1.

Repeat Rows 1 and 2 two times more.

Row 7—(Cable Row) * P. 1, K. 1, P. 1, slip 2 Sts. on Double Point Needle, place in back of work, K. next 2 Sts., bring Double Point Needle forward, K. next 2 Sts., then K. the 2 Sts. from Double Point Needle (Cable), P. 1, K. 1, P. 1, K. 7, repeat from * 3 times more, P. 1, K. 1, P. 1, work Cable, P. 1, K. 1, P. 1.

Row 8—Same as Row 2.

Row 9—Same as Row 1, picking up 1 St. in center of each of the 5 Cables.

Row 10—K. 1, P. 1, K. 1, * P. 7, K. 1, P. 1, K. 1, repeat from * across row.

Row 11—P. 1, K. 1, P. 1, * K. 7, P. 1, K. 1, P. 1, repeat from * across row.

Row 12—Same as Row 10.

Row 13—(Cable Row) * P. 1, K. 1, P. 1, K. 7, P. 1, K. 1, P. 1, slip 2 Sts. on Double Point Needle, place in back of work, K. next 3 Sts., bring Double Point Needle forward, K. next 2 Sts., then K. the 2 Sts. from Double Point Needle, repeat from * 3 times, P. 1, K. 1, P. 1, K. 7, P. 1, K. 1, P. 1.

Row 14—Same as Row 10.

Row 15—Same as Row 11, picking up 1 St. in center of each of the 4 Cables.

Row 16—* K. 1, P. 1, K. 1, P. 7, K. 1, P. 1, K. 1, P. 8, repeat from * 3 times, K. 1, P. 1, K. 1, P. 7, K. 1, P. 1, K. 1. Continue to work in this manner (alternating Cable rows and picking up 1 St. at center of each Cable). Work 7 rows after each of the next 3 Cable rows (working 5 Cables on Row 21, 4 Cables on Row 29, and 5 Cables on Row 37). Work 9 rows after each of the next 3 Cable rows (working 4 Cables on Row 47, 5 Cables on Row 57, 4 Cables on Row 67). Work 11 rows after last Cable row, then work 5 Cables on Row 79. On Row 81 start armhole Border as follows: Increase 1 St. in first St., continue in Pattern St. across row (picking up 1 St. in each of the 5 Cables), increase 1 St. in last St. (131 Sts. on needle). Increase 1 St. at armhole edge every 8th row 6 times more, working the added Sts. in Ribbing, at the same time work 4 Cables on Row 91. On Row 93 pick up 1 St. in center of each of the 4 Cables, on next row work the 11 Sts. of center Cable in Ribbing.

Work 4 Cables only on 103rd row, then divide Sts. for back opening. Bind off 1 St. at center, then slip Sts. of Right half of Back on St. Holder and work Left Shoulder. Work 2 Cables on 117th row and 2 Cables on 131st row.

When armhole measures 8 inches from underarm,

To Shape Shoulder: Bind off 16 Sts. at armhole edge every other row 4 times, bind off remaining Sts. for back of neck.

Work Right Shoulder to correspond.

FRONT: Work same as Back but start Ribbing at center Cable only 1 inch above 6th Cable twist and divide Sts. on 131st row. Bind off for Shoulder same as Back.

Sew shoulder seams, sew underarm seams, sew slide fastener in back opening.

"BEDSIDE COMPANION"

NUMBER 7109

"BEDSIDE COMPANION"

No. 7109

If you're ill you'll feel better . . . if you're reading you'll feel like the heroine in this glorious bed *cape!* Soft as lace . . . what a gift for a new mother . . . favorite on your Christmas list or for yourself! Ribbed yoke . . . lace stitch. In MINERVA—Featherdown . . . Fingering Yarn. Size 14 to 16.

MATERIALS REQUIRED:

Minerva Featherdown (1 ounce ball)—5 Balls

—OR—

Minerva Fingering Yarn (2 ounce skein)—4 Skeins

Knitting Needles: 1 Steel Circular Skirt Needle Standard Size 3—29 inch

Gauge: 7 Sts. to 1 inch

PATTERN STITCH: (Multiple of 24 Sts. plus 2)

Row 1—K. 1, * K. 1, Y. O., K. 1, Y. O., K. 1, Y. O., K. 1, Y. O., then K. 2 together 8 times, K. 1, Y. O., K. 1, Y. O., K. 1, Y. O., K. 1, Y. O., repeat from * across row, end K. 1.

Row 2—K.

Row 3—K. wrapping yarn two times around needle for each St.

Row 4—* K. the first loop, then let the second loop drop off the needle, repeat from * across.

Repeat the 4 rows for Pattern St.

Starting at bottom of Cape, cast on 482 Sts. (20 Patterns), K. 4 rows, then work in Pattern St. for 11 inches, ending with 4th row.

Next row decrease 6 Sts. in each Pattern as follows:

Row 1—K. 1, * (K. 1, Y. O.) 2 times, (K. 2 together) 10 times, (K. 1, Y. O.) 2 times, repeat from * across, K. 1. (362 Sts.).

Row 2—K. 1, * K. 7, (K. 2 together) 2 times, K. 7, repeat from * across, K. 1 (322 Sts.).

Rows 3 and 4—Same as Rows 3 and 4 in Pattern St.

Row 5—K. 1, * K. 1, Y. O., (K. 2 together) 7 times, K. 1, Y. O., repeat from * across, K. 2 Sts. in last St. (223 Sts.).

Then work Yoke as follows:

YOKE: Row 1—(wrong side of work) K.

Row 2—K. 1, * Y. O., K. 2 together, repeat from * across.

Row 3—K.

Row 4—K. 1, * P. 1, K. 1, repeat from * across.

Row 5—P. 1, * K. 1, P. 1, repeat from * across.

Repeat Rows 4 and 5 three times.

Row 12—Same as Row 4.

Row 13—K. 6, * K. 2 together, K. 8, repeat from * to last 9 Sts., K. 2 together, K. 7.

Row 14—Same as Row 2 of Yoke.

Row 15—K.

Repeat Rows 4 and 5 four times.

Row 24—Same as Row 4.

Row 25—K. 6, * K. 2 together, K. 7, repeat from * to last 8 Sts., K. 2 together, K. 6.

Row 26—Same as Row 2.

Row 27—* K. 6, K. 2 together, repeat from * across, ending K. 5.

Repeat Rows 4 and 5 four times.

Row 36—Same as Row 4.

Row 37—* K. 5, K. 2 together, repeat from * across, ending K. 5.

Row 38—Same as Row 2.

Row 39—K. 5, * K. 2 together, K. 4, repeat from * across.

Row 40—K.

Bind off.

Draw ribbon through each beading to tie.

"ACTION-FASHION"

SLEEVELESS SLIP-OVER—No. 7110
CARDIGAN—No. 7111



"ACTION-FASHION"**No. 7110 and 7111**

The more you gad, the more you'll be glad for the newest, smartest TWIN-SET. *Slipover* . . . V-neck—sleeveless—ribbed back—ribbing too for neck, armholes, pockets. *Cardigan* . . . V-neck—ribbed back, pockets and front edge. In MINERVA-Featherweight Knitting Worsted . . . Heather Featherweight Knitting Worsted . . . Sock & Sweater Yarn . . . Heather Sock & Sweater Yarn. Sizes 14 to 16 and 18 to 20.

SLEEVELESS SLIPOVER No. 7110**MATERIALS REQUIRED:**

Minerva Featherweight Knitting Worsted
(2 ounce skein)

—OR—

Minerva Heather Featherweight Knitting Worsted
(2 ounce skein)

Size 14 to 16
4 Skeins

Size 18 to 20
6 Skeins

—OR—

Minerva Sock & Sweater Yarn (4 ounce skein)

—OR—

Minerva Heather Sock & Sweater Yarn (4 ounce skein)

Size 14 to 16
2 Skeins

Size 18 to 20
3 Skeins

Knitting Needles: 1 Pair Standard Size 2—14 inch
1 Pair Standard Size 3—14 inch

Gauge: 7 Sts. to 1 inch (Stockinette St.—Size 3 Needles)

RIBBING PATTERN: (Multiple of 4 Sts. plus 2)

Row 1—* K. 2, P. 2, repeat from * across row ending K. 2.

Row 2—* P. 2, K. 2, repeat from * across row ending P. 2.
Repeat these 2 rows for Ribbing Pattern.

Sizes: 14 to 16 18 to 20

BACK: The entire Back is worked in Ribbing Pattern on Size 2 Needles. Cast on

138 Sts.

146 Sts.

Work in Ribbing Pattern for 14 inches.

To Shape Armholes: Bind off 8 Sts. at the beginning of each of the next 2 rows, then decrease 1 St. each side every other row as follows:

Row 1—K. 2, P. 2, for 12 Sts. (Armhole Border), K. 2 together, continue Ribbing across to last 14 Sts., slip 1, K. 1, P. S. S. O., P. 2, K. 2, to end of row.

Row 2—P. 2, K. 2, for 12 Sts., P. 1, continue Ribbing across to last 13 Sts., P. 1, K. 2, P. 2, to end of row.

Repeat these last 2 rows 7 times more.

Sts. on Needle:

106 Sts.

114 Sts.

Work even until armhole measures

7"

7½"

To Shape Shoulders: Bind off

8 Sts.

9 Sts.

at the beginning of each of the next 8 rows. Bind off remaining Sts. for back of neck.

(Continued on page 29)

CARDIGAN No. 7111**MATERIALS REQUIRED:**

Minerva Featherweight Knitting Worsted
(2 ounce skein)

—OR—

Minerva Heather Featherweight Knitting Worsted
(2 ounce skein)

Size 14 to 16
7 Skeins

Size 18 to 20
9 Skeins

—OR—

Minerva Sock & Sweater Yarn (4 ounce skein)

—OR—

Minerva Heather Sock & Sweater Yarn (4 ounce skein)

Size 14 to 16
4 Skeins

Size 18 to 20
5 Skeins

Knitting Needles: 1 Pair Standard Size 2—14 inch
1 Pair Standard Size 3—14 inch

Gauge: 7 Sts. to 1 inch (Stockinette St.—Size 3 Needles)

RIBBING PATTERN: (Multiple of 4 Sts. plus 2)

Row 1—**K. 2, P. 2, repeat from * across row ending K. 2.

Row 2— P. 2, K. 2, repeat from * across row ending P. 2.
Repeat these 2 rows for Ribbing Pattern.

Sizes: 14 to 16 18 to 20

BACK: (The entire Back is worked in Ribbing Pattern on Size 2 Needles). Cast on

138 Sts.

146 Sts.

Work in Ribbing Pattern for 14½ inches.

To Shape Armholes: Bind off 8 Sts. at the beginning of each of the next 2 rows, then bind off 2 Sts. at the beginning of every row 6 times, then decrease 1 St. each side every other row 7 times.

Sts. on Needle:

96 Sts.

104 Sts.

Work even until armholes measure

7"

7½"

(measured straight up from bound off Sts. at underarm).

To Shape Shoulders: Bind off

7 Sts.

8 Sts.

at the beginning of each of the next 8 rows. Bind off remaining Sts. for back of neck.

POCKET FACINGS: With Size 3 Needles cast on 32 Sts. Work in Stockinette St. for 1¼ inches, ending with K. row. Slip Sts. on St. Holder. Work 2.

RIGHT FRONT: With Size 2 Needles cast on

64 Sts.

68 Sts.

Work in Ribbing of K. 2, P. 2, for 1½ inches. Next row (right side of work), work in Ribbing across 12 Sts. (Front Border), K. 12 Sts., slip Sts. on St. Holder, continue in Ribbing on next 32 Sts. for 2½ inches, (slip remaining Sts. on St. Holder). Bind off Pocket Sts. in Ribbing. K. Sts. from St. Holder to end of row.

(Continued on page 30)

Antique



"SCANDINAVIAN"
NUMBER 7112

"SCANDINAVIAN"

No. 7112

Stunning with trim tailored slacks—casual fitted slipover . . . short sleeves . . . choker neck . . . yoke and sleeves in Scandinavian pattern. In MINERVA-Featherweight Knitting Worsted . . . Sock & Sweater Yarn. Sizes 14—16—18 and 20.

MATERIALS REQUIRED:

Minerva Featherweight Knitting Worsted (2 ounce skein)

	Size 14	Size 16	Size 18	Size 20
Red	5 Skeins	6 Skeins	7 Skeins	8 Skeins
White	2 Skeins	2 Skeins	3 Skeins	3 Skeins

—OR—

Minerva Sock & Sweater Yarn (4 ounce skein)

	Size 14	Size 16	Size 18	Size 20
Red	3 Skeins	3 Skeins	4 Skeins	5 Skeins
White	1 Skein	1 Skein	2 Skeins	2 Skeins

Knitting Needles: 1 Pair Standard Size 2—14 inch
1 Pair Standard Size 3—14 inch

Gauge: 7 Sts. to 1 inch (Size 3 Needles)

Sizes: 14 16 18 20

BACK: With Red and Size 2 Needles cast on
102 Sts. 110 Sts. 118 Sts. 126 Sts.

Work in Ribbing of K. 1, P. 1, for 3 inches. Change to Size 3 Needles and Stockinette St. and increase 1 St. each side, then increase 1 St. each side every 6th row 9 times more.

Sts. on Needle:
122 Sts. 130 Sts. 138 Sts. 146 Sts.

When work measures
10" 10" 11" 11"
from start, work Pattern from Chart.

To Shape Armholes: Bind off 6 Sts. at the beginning of the 7th and 8th row of Pattern, then decrease 1 St. each side every other row

9 times 9 times 10 times 11 times

When armhole measures
7½" 7½" 8" 8"
(measured straight up from bound off Sts. at underarm),

To Shape Shoulders: Bind off
8 Sts. 9 Sts. 10 Sts. 11 Sts.
at the beginning of each of the next 6 rows. Bind off remaining Sts.

FRONT: Work Front same as Back to
42 Rows 42 Rows 46 Rows 50 Rows
of Pattern.

To Shape Neck: Work over
38 Sts. 41 Sts. 41 Sts. 44 Sts.

Slip these Sts. on St. Holder. Bind off
16 Sts. 18 Sts. 24 Sts. 24 Sts.

Work Right Shoulder, binding off 2 Sts. at neck edge every other row 3 times, then decrease 1 St. at neck edge every other row
8 times 8 times 5 times 5 times

When armhole measures same as at Back,

To Shape Shoulder: Bind off
8 Sts. 9 Sts. 10 Sts. 11 Sts.

at armhole edge every other row 3 times.

Work Left Shoulder to correspond.

SLEEVES: With Red and Size 3 Needles, cast on
75 Sts. 75 Sts. 81 Sts. 81 Sts.

Work even in Stockinette St. for ¾ inch, P. 1 row on right side of work for turn of hem, P. 1 row, then work Pattern from Chart. When Sleeve measures 2½ inches from P. row, bind off 5 Sts. at the beginning of each of the next 2 rows, then decrease 1 St. each side every 4th row

7 times 7 times 10 times 10 times

then decrease 1 St. each side every other row

14 times 14 times 8 times 8 times

then 1 St. each side every row

4 times 4 times 10 times 10 times

Bind off remaining Sts.

Sew shoulder seams, leaving 1 inch open on Left Shoulder. Sew Sleeves in place. Sew underarm and sleeve seams.

NECKBAND: With Red and Size 3 Needles cast on 110 Sts. K. 1 row, P. 1 row, with White K. 1 row. With Red work 3 more rows in Stockinette St. Change to Size 2 Needles and work 4 more rows with Red, with White K. 1 row, with Red work 2 rows, K. 1 row on wrong side of work for turn of hem, work 6 rows in Stockinette St., bind off. Fold at P. row and sew hem. Sew Neckband over neck edge allowing 1 inch for overlap at Left Shoulder opening. Fasten with 2 loops and Buttons.

(Chart on page 31)



"WANDERLUST"
NUMBER 7113

"WANDERLUST"

No. 7113

Wherever you go, toward the south or toward snow, this figure flattering, fitted slipover will cover you with glamour. Stockinette stitch . . . graduated ribbed yoke with fashion's favorite fagoting stitch. In MINERVA-Featherdown . . . Sports Yarn . . . Heather Sports Yarn . . . Fingering Yarn. Sizes 14-16-18 and 20.

MATERIALS REQUIRED:

Minerva Fingering Yarn (2 ounce skein)
 Size 14 Size 16 Size 18 Size 20
 3 Skeins 4 Skeins 5 Skeins 6 Skeins

—OR—

Minerva Featherdown (1 ounce ball)
 Size 14 Size 16 Size 18 Size 20
 4 Balls 5 Balls 6 Balls 6 Balls

—OR—

Minerva Sports Yarn (2 ounce ball)

—OR—

Minerva Heather Sports Yarn (2 ounce ball)
 Size 14 Size 16 Size 18 Size 20
 3 Balls 4 Balls 5 Balls 6 Balls

Knitting Needles: 1 Pair Standard Size 2-14 inch
 1 Pair Standard Size 3-14 inch

Gauge: 8 Sts. to 1 inch (Size 3 Needles)

Sizes:	14	16	18	20
---------------	----	----	----	----

BACK: With Size 2 Needles cast on
 114 Sts. 122 Sts. 130 Sts. 138 Sts.
 and work in Ribbing of K. 1, P. 1, for 3 inches. Change to
 Size 3 Needles and Stockinette St. and increase 1 St. each
 side, then increase 1 St. each side every 8th row 7 times.

Sts. on Needle:
 130 Sts. 138 Sts. 146 Sts. 154 Sts.

When work measures
 10" 10½" 11" 11½"
 from start,

To Shape Armholes: Bind off 8 Sts. at the beginning
 of each of the next 2 rows, then decrease 1 St. each side
 every other row 5 times.

Sts. on Needle:
 104 Sts. 112 Sts. 120 Sts. 128 Sts.

Work ½ inch even, then work Fagoting row as follows:
 K. 1, * Y. O., K. 2 together, repeat from * across, ending
 Y. O., K. 2 together, K. 1. P. 1 row, then work all Sts. in
 K. 1, P. 1, Ribbing.

When armhole measures 4 inches, increase 1 St. each side,
 then increase 1 St. each side every 8th row 3 times more.

When armhole measures
 7" 7½" 8" 8½"

To Shape Shoulders: Bind off
 12 Sts. 13 Sts. 14 Sts. 15 Sts.

at the beginning of each of the next 6 rows. Work remaining
 Sts. in Ribbing of K. 1, P. 1, for ¾ inch, bind off loosely
 in Ribbing.

FRONT: Work same as Back to the Fagoting row (1½
 inches above underarm), then start Yoke as follows:

On next row * K. 2 together, Y. O., repeat from *
 22 times 24 times 26 times 28 times
 more. K. 12, * Y. O., K. 2 together, repeat from * to end of
 row, P. back.

On next row work in Ribbing of K. 1, P. 1, for
 46 Sts. 50 Sts. 54 Sts. 58 Sts.
 work the next 12 Sts. in Stockinette St., then P. 1, K. 1,
 across next
 46 Sts. 50 Sts. 54 Sts. 58 Sts.

Work 5 more rows in this manner, then work 2 Sts. more in
 Stockinette St. at each side of 12 center Sts., then every 6
 rows 6 times more, at the same time when armhole meas-
 ures 4 inches, increase 1 St. each side, then every 8th row
 3 times more.

When Yoke measures
 4" 4" 4½" 5"

To Shape Neck: Work across
 41 Sts. 45 Sts. 49 Sts. 53 Sts.
 slip remaining Sts. on St. Holder. Work Left Shoulder, bind
 off 2 Sts. at neck edge every other row 2 times, then
 decrease 1 St. at neck edge every other row
 2 times 3 times 4 times 5 times

When armhole measures same as at Back, bind off
 12 Sts. 13 Sts. 14 Sts. 15 Sts.
 every other row 3 times for Shoulder.

Leaving 28 Sts. at center on St. Holder, work Right
 Shoulder to correspond.

NECKBAND: Pick up 60 Sts. on neck edge and work in
 Ribbing of K. 1, P. 1, for ¾ inch. Bind off in Ribbing.

SLEEVES: On Size 2 Needles cast on
 94 Sts. 94 Sts. 102 Sts. 102 Sts.

Work in Ribbing of K. 1, P. 1, for 1 inch. Change to Size 3
 Needles and work Fagoting row same as Back, then work
 in Stockinette St. for 2 inches. Bind off 8 Sts. at beginning
 of each of the next 2 rows, then decrease 1 St. each side
 every other row
 22 times 24 times 26 times 28 times
 then 1 St. each side every row
 5 times 6 times 7 times 8 times

Bind off remaining Sts.

Sew shoulder seams. Sew Sleeves in place. Sew underarm
 and sleeve seams.

Antique



"DAZZLE STRIPES"

NUMBER 7114

"DAZZLE STRIPES"

No. 7114

Your perennial sport cardigan—in advanced styling. Diagonal stripes . . . ribbed waistband. In MINERVA-Featherweight Knitting Worsted . . . Heather Featherweight Knitting Worsted . . . Sock & Sweater Yarn . . . Heather Sock & Sweater Yarn. Sizes 12 to 14 and 16 to 18.

MATERIALS REQUIRED:

Minerva Featherweight Knitting Worsted
(2 ounce skein)

—OR—

Minerva Heather Featherweight Knitting Worsted
(2 ounce skein)

	Size 12 to 14	Size 16 to 18
Dark Color	4 Skeins	5 Skeins
Light Color	3 Skeins	4 Skeins

—OR—

Minerva Sock & Sweater Yarn (4 ounce skein)

—OR—

Minerva Heather Sock & Sweater Yarn (4 ounce skein)

	Size 12 to 14	Size 16 to 18
Dark Color	2 Skeins	3 Skeins
Light Color	2 Skeins	2 Skeins

Knitting Needles: 1 Pair Standard Size 4—14 inch
1 Pair Standard Size 3—14 inch

Gauge: 7 Sts. to 1 inch (Size 4 Needles)

Sizes:	12 to 14	16 to 18
--------	----------	----------

BACK: With Dark Color and Size 3 Needles cast on
98 Sts. 112 Sts.

Work in Ribbing of K. 1, P. 1, for 3½ inches, increasing
1 St. in every

8th St.	9th St.
---------	---------

across last row.

Sts. on Needle:	110 Sts.	124 Sts.
-----------------	----------	----------

Change to Size 4 Needles, join Light Color and work in
Pattern St. as follows:

Row 1—* With Dark Color K. 5, Light Color K. 2, repeat
from * across row, ending Dark Color K. 5.

Row 2—With Dark Color P. 4, * Light Color P. 2, Dark
Color P. 5, repeat from *
6 times 7 times

Light Color P. 4 (center point), Dark Color P. 5, then
repeat from * to end of row, ending with Dark Color P. 4.

Row 3—Dark Color K. 3, * Light Color K. 2, Dark Color
K. 5, repeat from *
6 times 7 times

Light Color K. 2, Dark Color K. 2, then repeat from *
across row, ending Dark Color K. 3.

Row 4—Dark Color P. 2, * Light Color P. 2, Dark Color
P. 5, repeat from *
6 times 7 times

Light Color P. 2, Dark Color P. 4, then repeat from *
across row, ending Dark Color P. 2.

Row 5—Dark Color K. 1, * Light Color K. 2, Dark Color
K. 5, repeat from *
6 times 7 times

Light Color K. 2, Dark Color K. 6, repeat from * across
row, ending Dark Color K. 1.

Row 6—* Light Color P. 2, Dark Color P. 5, repeat from *
6 times 7 times

Light Color P. 2, Dark Color P. 8, repeat from * across
row, ending Light Color P. 2.

Row 7—Light Color K. 1, * Dark Color K. 5, Light Color
K. 2, repeat from *
6 times 7 times

Dark Color K. 10, Light Color K. 2, repeat from * across
row, ending Dark Color K. 1.

Repeat the 7 rows for Pattern, starting next Row 1 on
wrong side of work as follows: * Dark Color P. 5, Light
Color P. 2, repeat from * across row, ending Dark Color
P. 5.

Work even for 1 inch, then increase 1 St. each side every
4th row 11 times.

Sts. on Needle:	132 Sts.	146 Sts.
-----------------	----------	----------

When work measures	8½"	9"
from Ribbing,		

To Shape Armholes: Bind off 8 Sts. at the beginning of
each of the next 2 rows, bind off 2 Sts. at beginning of next
8 rows, then decrease 1 St. at beginning of next

12 rows	20 rows
---------	---------

Sts. on Needle:	88 Sts.	94 Sts.
-----------------	---------	---------

When armhole measures	7"	7½"
-----------------------	----	-----

To Shape Neck: Work across
32 Sts. 35 Sts.

bind off 24 Sts. for neck, work to end of row. Bind off 4 Sts.
every other row 2 times at neck edge, at the same time

To Shape Shoulder: Bind off
8 Sts. 9 Sts.

at armhole edge every other row 3 times. Work Right
Shoulder to correspond.

LEFT FRONT: With Dark Color and Size 3 Needles
cast on

60 Sts.	66 Sts.
---------	---------

Work in Ribbing of K. 1, P. 1, for
52 Sts. 58 Sts.

K. 8 Sts. at front edge in Garter St. for Front Border.
Work even for 3½ inches, increasing
3 Sts. 4 Sts.

across Ribbing on last row. Change to Size 4 Needles and
join Light Color. Work in Pattern St. same as Right half
of Back (continuing the Front Border) and increase 1 St.
at side edge every inch 11 times. When work measures
same as Back to underarm,

To Shape Armhole: Bind off 8 Sts. at side edge, then
2 Sts. every other row 4 times, then decrease 1 St. every
other row

6 times	10 times
---------	----------

(Continued on page 31)



"COMPANIONS"

CARDIGAN—No. 7101
SLIPOVER—No. 7101-A

"COMPANIONS"**No. 7101 and 7101-A****CARDIGAN—No. 7101****MATERIALS REQUIRED:****Minerva Featherweight Knitting Worsted**
(2 ounce skein)

—OR—

Minerva Heather Featherweight Knitting Worsted
(2 ounce skein)

Size 14	Size 16	Size 18
7 Skeins	8 Skeins	9 Skeins

—OR—

Minerva Sock & Sweater Yarn (4 ounce skein)

—OR—

Minerva Heather Sock & Sweater Yarn (4 ounce skein)

Size 14	Size 16	Size 18
4 Skeins	4 Skeins	5 Skeins

Knitting Needles: 1 Pair Standard Size 3—14 inch
1 Pair Standard Size 4—14 inch
1 Double Point Needle Standard
Size 4—9 inch**Gauge:** 6 Sts. to 1 inch (Size 4 Needles)

Sizes:	14	16	18
---------------	-----------	-----------	-----------

BACK: With Size 3 Needles cast on
96 Sts. 102 Sts. 108 Sts.Work in Ribbing of K. 1, P. 1, for 1½ inches, change to
Size 4 Needles and work in Stockinette St. until Back
measures

16"	16½"	17"
-----	------	-----

from start.

To Shape Armholes: Bind off 6 Sts. at beginning of each
of the next 2 rows, then decrease 1 St. each side every
other row 6 times.When armhole measures
5½" 6" 6½"

bind off all Sts.

POCKET FACING: With Size 4 Needles cast on 16 Sts.,
work in Stockinette St. for 3 inches and place Sts. on
St. Holder.**LEFT FRONT:** With Size 3 Needles cast on
70 Sts. 73 Sts. 76 Sts.Work in Ribbing of K. 1, P. 1, for 1½ inches, change to
Size 4 Needles and work as follows:**Row 1—** K. 23 K. 26 K. 29
P. 1, K. 9, P. 4, K. 9, P. 1, K. 23**ROW 2—**P. 23, K. 1, P. 9, K. 4, P. 9, K. 1,
P. 23 P. 26 P. 29

Repeat Rows 1 and 2, 3 times more.

Row 9—(Cable Row)
K. 23 K. 26 K. 29P. 1, slip next 3 Sts. on Double Point Needle, place in back
of work, K. next 3 Sts., bring Double Point Needle forward,
K. next 3 Sts., then K. the 3 Sts. from Double Point
Needle (Cable), P. 4, repeat Cable on next 9 Sts., P. 1,
K. 23.**Row 10—**Same as Row 2.

Repeat Rows 1 and 2, 5 times.

Repeat Cable Pattern from Row 9.

(Continued on page 28)

SLIPOVER—No. 7101-A**MATERIALS REQUIRED:****Minerva Monterey** (1 ounce skein)
Size 14 Size 16 Size 18 Size 20
12 Skeins 13 Skeins 14 Skeins 16 Skeins**Knitting Needles:** 1 Pair Standard Size 1—14 inch
1 Pair Standard Size 2—14 inch**Gauge:** 8 Sts. to 1 inch (Size 2 Needles)

1 Composition Crochet Hook Standard Size 2—6 inch

—OR—

Minerva Featherdown (1 ounce ball)
Size 14 Size 16 Size 18 Size 20
6 Balls 6 Balls 7 Balls 8 Balls

—OR—

Minerva Sports Yarn (2 ounce ball)
Size 14 Size 16 Size 18 Size 20
4 Balls 4 Balls 5 Balls 6 Balls

—OR—

Minerva Fingering Yarn (2 ounce skein)
Size 14 Size 16 Size 18 Size 20
4 Skeins 4 Skeins 5 Skeins 6 Skeins**Knitting Needles:** 1 Pair Standard Size 1—14 inch
1 Pair Standard Size 3—14 inch**Gauge:** 8 Sts. to 1 inch (Size 3 Needles)

1 Composition Crochet Hook Standard Size 2—6 inch

Sizes:	14	16	18	20
---------------	-----------	-----------	-----------	-----------

BACK: On Size 1 Needles cast on
128 Sts. 136 Sts. 144 Sts. 152 Sts.Work in Ribbing of K. 1, P. 1, for 4 inches, change to Size
3 Needles (Monterey—Size 2 Needles) and work in Stocki-
nette St. until work measures

15"	15"	15½"	16"
-----	-----	------	-----

from start.

To Shape Armholes: Bind off 4 Sts. at beginning of each
of the next 2 rows, then decrease 1 St. each side every other
row 10 times.**Sts. on Needle:**
100 Sts. 108 Sts. 116 Sts. 124 Sts.When work measures
3½" 3½" 4" 4½"(measured straight from bound off Sts. at underarm),
divide Sts. for back opening.Work across
50 Sts. 54 Sts. 58 Sts. 62 Sts.

(slip remaining Sts. on St. Holder).

Work Right Shoulder even until armhole measures
6½" 7" 7½" 8"**To Shape Shoulder:** Bind off
10 Sts. 11 Sts. 12 Sts. 13 Sts.at beginning of every other row (at armhole edge) 3 times.
Slip remaining

20 Sts.	21 Sts.	22 Sts.	23 Sts.
---------	---------	---------	---------

on St. Holder.

Work Left Shoulder to correspond.

(Continued on page 28)

"STAR-SAPPHIRE"

Shown on Cover—No. 7100

Size 14 to 16

MATERIALS REQUIRED:

Minerva Featherweight Knitting Worsted (2 ounce skein)
7 Skeins

—OR—

Minerva Heather Featherweight Knitting Worsted (2 ounce skein)
7 Skeins

—OR—

Minerva Sock & Sweater Yarn (4 ounce skein)
4 Skeins

—OR—

Minerva Heather Sock & Sweater Yarn (4 ounce skein)
4 Skeins

Knitting Needles: 1 Pair Standard Size 4—14 inch
1 Pair Standard Size 2—14 inch
1 Double Point Needle Standard Size 4 (for Cable)

Gauge: 8½ Sts. to 1 inch (Pattern St.)

1 Composition Crochet Hook—Standard Size 2—6 inch

PATTERN STITCH: (Multiple of 9 Sts.)

Row 1—P.

Row 2—(right side of work) * K. 3, slip next 3 Sts. on Double Point Needle and place in front of work, K. next 3 Sts., K. 3 Sts. from Double Point Needle, repeat from * across row.

Row 3—P.

Row 4—K.

Row 5—P.

Row 6 * Slip 3 Sts. on Double Point Needle and place in back of work, K. next 3 Sts., K. 3 Sts. from Double Point Needle, K. 3, repeat from * across row.

Row 7—P.

Row 8—K.

Repeat Pattern from Row 1.

BACK: With Size 4 Needles cast on 135 Sts. Working in Pattern St., work 3 inches even. Decrease 1 St. each side, then decrease 1 St. each side every 4th row 7 times more. Next row (wrong side of work), decrease across row as follows: P. 9, P. 2 together, * P. 5, P. 2 together, repeat from * 13 times more (15 Sts. decreased across row), P. 10. 104 Sts. on Needle.

Change to Size 2 Needles and work even in Ribbing of K. 1, P. 1, for 2½ inches. Next row (wrong side of work) change to Size 4 Needles and increase 16 Sts. across row as follows: P. 6, increase 1 St. in next St., * P. 5, increase 1 St. in next St., repeat from * 14 times more. Change to Size 4 Needles and Pattern St. and work ½ inch even. Increase 1 St. each side, then increase 1 St. each side every other row 8 times, then every 4th row 5 times. 148 Sts. on Needle.

When work measures 16 inches from start,

To Shape Armholes: Bind off 4 Sts. at the beginning of each of the next 4 rows, then decrease 1 St. each side every other row 11 times. When armhole measures 4 inches (measured straight from bound off Sts. at underarm), change to Size 2 Needles and work in Ribbing of K. 1, P. 1, for 2½ inches.

To Shape Shoulders: Bind off 10 Sts. at the beginning of each of the next 8 rows, binding off 2 Sts. together each time to prevent shoulder from stretching. Bind off remaining Sts. for back of neck.

POCKET TAB: With Size 2 Needles cast on 29 Sts. Work even in Ribbing of K. 1, P. 1, as follows:

Row 1—K. 1, * P. 1, K. 1, repeat from * across row.

Row 2—P. 1, * K. 1, P. 1, repeat from * across row.

Repeat these 2 rows for Pattern, working Buttonhole 1 inch from start as follows: Work across 12 Sts., bind off 5 Sts., work across 12 Sts. On next row cast on 5 Sts. over bound off Sts. When Pocket Tab measures 2½ inches from start, place Sts. on St. Holder. Make 3 more Pocket Tabs the same.

POCKET FACING: With Size 2 Needles cast on 29 Sts. and work even in Stockinette St. for 4 inches. Place these 29 Sts. on a St. Holder. Make 3 more Pocket Facings the same.

RIGHT FRONT: With Size 4 Needles cast on 81 Sts. Work even in Pattern St. for 1¼ inches. Next row work first Buttonhole 6 Sts. from front edge, 5 Sts. wide. Work 5 more Buttonholes 3¼ inches apart. When work measures 3 inches from start, decrease 1 St. at side edge, then decrease 1 St. at side edge every 4th row 7 times more. (73 Sts. on Needle, 6½ inches from start).

Decrease 10 Sts. across next row as follows: (wrong side of work), * P. 5, P. 2 together, repeat from * 9 times more, P. 4. On next row change to Size 2 Needles and work in Ribbing of K. 1, P. 1, for 21 Sts., bind off 29 Sts. for Pocket opening, break yarn. Attach yarn at end of first 21 Rib Sts. (on right needle), then holding one Pocket Tab on top of one Pocket Facing, * work the first St. of Tab and the first St. of Facing together as 1 St., repeat from * across Tab and Facing in Ribbing, work to end of row. Work even in Ribbing for 2½ inches. On next row (wrong side of work), change to Size 4 Needles and increase 10 Sts. across row as follows: * P. 5, increase 1 St. in next St., repeat from * 9 times more, P. 3. Continuing in Pattern St., work ½ inch even.

Increase 1 St. at side edge, then increase 1 St. at side edge every other row 8 times more, then every 4th row 5 times more.

When work measures 16 inches from start,

To Shape Armhole: Bind off 4 Sts. at side edge every other row 3 times, then decrease 1 St. at side edge every other row 7 times. When armhole measures 2 inches (from bound-off Sts. at underarm), decrease 1 St. at front edge, then every 4th row 4 times more. Change to Size 2 Needles and K. 1, P. 1, Ribbing. Work across 18 Sts. in K. 1, P. 1, Ribbing, then join Pocket Tab and Pocket Facing in same manner as before, work across row.

Continue to decrease 1 St. at front edge every 4th row 2 times more, then 1 St. every row 21 times, at the same time when armhole measures 7 inches from bound-off Sts. at underarm.

To Shape Shoulder: Bind off 10 Sts. at armhole edge every other row 4 times.

Work Left Front to correspond, omitting Buttonholes.

SLEEVES: With Size 4 Needles cast on 90 Sts. Work in Pattern St. for 1 inch even. Increase 1 St. each side, then increase 1 St. each side every 4th row 5 times. 102 Sts. on Needle.

When Sleeve measures 5 inches from start, bind off 4 Sts. at the beginning of each of the next 4 rows, then decrease 1 St. each side every 4th row 7 times, then every other row 10 times, then every row 12 times. Bind off remaining Sts.

Sew shoulder seams. Sew Sleeves in place. Sew underarm and sleeve seams. Sew Pocket Facings in place.

Starting at lower edge of Right Front, work 2 rows of S. C. at front edges and around neck.

"COLONY CLUB"

No. 7102

MATERIALS REQUIRED:

Minerva Monterey (1 ounce skein)

	Size 14	Size 16	Size 18	Size 20
Blouse	12 Skeins	13 Skeins	14 Skeins	15 Skeins
Skirt	12 Skeins	14 Skeins	16 Skeins	18 Skeins

Knitting Needles: 1 Pair Standard Size 2—14 inch
1 Steel Circular Skirt Needle—
Standard Size 2—29 inch

Gauge: 8 Sts. to 1 inch

1 Composition Crochet Hook Standard Size 2—6 inch

—OR—

Minerva Fingering Yarn (2 ounce skein)

	Size 14	Size 16	Size 18	Size 20
Blouse	4 Skeins	5 Skeins	6 Skeins	7 Skeins
Skirt	4 Skeins	5 Skeins	6 Skeins	7 Skeins

—OR—

Minerva Sports Yarn (2 ounce ball)

—OR—

Minerva Heather Sports Yarn (2 ounce ball)

	Size 14	Size 16	Size 18	Size 20
Blouse	5 Balls	6 Balls	7 Balls	8 Balls
Skirt	5 Balls	6 Balls	7 Balls	8 Balls

—OR—

Minerva Featherdown (1 ounce ball)

	Size 14	Size 16	Size 18	Size 20
Blouse	7 Balls	9 Balls	11 Balls	13 Balls
Skirt	7 Balls	9 Balls	11 Balls	13 Balls

Knitting Needles: 1 Pair Standard Size 3—14 inch
1 Steel Circular Skirt Needle—
Standard Size 3—29 inch

Gauge: 8 Sts. to 1 inch

1 Composition Crochet Hook Standard Size 2—6 inch

Size:	14	16	18	20
--------------	----	----	----	----

FRONT:

RIGHT FRONT: Cast on

50 Sts. 54 Sts. 58 Sts. 62 Sts.

Working in Stockinette St. increase 1 St. at center edge every other row 8 times, at the same time decrease 1 St. at side edge every 4th row 4 times, ending on P. row. Sts. on Needle:

54 Sts. 58 Sts. 62 Sts. 66 Sts.

Slip these Sts. on St. Holder and work Left Front to correspond.

Next row K. across these

54 Sts. 58 Sts. 62 Sts. 66 Sts.

then join to Right Front.

Continue to decrease 1 St. each side every 4th row 4 times more.

Sts. on Needle:

100 Sts. 108 Sts. 116 Sts. 124 Sts.

Work 1 inch even, then increase 1 St. each side, then increase 1 St. each side every 4th row 14 times more.

Sts. on Needle:

130 Sts. 138 Sts. 146 Sts. 154 Sts.

When work measures 12 inches from start,

To Shape Armholes: Bind off 8 Sts. at the beginning of each of the next 2 rows, then decrease 1 St. each side every other row 5 times.

Sts. on Needle:

104 Sts. 112 Sts. 120 Sts. 128 Sts.

Work even for 3 inches, then increase 1 St. each side, then increase 1 St. each side every 6th row 3 times more, at the same time when Front measures 18 inches from start, work to center, slip remaining Sts. on St. Holder and work Left Shoulder.

To Shape Neck: Bind off

4 Sts. 5 Sts. 6 Sts. 7 Sts.

at neck edge every other row

5 times 1 time 1 time 1 time

then 4 Sts. every other row

.... 4 times 4 times 4 times

When armhole measures

7" 7" 7½" 7½"

(measured straight up from bound off Sts. at underarm),

To Shape Shoulder: Bind off

12 Sts. 13 Sts. 14 Sts. 15 Sts.

at side edge every other row 3 times.

Work Right Shoulder to correspond.

BACK: Cast on 116 Sts. 124 Sts. 132 Sts. 140 Sts.

Work decreases and increases at side edges same as Front.

When work measures

16" 16" 16½" 16½"

from start, divide Sts. for neck opening as follows:

K. across to center, slip these Sts. on St. Holder and work Left Back.

When armhole measures

7" 7" 7½" 7½"

from underarm,

To Shape Shoulder: Bind off

12 Sts. 13 Sts. 14 Sts. 15 Sts.

at side edge every other row 3 times. Bind off remaining Sts.

Work Right Back to correspond.

SLEEVES: Cast on

78 Sts. 78 Sts. 82 Sts. 82 Sts.

Increase 1 St. each side every 6th row 13 times. When Sleeve measures 9 inches, bind off 8 Sts. at the beginning of each of the next 2 rows, then decrease 1 St. each side every other row

24 times 24 times 28 times 28 times

then every row each side

11 times 11 times 9 times 9 times

Bind off remaining Sts:

Sew shoulder seams, sew Sleeves in place. Sew underarm and sleeve seams. Sew slide fastener in opening of Back. Work 1 row of S. C. around lower edge of Blouse.

NECKBAND: Cast on 11 Sts. Work in Moss St. for 20 inches, bind off. Work another strip the same. Fold and sew around neck edge. Tie bow at front.

SLEEVEBANDS: Cast on 7 Sts. and work in Moss St. for 27 inches. Sew to sleeve edge (starting and ending 4 inches from sleeve seam). Turn Band up on right side and sew at center (to sleeve seam). Tie bow.

SKIRT (work back and forth on Circular Needle.)

PATTERN STITCH: (Multiple of 6 Sts.)

Rows 1-2-3—* K. 3, P. 3, repeat from * across.

Rows 4-5-6—* P. 3, K. 3, repeat from * across.

Repeat the 6 rows for Pattern.

FRONT: Cast on

180 Sts. 186 Sts. 192 Sts. 198 Sts.

Work in Skirt Pattern St. even for

1" 1" 2" 3"

decrease 1 St. each side, then decrease 1 St. each side every inch

17 times 17 times 16 times 15 times

Sts. on Needle: 144 Sts. 150 Sts. 158 Sts. 166 Sts.

Decrease 1 St. each side every 4th row 19 times.

Sts. on Needle: 106 Sts. 112 Sts. 120 Sts. 128 Sts.

When Skirt measures 26 inches from start (or desired length), bind off. Work Back of Skirt the same.

Sew side seams.

Crochet casing for elastic at inside of waistline (see Page 32). Work 1 row of S. C. around bottom of Skirt on wrong side.

No. 7101 (Continued from page 25)

When Front measures
16" 16½" 17"
from start,

To Shape Armhole: Bind off 6 Sts. at side edge, then decrease 1 St. every other row 10 times (continuing Cable).

Sts. on Needle:
54 Sts. 57 Sts. 60 Sts.

When armhole measures
3" 3½" 4"
(measured straight up from bound off Sts. at underarm) bind off 24 Sts. of Cable Pattern for Pocket; on next row P. the 16 Sts. of Pocket Facing in place. Continue Front in Stockinette St. for 2 inches.

To Shape Neck: Bind off 10 Sts. at front edge, then bind off 3 Sts. at neck edge every other row 2 times, bind off remaining Sts.

Work Right Front to correspond, working 1st Buttonhole ¾ inch from start, work 2 Sts., bind off 3 Sts., work to end of row. Next row cast on 3 Sts. over bound off Sts. Work 3 inches between Buttonholes.

LEFT SLEEVE: With Size 3 Needles cast on
54 Sts. 56 Sts. 58 Sts.
work in Ribbing of K. 1, P. 1, for 3 inches. Change to Size 4 Needles and work Cable Pattern at center
K. 15 K. 16 K. 17
P. 1, K. 9, P. 4, K. 9, P. 1,
K. 15 K. 16 K. 17
Increase 1 St. each side, then increase 1 St. each side every ¾ inch
12 times 14 times 16 times
more.
Sts. on Needle:
80 Sts. 86 Sts. 92 Sts.

When Sleeve measures 18 inches from start, bind off 6 Sts. each side, then decrease 1 St. each side every other row
21 times 24 times 27 times

Continue the Cable Pattern on 26 Sts. for
4" 4½" 5"
for Shoulder. On next row, work across 13 Sts., bind off 7 Sts., then bind off 2 Sts. every other row 3 times to shape left neck edge of Front, then on remaining 13 Sts. continue 1 Cable for 4 inches across back of neck. On Double Point Needle cast on 2 Sts., then increase 2 Sts. every other row 2 times (to shape right neck edge). Cast on 7 Sts. and join the 13 Sts. to the other 13 Sts.

Continue on 26 Sts. for
4" 4½" 5"
across Right Shoulder, then work Right Sleeve from top down, increasing 1 St. each side every other row
21 times 24 times 27 times

Cast on 6 Sts. each side.
Sts. on Needle:
80 Sts. 86 Sts. 92 Sts.
then decrease each side and finish to correspond with Left Sleeve.

Sew Sleeves in place. Sew Cable-Band across Shoulders and Back. Sew underarm and sleeve seams. Face front edges with 1 inch Grosgrain Ribbon.

NECKBAND: With Size 3 Needles pick up
90 Sts. 94 Sts. 98 Sts.
Work in Ribbing of K. 1, P. 1, for ½ inch, then work Buttonhole as before. Work ½ inch. Bind off.

No. 7101-A (Continued from page 25)

FRONT: Work same as Back until armhole measures
5½" 6" 6½" 7"

To Shape Neck: K. across
39 Sts. 43 Sts. 44 Sts. 46 Sts.
slip remaining
61 Sts. 65 Sts. 72 Sts. 78 Sts.
on St. Holder. Work Left Shoulder as follows: Decrease 1 St. at neck edge every row
9 times 10 times 8 times 7 times

When armhole measures same as at Back, bind off Shoulder same as Back. Leaving center
22 Sts. 22 Sts. 28 Sts. 32 Sts.
on St. Holder, work Right Shoulder to correspond, having decreases at opposite sides.

SLEEVES: With Size 1 Needles cast on
60 Sts. 60 Sts. 66 Sts. 66 Sts.

Work in Ribbing of K. 1, P. 1, for 2½ inches, change to Size 3 Needles (Monterey—Size 2 Needles) and work in Stockinette St. even for 1 inch. Increase 1 St. each side, then increase 1 St. each side every ½ inch
3 times 8 times 7 times 12 times
then every inch
8 times 5 times 6 times 5 times

When Sleeve measures 18 inches from start (or desired length to underarm), bind off
4 Sts. 6 Sts. 6 Sts. 6 Sts.
at beginning of each of the next 2 rows, then decrease 1 St. each side every other row
29 times 29 times 30 times 31 times

Bind off remaining Sts.
Sew shoulder seams.

NECKBAND: With Size 1 Needles, K Sts. of Left Back neck edge from St. Holder, pick up and K.
9 Sts. 9 Sts. 11 Sts. 11 Sts.
at left neck edge of Front, K. across
22 Sts. 22 Sts. 28 Sts. 32 Sts.
at center of Front, pick up and K.
9 Sts. 9 Sts. 11 Sts. 11 Sts.
at right neck edge, K. across Sts. of Right Back neck edge.
Sts. on Needle:
80 Sts. 82 Sts. 94 Sts. 100 Sts.

Work in Ribbing of K. 1, P. 1, for 1 inch, bind off in Ribbing.

Work 2 rows of S. C. at back neck opening, sew slide fastener in place.

Sew Sleeves in place, sew underarm and sleeve seams.

No. 7103 (Continued from page 3)

RIGHT FRONT: K. last
 54 Sts. 58 Sts. 63 Sts. 67 Sts.
 from St. Holder, cast on
 6 Sts. 7 Sts. 6 Sts. 7 Sts.
 at front edge for overlap. Work to correspond with Left
 Front and work first Buttonhole
 3½" 3½" 3½" 2"
 from start as follows: K. 3, bind off 4 Sts., K. to end of row.
 On next row cast on 4 Sts. over the bound off Sts. Work
 4 4 4 5
 more Buttonholes 2½ inches apart.

Sew shoulder and underarm seams. Turn under 1 inch at sleeve edge for hem and sew. Join first 4 rows together at bottom of Skirt. Work 1 row of S. C. around bottom edge.

NECKBAND: Cast on
 86 Sts. 94 Sts. 102 Sts. 102 Sts.
 Work in Stockinette St. for ¾ inch, P. 1 row on right side for turn of hem, then continue in Stockinette St. for ¾ inch for facing.
 Fold and sew Neckband to neck edge, starting at center above Buttonhole (ends of Neckband meeting at center front).

VERTICAL LINES: With Crochet Hook and Green yarn work 1 row of Slip St. on P. Sts. on right side of Skirt.

BUTTONS: With Beige work a strip 2 inches wide and about 10 inches long in Stockinette St. to cover ¾ inch Button molds. With Green work 1 row of S. C. around edge of Button.

No. 7107 (Continued from page 11)

When Sleeve measures 19 inches from start, bind off 8 Sts. at the beginning of each of the next 2 rows, then decrease 1 St. each side every 6th row
 4 times 5 times 6 times 7 times
 then every other row
 10 times 10 times 12 times 12 times
 then every row each side
 14 times 14 times 15 times 15 times
 Bind off remaining Sts.

POCKET TABS: Pick up 28 Sts. 2 rows above pockets, work as follows:
Row 1—P. 8, K. 2 together, Y. O., K. 2, P. 4, K. 2 together, Y. O., K. 2, P. 8.
Row 2—K. 8, P. 2 together, Y. O., P. 2, K. 4, P. 2 together, Y. O., P. 2, K. 8.
 Repeat Rows 1 and 2 for 1 inch more, bind off.

COLLAR: Cast on
 80 Sts. 84 Sts. 88 Sts. 92 Sts.
 Work in Stockinette St. for 2 inches (half of Collar).
 K. 1 row on wrong side for turn, then work in Stockinette St. for 2 inches (Double Collar), fold and K. each St. together with 1 cast on St., then work in Ribbing of K. 1, P. 1, for 4 rows, bind off in Ribbing.

Sew shoulder seams. Sew Sleeves in place. Sew underarm and sleeve seams. Turn under and sew hems. Sew Collar to neck edge.

No. 7110 (Continued from page 17)

POCKET FACINGS: With Size 3 Needles cast on 26 Sts., work in Stockinette St. for 1¾ inches (ending with K. row), slip Sts. on St. Holder. Make 2.

FRONT: With Size 2 Needles cast on
 118 Sts. 126 Sts.
 Work in Ribbing Pattern for 1¾ inches. Next row K.
 14 Sts. 18 Sts.

Continue Ribbing Pattern on next 26 Sts. for 2¼ inches for Pocket, bind off in Ribbing. K. across next 38 Sts., then continue Ribbing Pattern on next 26 Sts. for 2¼ inches for Pocket, bind off in Ribbing. K. last
 14 Sts. 18 Sts.

Change to Size 3 Needles and P. across
 14 Sts. 18 Sts.

P. across 26 Sts. of Pocket Facing, P. across 38 Sts., P. across 26 Sts. of 2nd Pocket Facing, P. to end of row. Work in Stockinette St. until Front measures 1¼ inches less than Back to underarm, then start Armhole Border as follows:

- Row 1**—K. 2, P. 2, K. across to last 4 Sts., P. 2, K. 2.
- Row 2**—P. 2, K. 2, P. across to last 4 Sts., K. 2, P. 2.
- Row 3**—K. 2, P. 2, K. 2, P. 2, K. across to last 8 Sts., P. 2, K. 2, P. 2, K. 2.
- Row 4**—P. 2, K. 2, P. 2, K. 2, P. across to last 8 Sts., K. 2, P. 2, K. 2, P. 2.

Continue to work 4 Sts. more in Ribbing each side every other row until there are 20 Sts. in Ribbing each side.

To Shape Armholes and V Neck: Bind off 8 Sts., work Ribbing Pattern for 12 Sts., K.
 33 Sts. 37 Sts.

P. 2, K. 2, (Ribbing) for 12 Sts. (Front Border), slip remaining
 53 Sts. 57 Sts.
 on St. Holder.

Work Left Front as follows:
 Decrease 1 St. every other row 7 times at inside of Armhole Border (by K. the 13th and 14th Sts. together) and decrease 1 St. every 4th row 11 times at inside of Neck Border (by slipping the 14th St. from front edge, K. the 13th St., P. S. S. O., P. 2, K. 2, for 12 Sts.).

When armhole measures same as at Back, bind off
 9 Sts. 10 Sts.
 every other row 3 times, then bind off
 12 Sts. 13 Sts.

RIGHT FRONT: Pick up 12 Sts. in back of Left Front Border and work in Ribbing of K. 2, P. 2, then work across Sts. on St. Holder.

Next row: Bind off 8 Sts. at underarm, then work Right Front to correspond with Left Front (to decrease K. 2 together at inside of Front Border and slip 1, K. 1, P. S. S. O. at inside of Armhole Border). After binding off Shoulder Sts. continue the Front Border Sts. in Ribbing for
 3½" 4"
 to fit across back of neck.

Sew shoulder and underarm seams. Sew Pockets and Pocket Facings in place. Sew Border across back of neck and sew to Border of Left Front.

No. 7104 (Continued from page 5)

Sts. on Needle:

65 Sts. 69 Sts. 73 Sts. 77 Sts.

When front edge measures 14 inches, reverse Sts. at front edge for Revere (working 4 P. Sts. on right side of work). Work 1 more P. St. on right side of work every 4th row 17 times more (21 P. Sts.).

When armhole measures

2½" 2½" 3" 3"

on wrong side, work over

18 Sts. 20 Sts. 22 Sts. 24 Sts.

bind off 28 Sts. for Pocket opening, P. to end of row.

On next row, K. to Pocket opening, K. Sts. of Pocket Facing from St. Holder, work to end of row.

When armhole measures

3½" 4" 4½" 5"

increase 1 St. at side edge, then every inch 2 times more, at the same time when front edge measures

18½" 19" 19½" 20"

To Shape Neck: Bind off 13 Sts. at front edge, then 3 Sts. every other row 4 times, then decrease 1 St. every row

4 times 5 times 6 times 7 times

at the same time when armhole measures same as at Back,

To Shape Shoulder: Bind off

13 Sts. 14 Sts. 15 Sts. 16 Sts.

every other row 3 times.

POCKET FACING: (for right front) Cast on 32 Sts. Work in Stockinette St. for 4 inches, slip Sts. on St. Holder.

RIGHT FRONT: Work to correspond with Left Front, having decreases and increases at opposite sides. When work measures 4½ inches from start,

K. 20 Sts. K. 22 Sts. K. 24 Sts. K. 26 Sts.

bind off 32 Sts., K. to end of row. On next row P. the Pocket Facing in place. When work measures 6½ inches, work first Buttonhole, K. 3, bind off 4 Sts., K. to end of row. On next row cast on 4 Sts. over the bound off Sts., work 3 more Buttonholes 3 inches apart.

COLLAR: Cast on 90 Sts. Work in Stockinette St. for 2½ inches, bind off.

SLEEVES: Cast on

56 Sts. 60 Sts. 64 Sts. 68 Sts.

Work in Stockinette St. even for 3 inches. Increase 1 St. each side, then increase 1 St. each side every 6th row 15 times more, then every inch 3 times.

Sts. on Needle:

94 Sts. 98 Sts. 102 Sts. 106 Sts.

When Sleeve measures 18 inches (or desired length to underarm), bind off 8 Sts. at beginning of each of the next 2 rows, then decrease 1 St. each side every 6th row

3 times 4 times 5 times 6 times

then every other row 10 times, then every row each side 14 times. Bind off remaining Sts.

POCKET TABS: For Right Front, cast on 34 Sts. and work in Stockinette St. for 1 inch. Bind off. For Left Front cast on 30 Sts. and work the same. With contrasting color cast on 34 Sts., work in Moss St. (directions on Page 32) for 1½ inches. Bind off. Cast on 30 Sts. and work another piece the same.

Sew shoulder seams, sew Sleeves in place, sew underarm and sleeve seams. Turn down Revers and sew Collar to neck edge. Sew Pocket Tabs above Pockets as illustrated.

No. 7111 (Continued from page 17)

Change to Size 3 Needles. P. across to Pocket, P. Sts. of Pocket Facing from St. Holder, P. 12, work last 12 Sts. in Ribbing. Continue to work these 12 Sts. in Ribbing for Front Border and work remaining Sts. in Stockinette St. until Front measures 3½ inches from start. Next row at front edge, K. 3 Sts., bind off 4 Sts. for Buttonhole, continue across row. Next row cast on 3 Sts. over bound off Sts. Work 3 more Buttonholes at front edge 4 inches apart.

When work measures same as Back to underarm,

To Shape Armhole: Bind off 8 Sts. at side edge, then bind off 2 Sts. at the beginning of every other row 2 times, then decrease 1 St. every other row 3 times, at the same time when work measures 15½ inches from start,

To Shape Neck: Decrease 1 St. (K. the 13th and 14th St. together) at inside of Front Border, then decrease 1 St. every 6th row 8 times more.

When armhole measures

7" 7½"

To Shape Shoulder: Bind off

7 Sts. 8 Sts.

(at armhole edge) every other row 4 times, then continue the Front Border for

5½" 6"

to fit across back of neck.

Work Left Front to correspond, having decreases at opposite sides and omitting Buttonholes. Bind off Sts. of Border at Shoulder.

SLEEVES: With Size 2 Needles cast on

54 Sts. 60 Sts.

Work in Ribbing of K. 2, P. 2, for 3 inches. Change to Size 3 Needles and working in Stockinette St., increase 1 St. each side, then increase 1 St. each side every 6th row 12 times more.

Sts. on Needle:

80 Sts. 86 Sts.

When Sleeve measures 18 inches from start, bind off 6 Sts. at the beginning of each of the next 2 rows, then decrease 1 St. each side every 4th row 5 times, then decrease 1 St. each side every other row

10 times 11 times

then every row

5 times 7 times

Bind off remaining Sts.

Sew shoulder seams. Sew Border across back of neck, sew to Border of Left Front. Sew Sleeves in place. Sew underarm and sleeve seams. Sew Pockets and Pocket Facings in place. Face Front Borders with Grosgrain Ribbon.

No. 7114 (Continued from page 23)

When front edge measures
16" 17"
from start,
To Shape Neck: Bind off 20 Sts. at front edge, then 2 Sts.
every other row 4 times.

When armhole measures same as at Back,
To Shape Shoulder: Bind off
8 Sts. 9 Sts.
every other row 3 times.

Work Right Front to correspond (Pattern St. is same as
Left half of Back) working first Buttonhole in Front
Border 1 inch from start, 4 Sts. from front edge and 2 Sts.
wide (Buttonholes see Page 32). Work 2 more Buttonholes
1 inch apart, then 4 more Buttonholes about 3 1/2 inches
apart.

SLEEVES: With Dark Color and Size 3 Needles cast on
56 Sts. Work in Ribbing of K. 1, P. 1, for 3 1/2 inches,
increasing 12 Sts. across last row. Change to Size 4 Needles,
join Light Color and work in Pattern St. same as Back
(5th Pattern forms point at center of Sleeve).
Increase 1 St. each side every

2" 1"
6 times 10 times

Sts. on Needle: 80 Sts. 88 Sts.

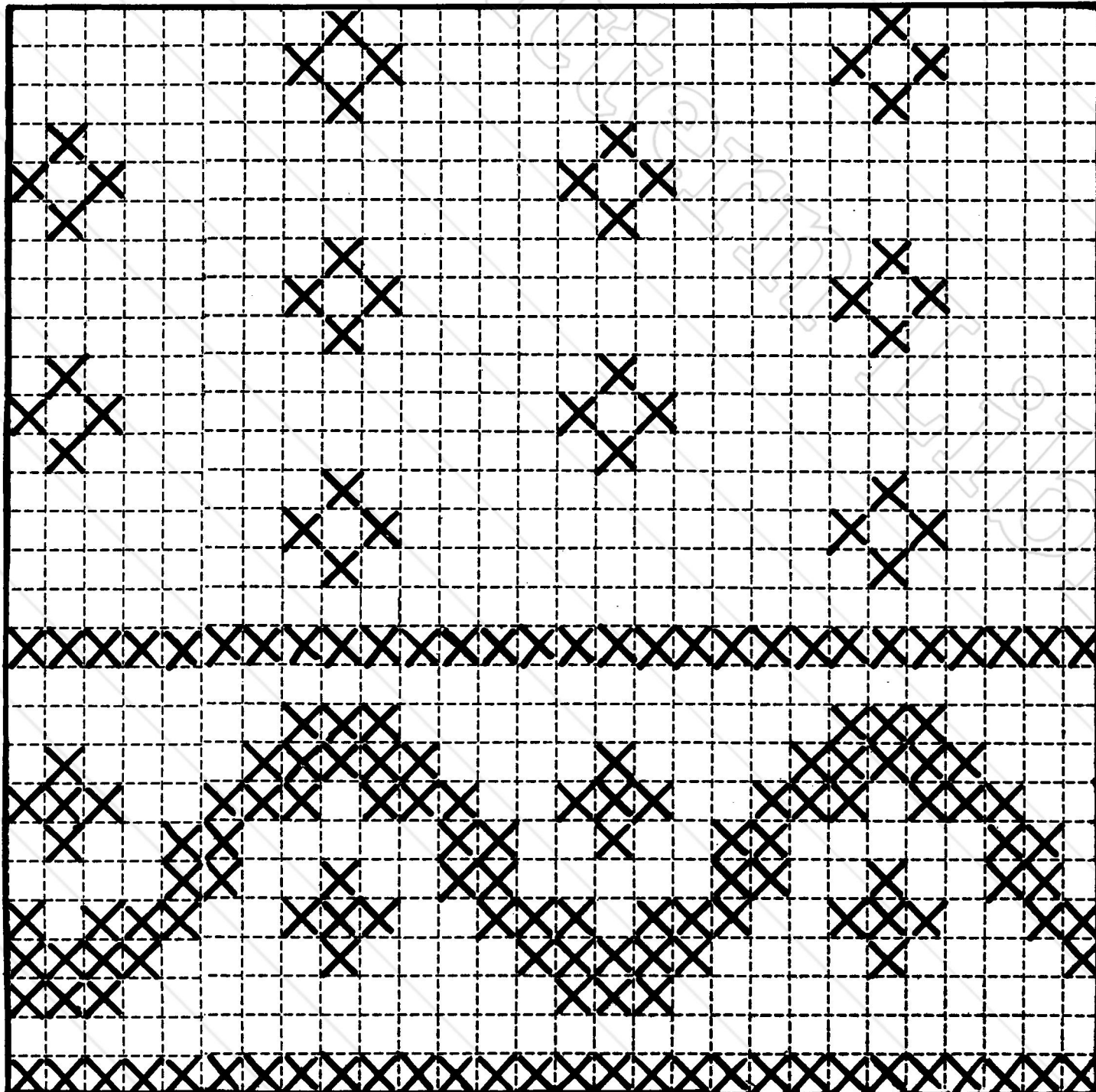
When Sleeve measures
18" 19"
from start (or desired length to underarm), bind off 4 Sts.
at beginning of each of the next 2 rows. Decrease 1 St.
each side every other row

17 times 19 times
then decrease 1 St. each side every row
6 times 5 times
bind off remaining
26 Sts. 32 Sts.

NECKBAND: With Dark Color and Size 3 Needles cast on
120 Sts. 126 Sts.

Work in Ribbing of K. 1, P. 1, for 1 inch, P. 1 row on
right side for turn of hem, then continue in Ribbing for
3/4 inch, bind off.

Sew shoulder seams, sew Sleeves in place, sew underarm
and sleeve seams. Sew Neckband around neck (having
the 1 inch width on right side). Fasten Neckband with
snap fasteners.



X = White □ = Scarlet

General Instructions

ABBREVIATIONS USED IN KNITTING AND CROCHET INSTRUCTIONS

K.—Knit	Tr. C.—Treble Crochet
P.—Purl	St.—Stitch
Ch.—Chain	Y. O.—Yarn Over
S. C.—Single Crochet	Slip St.—Slip Stitch
D. C.—Double Crochet	H. D. C.—Half Double Crochet

ASTERISKS (*-*): Star symbols indicate that work between them is to be repeated. When instructions call for repeating a given number of times, it is understood that this is in addition to the original. Thus, repeat 5 times more means 6 times in all.

GARTER STITCH: (Plain Knitting) K. every row.

RIB: 2 rows of Garter Stitch.

STOCKINETTE STITCH: K. 1 row, P. 1 row alternately. On Circular or Sock Needles knit continuously.

MOSS STITCH: K. 1 St., P. 1 St., on uneven number of Sts. On even number of Sts., K. 1 St., P. 1 St., across row; next row, P. 1 St., K. 1 St., across row.

TO INCREASE: K. 2 Sts. in 1 Stitch (Knitting 1 St. in the front and 1 St. in the back of same St.).

TO DECREASE: K. 2 Sts. together.

TO WORK EVEN: Work without increasing or decreasing.

BUTTONHOLES: Bind off the given number of stitches, this same number of stitches to be cast on on the next row directly over the bound off stitches. Work around buttonholes in Buttonhole Stitch.

For Crocheted Buttonholes—Chain the desired number of stitches, skip the same number of stitches on previous row and on next row, work over the chain stitches.

FINISHING A NEW GARMENT

BLOCKING: Using rust-proof pins, pin each piece, wrong side out, on a pressing board in exactly the line you wish to retain. Use a damp cloth and moderately hot iron, press lightly, allowing the steam to go through the garment. Lay it on a flat surface until thoroughly dry.

JOINING: Sew pieces together, being careful that the edges meet evenly. Be careful to match rows wherever possible.

BEADING: Fasten yarn, chain 5, * skip 2 stitches, 1 double crochet in next stitch, chain 2, repeat from * around edge of garment.

CASING FOR ELASTIC (inside at waistline): Fasten yarn, * chain 5, skip 2 stitches, 1 slip stitch in stitch $\frac{1}{2}$ inch below next stitch, chain 5, skip 2 stitches, 1 slip stitch in next stitch $\frac{1}{2}$ inch above, repeat from *.

WASHING: Make suds in lukewarm water using mild alkali free flakes such as *Ivory Soap Flakes*. For superior washing results, the addition of a good water normalizer, such as Calgon, to your soap and water is recommended. Likewise, for improved rinsing results, the addition of Calgon or some other good water normalizer is beneficial. Squeeze suds through fabric. Do not rub. Handle gently, do not lift out of water, as the weight of the wet garment will stretch it. Keep garment supported by the hands when squeezing out water. Rinse thoroughly three times in lukewarm normalized water. Squeeze out as much water as possible, do not twist or wring, and roll in dry turkish towels to absorb excess moisture. Shape garment according to measurements and lay it on a turkish towel on a flat surface until thoroughly dry. Ribbing should be eased in so that it will fit as snugly as when new. Never dry in sun or excessive heat.

This Is Important

DYE LOTS: Be sure to buy sufficient yarn at one time to complete your garment, making certain that each ball or skein has an identical set of dye lot letters, this is printed on the Band around the yarn, and is beside the color number.

GAUGE: Each MINERVA Instruction gives a Gauge or Scale of the number of stitches to the inch when using the yarn and needles called for. If you work tighter than the average, change to larger needles; if you work looser, change to smaller needles, to acquire the same number of stitches to the inch called for in the instructions.

STANDARD BODY MEASUREMENTS

Sizes	—14	—16	—18	—20
Bust	—32"	—34"	—36"	—38"
Waist	—26 $\frac{1}{2}$ "	—28"	—30"	—32"
Hips	—35"	—37"	—39"	—41"

For
"FASHIONS OF DISTINCTION"
Use
MINERVA KNITTING BOOKS

VOLUME No. 70... MINERVA MEN'S BOOK

A complete assortment of Sweaters and Accessories for men, including our Arrowhead Indian Sweater "THE CHIEF." Sizes in this book include 36, 38, 40, 42, and 44.

VOLUME No. 69... MINERVA TEEN-AGE TOGS

Sweaters for Girls and Boys... Cardigans, Slipovers and Sleeveless Sweaters. Sizes in this book include... 10, 12, 14, 16 and 18.

VOLUME No. 68... MINERVA HAND KNITS

High Style and Service Sweaters, Hats, Purses and other Accessories, including the LACONIA Norwegian Ski Set.

VOLUME No. 67... MINERVA BABY BOOK

Infants and Children to size 4. The SUSIE Knitted Washable Doll.

VOLUME No. 66... MINERVA AFGHAN BOOK

A collection of ten Colonial favorites of past generations—each one an heirloom piece. The MT. VERNON, PINWHEEL and LOG CABIN are three of the most popular afghans.

VOLUME No. 65... MINERVA LADIES STAPLE SWEATERS

Basic Sweaters, with instructions for each sweater written in four sizes—14, 16, 18 and 20, and in two of the interchangeable yarn groups.



JAMES LEES & SONS COMPANY

Bridgeport, Penna.

NEW YORK OFFICE: 295 Fifth Avenue
New York 16, N. Y.

CHICAGO OFFICE: 222 N. Bank Drive
Chicago 54, Ill.

LOS ANGELES OFFICE: 722 S. Los Angeles St.
Los Angeles 14, Calif.