

CLARK'S **O.N.T.** DESIGNS
FOR
GIFTS



BOOK No. 10

DESIGNED BY
FRANCES A. HARRIS



Copyright, 1920
by the Clark Thread Company
Newark, N. J.

CLARK'S **ONT** DESIGNS FOR GIFTS

Book No. 10

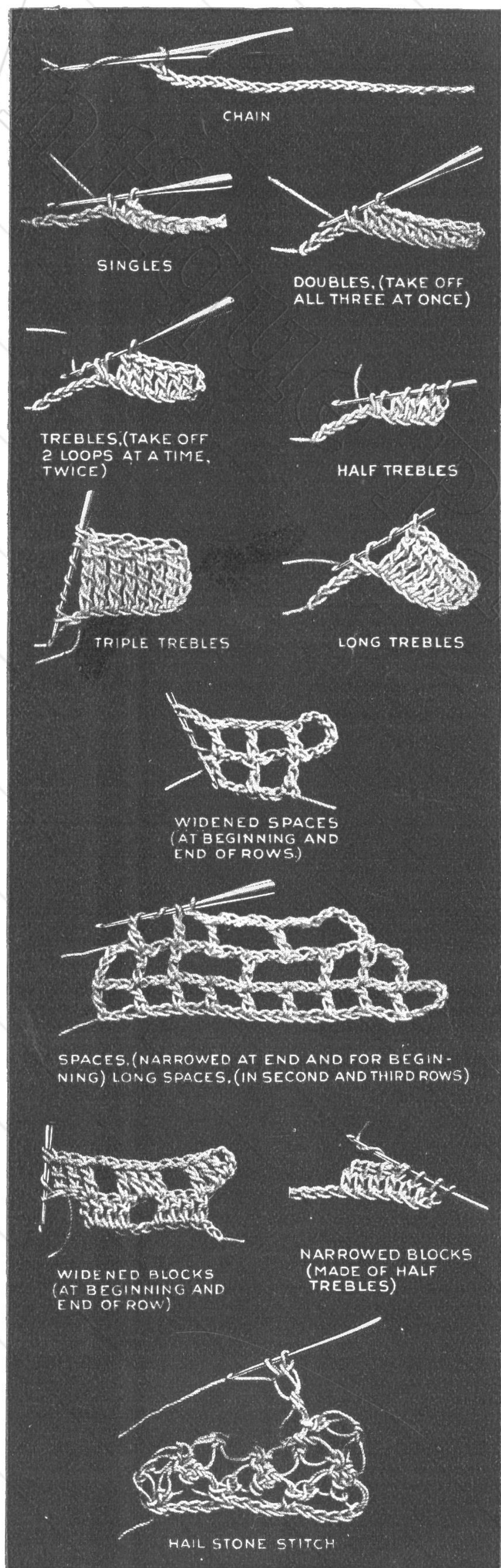
THERE is a charm about the hand made gift that is especially appealing to the recipient. The hours of loving thought woven into the dainty article add a value far above price.

In this book are many suggestions for dainty gifts that will be particularly pleasing if worked with Clark's O. N. T. Mercerized Crochet, as its lustre, smoothness and reliability are a guarantee to the work of attractiveness and durability.

TABLE OF CONTENTS

Alphabets	21	Moss Rose Designs.....	18
Butterfly Cap.....	12	Collar	19
Pattern	14	Laces	19
Yoke	12	Motor Veil.....	11
Cleopatra Bedspread.....	15	Pattern	10
Pattern	15	Night Gown Case.....	11
Pillow Scarf.....	15	Pattern	10
Cosmos Bedspread.....	7	Puff Ball.....	20
Designs	6	Rosalie Cap.....	13
Pillow	7	Pattern	14
Egg Cozy.....	16	Yoke	13
Pattern	16	Rosebud Pattern.....	14
Fichu	11	Yoke	Cover
Pattern	19	Tea Cozy.....	16
Gentleman's Scarf.....	10	Vanity Case.....	20
Luncheon Set.....	17	Venetian Dresser Scarf.....	8
Maid O' the Mist Bag.....	20	Scarf	9
Monograms	21		
Instruction Pages.....	4, 5		
Clark's O. N. T. Cottons.....	22		
Clark's O. N. T. Library.....	22		

INSTRUCTION PAGE



- St** Stitch.
- Ch** Chain.
- Sk** Skip, pass by.
- S st** Single Stitch. Draw a loop through stitch or chain directed (2 loops on needle), draw thread through both.
- Dc** Double Crochet. Used most frequently in daisy petals or similar shapes. Thread over needle, draw loop through stitch directed (3 loops on needle), draw thread through all three at once.
- Tr** Treble. Thread over needle, draw loop through stitch directed (3 on needle), draw off two loops at a time, twice.
- H tr** Half Treble. Make as above, leaving the last two loops on the needle, to be taken off later, as directed. When taken off, the two loops are regarded as one. Used most frequently in narrowing blocks and turning corners.
- D tr** Double Treble. Thread over twice, thread through stitch (4 on needle), draw off two at a time, three times.
- Tr tr** Triple Treble. Thread over three times, draw off two at a time, four times.
- Lg tr** Long Treble. Made like tr tr, with the thread over a given number of times, and loops taken off two at a time.
- *** Star. Repeat directions that follow this sign as directed.
- Wd** Widen. Wd sp = widen space. wd bl = widen block.
- N** Narrow. N sp = narrow space; n bl = narrow block.
- Mesh** Mesh. Either a space or a block; a given number of squares in filet crochet. Usually used in counting.
- Sp** Space. With 1 tr made, ch 2, sk 2, tr in next st.
- Lg sp** Long Space. As its name implies, this is a long space. Having a tr made, ch 5, sk 5, tr in next st. In the next row, work the tr in the third of 5 ch below.
- Wd sp** Widened Space. Ch 2, tr tr in base of last tr when widening at the end of a row. At the beginning of a row, ch 3 for each added space, plus 4 for the turn. Turn, skip 7 ch, tr in next. If more than one sp is added, work the rest as regular sp.
- N sp** Narrowed Space. Make last preceding st a h tr, then sk 2, tr tr in next st. Working this way at the end of a row leaves the needle in position for the next row to be narrowed without slip stitching back.
- Bl** Block. 4 tr in 4 adjoining stitches. For two or more adjoining bl, count 3 tr for each bl and add one for the last bl, as there is always one tr in common between each two adjoining bl. Thus, for 3 bl, count $3 \times 3 + 1 = 10$ tr; for 4 bl, count $3 \times 4 + 1 = 13$ tr; etc.
- Wd bl** Widen Block. After the final tr, make a d tr in same st, * then make a d tr in first two loops of preceding d tr, repeat once. Add three more d tr for each additional bl.
- N bl** Narrow Block. Make final preceding st a h tr, make three more h tr, then draw off, first one loop, then two loops twice, then last 3 loops.
- H bl** Half Block. Another name for the narrowed block. So called because it is made with h tr.
- H s st** Hail Stone Stitch. This is usually worked in pairs; that is, one stitch, then repeat, and join to proper stitch in previous row. * Draw out the loop on the needle to a length equal to three chain, then work a s st over the single (left hand) thread of the three in long loop. Repeat from * for the second h st of the pair. If the joining is to a previous row made in hail stone stitch, draw a loop through the two threads each side of the s st between 2 long loops of previous row, then draw off all 3 loops. Otherwise make a s st in the designated stitch.

TURNING, OR MITERING, CORNERS

The first, or narrowing half, of any corner is very simple, being merely a process of dropping off one mesh at the inner end of every row. This means that the last mesh of a row must be a narrowing sp (or bl), worked over the next to the last mesh of preceding row. (See page 4, also detail at right).

When the point of the corner is reached, some planning is necessary to have the direction of rows correct for the widening and narrowing of the pattern; or, to have the rows worked in the same direction as they were before the corner was started. Decide whether the first row of second half should be worked inward or outward, and then, either—

(a) Work inside mesh and widen to complete row, or

(b) Ch for widening, turn and complete row, working inward. From here on, each inward row is joined to the corresponding row of first half, by a slip stitch, allowing the treble or ch of first half to count as the final stitch of row of second half (see detail).

Each outward row is begun without turning. Ch 3 (for tr). If the first (widening, or corner) mesh is a sp, work a tr in opposite corner of first half; then turn, ready to complete row. If the first mesh is a bl, work two h tr on the tr (or ch) below, of first half, draw thread through opposite corner of first half and then complete half block, turn, and complete row.

This is all there is to turning a corner! Often thought so difficult!

JOINING CROCHET

Invisible Joining of crochet is here explained in a logical and simple method. Instead of making a chain for the foundation of beginning row, work over an extra heavy, or doubled, thread, drawing the working thread around it. Work the design up to the last row, which is made in the process of joining. The first and last rows (before the joining) must be worked in the same direction, so that the last, or joining, row will be in the opposite direction between them. Hold the beginning of the work between the first and second fingers; the end of the work between the thumb and first finger. There are four combinations for joining:

(a) **Space to Space**—Having a loop on the needle (at the beginning of row, ch 3 for tr), * remove the needle, insert from left to right in the two loops of proper st on the extra thread (drawing out the extra thread at the same time), pick up dropped loop, ch 1 through all 3 loops, * ch 2, tr in tr of last row, repeat between * and *.

(b) **Space to Block**—Work between * * of (a), repeat twice for the two tr of block, tr in tr of last row, repeat between * and *.

(c) **Block to Space**—Work as in (a), except that two tr are made in last row instead of 2 ch.

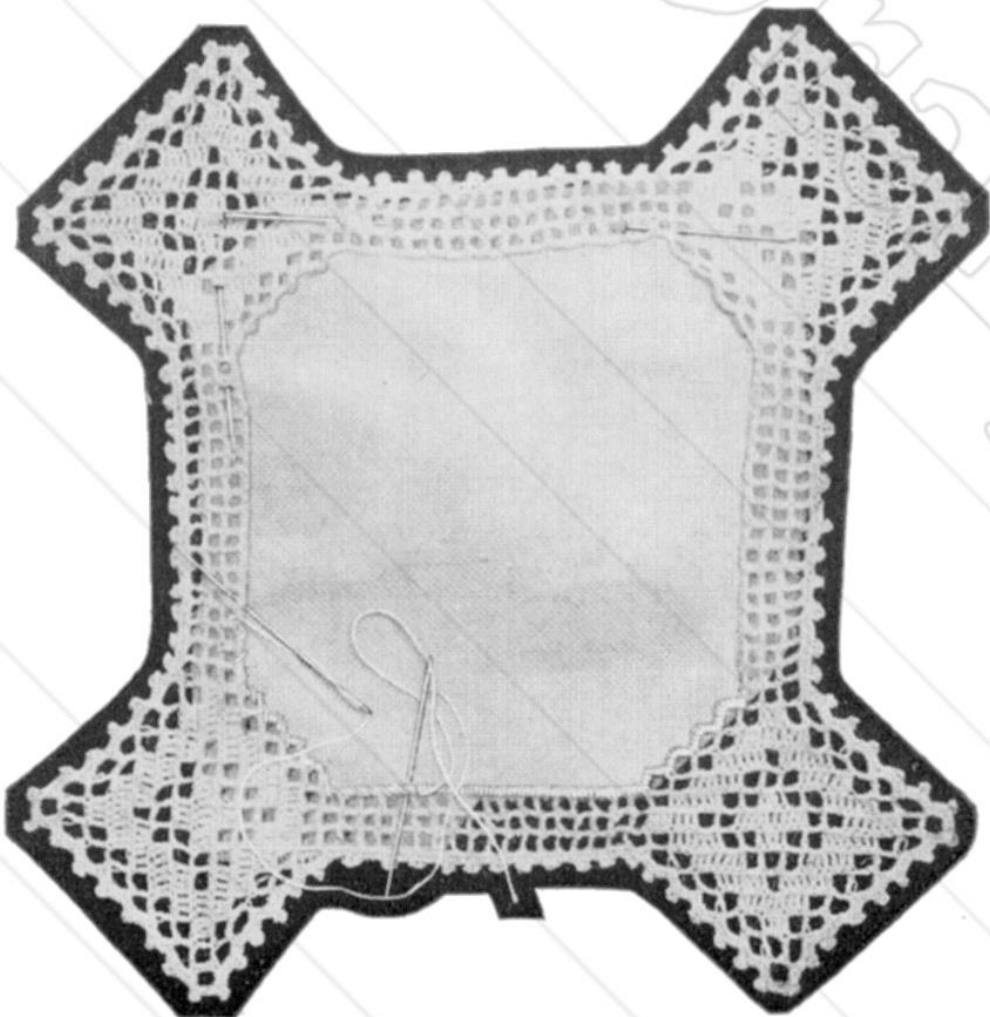
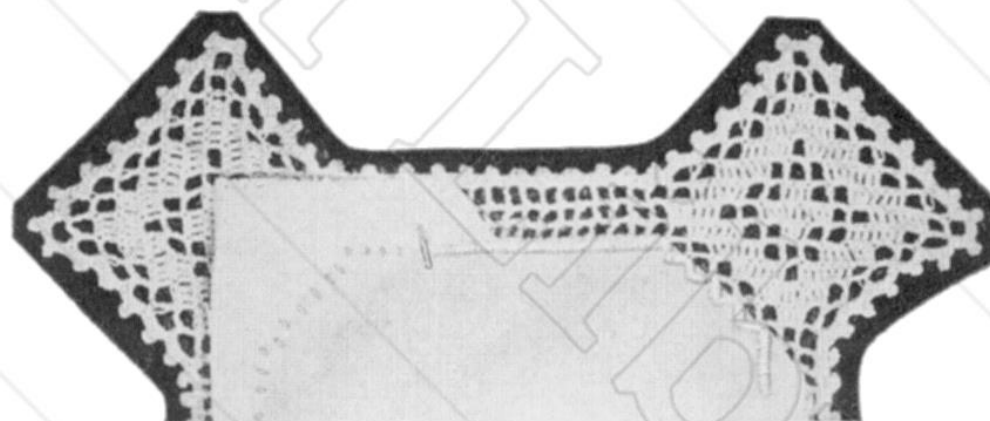
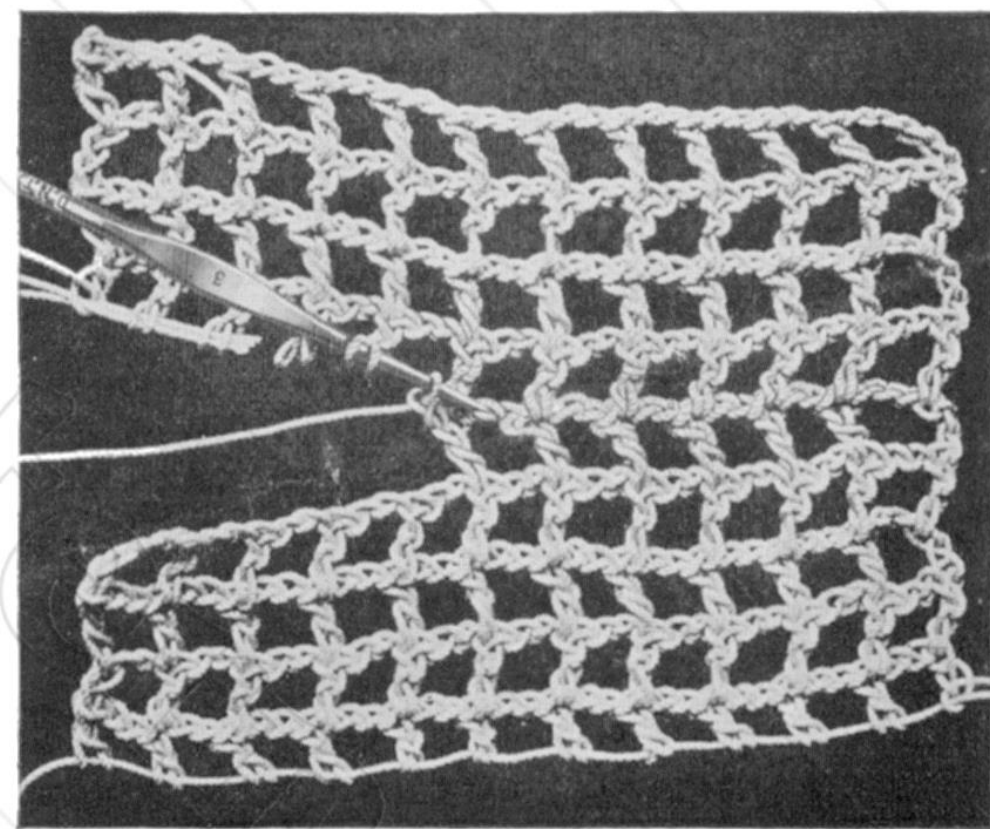
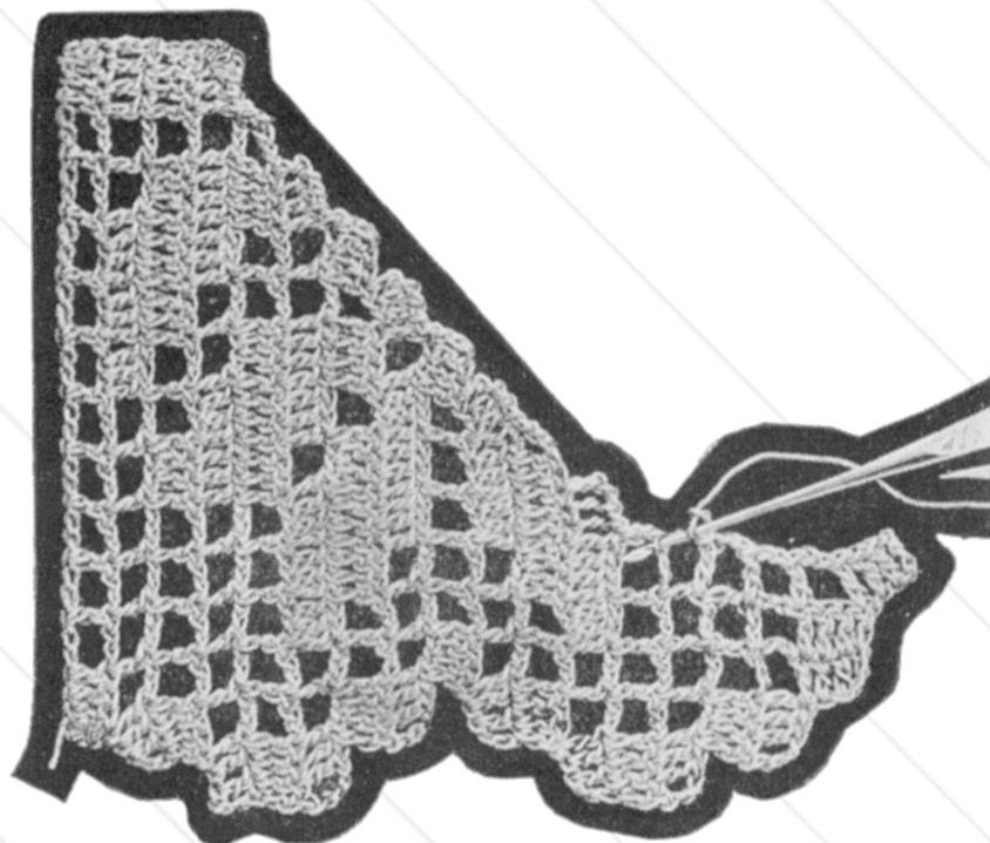
(d) **Block to Block**—Make and join as in (a) four tr in four adjoining stitches.

TO WHIP CROCHET TO MATERIAL

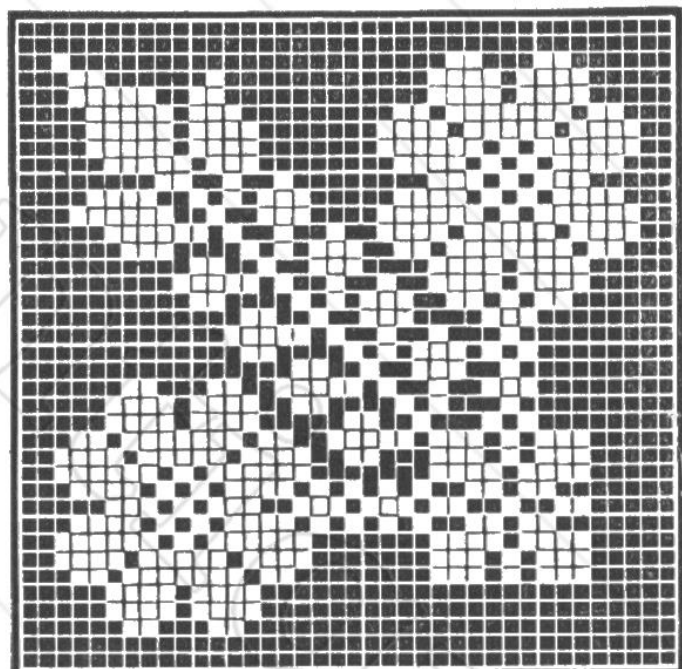
There are many ways to do this, but the writer believes the neatest and quickest as well as the strongest method is as follows:

Lay the crochet on the material in its proper position. Be sure that all measurements are correct, opposite sides are equal and the threads of the material are running parallel to the rows of crochet, pinning carefully until perfectly right. Then baste to place very carefully, bringing each mesh to a right angle, straight on the cloth. Next with Clark's O. N. T. Coton a Broder, or two threads of Clark's O. N. T. 4-Strand Cotton, whip to the material. Three to five stitches should be taken over each mesh, taking up each time the edge stitch of the crochet and an equal measure of the cloth beneath.

After whipping is finished, cut away the material from under the crochet. If reasonable care has been taken in the sewing there will be no danger of the material fraying. On stockings, or similarly woven goods, be sure to catch the loop of each stitch to prevent "running."



THE COSMOS DESIGN



SMALL SQUARE

Begun at lower right corner, worked on two sides and one corner

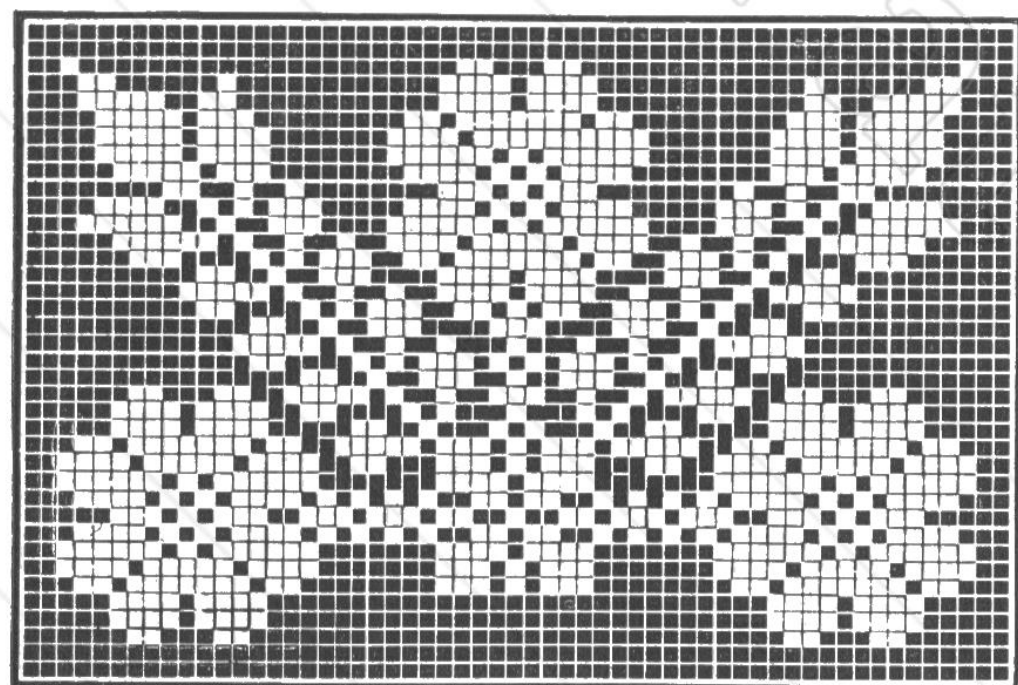
A distinct novelty is shown in this design; the work is true filet, but it is made in rounds, widened at the corners with a filet mesh, worked on the side of the treble just completed at end of previous side. For a space, ch 5, tr in base of previous tr. For a block, ch 3, 2 tr on side and 1 tr in base of previous tr. Each side is completed, at the corner, by working over the first three ch of widening mesh of previous row. The detail is very clear and no trouble should be found if it is followed in connection with the directions.

Each round consists of 2, 3, or 4 sides, according to the design. The large square, showing 4 complete repeats of the design, has four sides and four corners. The oblong, showing practically half of the large design, has three sides and two corners. The small square, showing one-quarter of the complete design, has two sides and one corner.

The large square is begun with the center mesh. The oblong is begun with a short row, extending from the long side through the central mesh of the complete design. In this way the last row will work out exactly even. The small square is begun at the lower right-hand corner.

This method of working is very necessary where the background has lacet, long spaces, hailstone, or other fancy stitches. It also insures a perfect square and gives a quaint charm to the finished article, owing to the change in direction of lines. The widening, when well done, is practically imperceptible.

The Large Square is begun in the center, with a ch of 5. Skip 2 ch and work tr in each of remaining 3 ch for 1 block. Row 2—Sp (ch 5, tr in same st as last tr), cor bl (ch 3, 2 tr on side of tr, and tr in same st as tr), 1 sp, cor bl, 1 sp, cor bl, 1 sp, 1 bl.

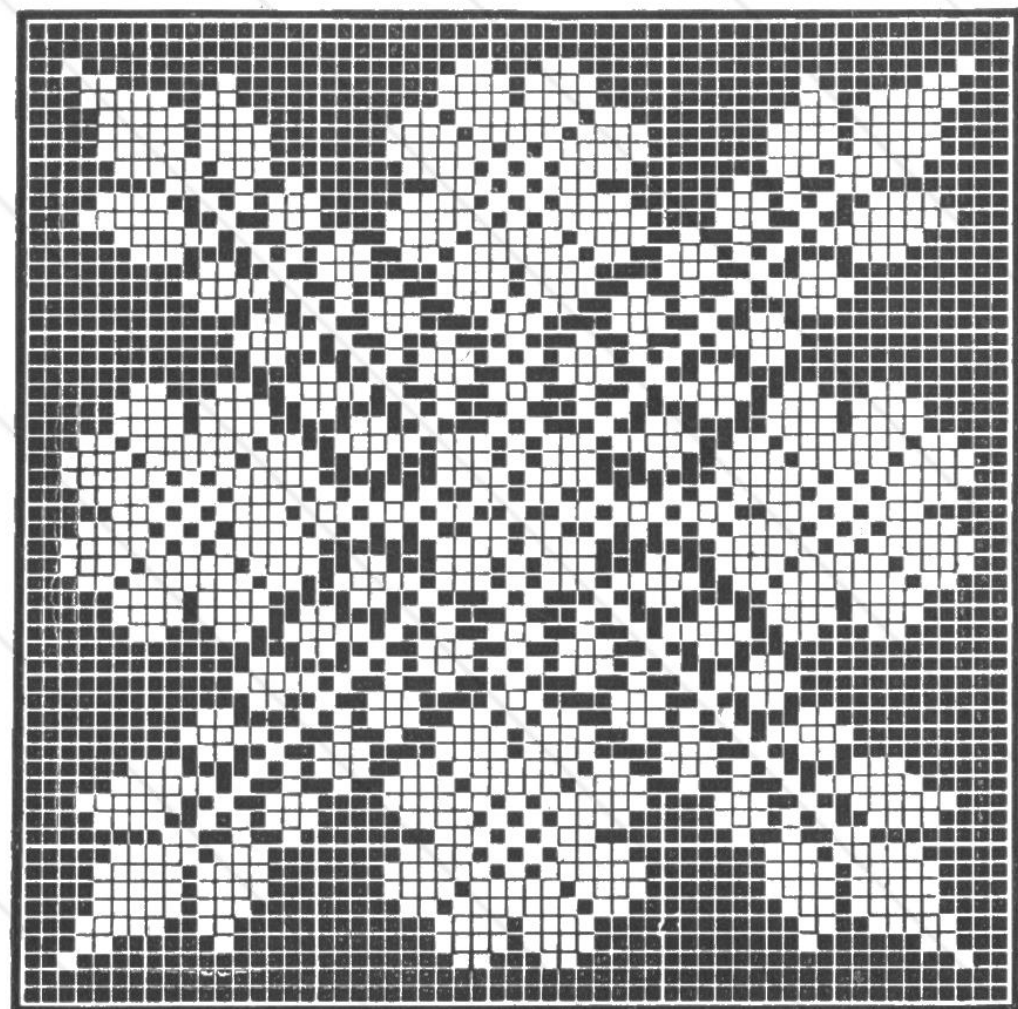


**A
OBLONG**

Begun with row of 10 mesh in lower center, worked on three sides and two corners

LARGE SQUARE

Begun at center mesh, worked on four sides and four corners



Row 3—Cor bl, 1 sp, 1 bl, cor bl, 1 bl, 1 sp, 1 bl, cor bl, 1 bl, 1 sp, 1 bl, cor bl, 1 bl, 1 sp, 2 bl.

Row 4—Cor bl, 1 sp, 1 bl, 1 sp, 1 bl, cor bl, 1 bl, 1 sp, 1 bl, 1 sp, 1 bl, 1 sp, cor bl, 1 bl, 1 sp, 1 bl, 1 sp, 1 bl, cor bl, 1 bl, 1 sp, 1 bl, 1 sp, 2 bl.

Row 5—Cor bl, 1 bl, 1 sp, 1 bl, 1 sp, 2 bl, cor bl, 2 bl, 1 sp, 1 bl, 1 sp, 2 bl, cor bl, 2 bl, 1 sp, 1 bl, 1 sp, 2 bl, cor bl, 2 bl, 1 sp, 1 bl, 1 sp, 3 bl.

Row 6—Cor sp, lg sp, 1 bl, 1 sp, 1 bl, lg sp, 1 sp, * cor bl, 1 sp, lg sp, 1 bl, 1 sp, 1 bl, lg sp, 1 sp, repeat twice, 1 bl.

Row 7—Cor sp, 1 bl, 1 sp, lg sp, 1 bl, lg sp, 1 sp, 1 bl, 1 sp, * cor bl, 1 sp, 1 bl, 1 sp, lg sp, 1 bl, lg sp, 1 sp, 1 bl, 1 sp, repeat twice, 1 bl.

Row 8—Lg sp (ch 8, skip bl and sp), bl over bl, lg sp, 3 bl, lg sp, 1 bl, lg sp, cor bl, continue, following pattern.

Begin the Oblong with a ch of 33.

Row 1—Skip 3 ch, tr in each of next three ch (1 bl), 2 sp, 2 bl, 5 sp. The first bl is the central mesh of the design. The last sp is at A on the pattern (at left).

Row 2—Ch 5, turn, 7 sp, 2 bl, 1 sp, cor bl, 1 sp, cor bl, 1 sp, 2 bl, 7 sp. (This row has been worked around the first row.) Ch 5, turn; this is the end for every row.

Row 3—5 sp, 4 bl, 1 sp, 1 bl, cor bl, 1 bl, 1 sp, 1 bl, cor bl, 1 bl, 1 sp, 4 bl, 5 sp.

Row 4—5 sp, 3 bl, 1 sp, 1 bl, 1 sp, 1 bl, cor bl, 1 bl, 1 sp, 1 bl, 1 sp, 1 bl, 1 sp, 1 bl, cor bl, 1 bl, 1 sp, 1 bl, 1 sp, 3 bl, 5 sp. Continue, following pattern, turning the corners as detailed for large square.

Begin the Small Square with a chain of 7.

Row 1—Tr in first ch (1 sp). Ch 5, turn.

Row 2—Tr in 3rd ch below (1 sp), ch 5, tr in same st as last tr (cor sp), 1 sp, ch 5, turn. Every row ends with ch 5, turn.

Row 3—2 sp, cor sp, 2 sp.

Row 4—3 sp, cor sp, 3 sp.

Row 5—4 sp, cor sp, 4 sp.

Row 6—5 sp, cor bl, 5 sp.

Row 7—5 sp, 1 bl, cor bl, 1 bl, 5 sp.

Row 8—5 sp, 2 bl, cor bl, 2 bl, 5 sp.

Row 9—7 sp, 1 bl, cor bl, 1 bl, 7 sp.

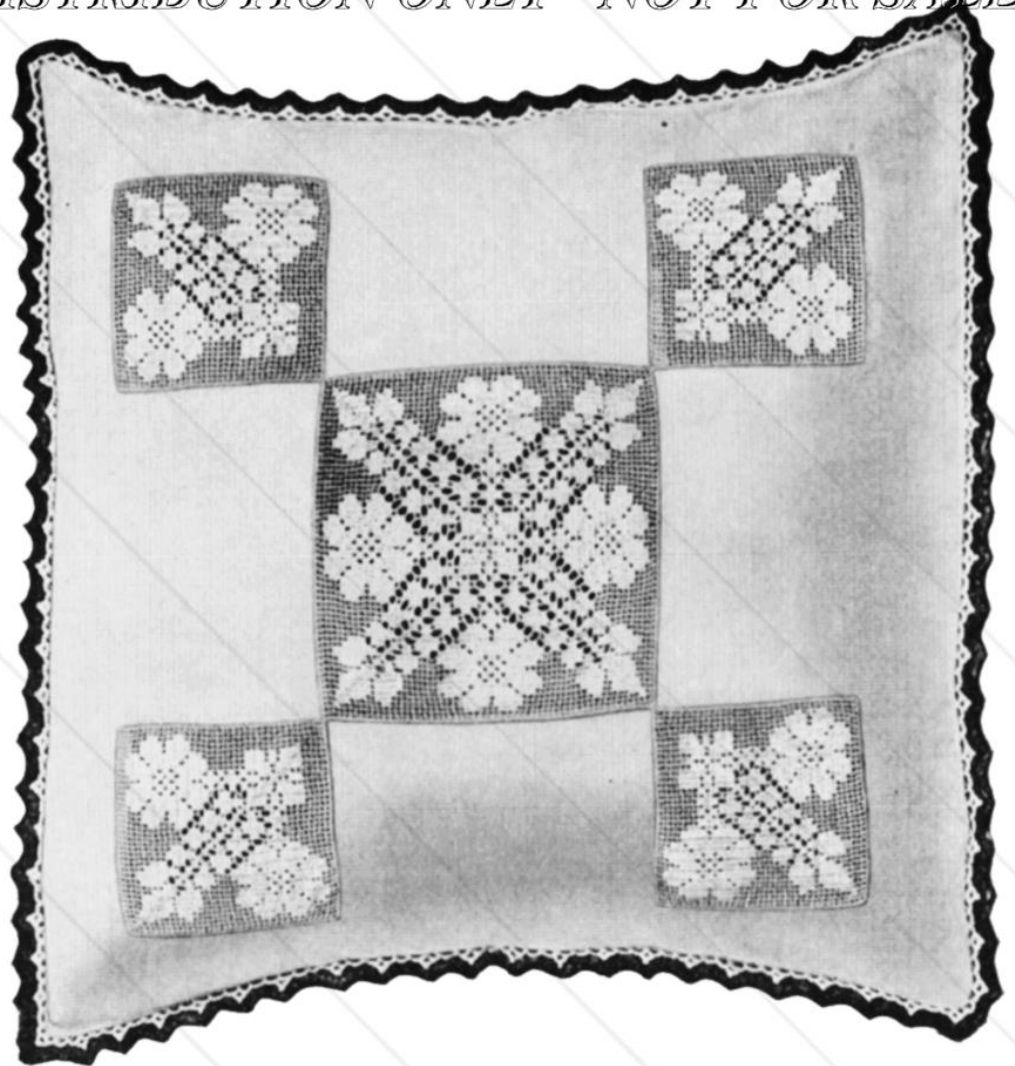
Row 10—5 sp, 2 bl, 2 sp, cor bl (this is the center bl of the design), 2 sp, 2 bl, 5 sp. Continue, following pattern, turning the corner as directed for large square.

The bedspread shown on the opposite page is worked with Clark's O. N. T. Crochet Twist, using one of the large squares and four of the small ones. The pillow is worked with Clark's O. N. T. Mercerized Crochet, white, size 100.

PILLOW, COSMOS DESIGN

A very dainty boudoir pillow is illustrated, worked in Clark's O. N. T. Mercerized Crochet, white, size 100, with Clark's O. N. T. Crochet Needle No. 14.

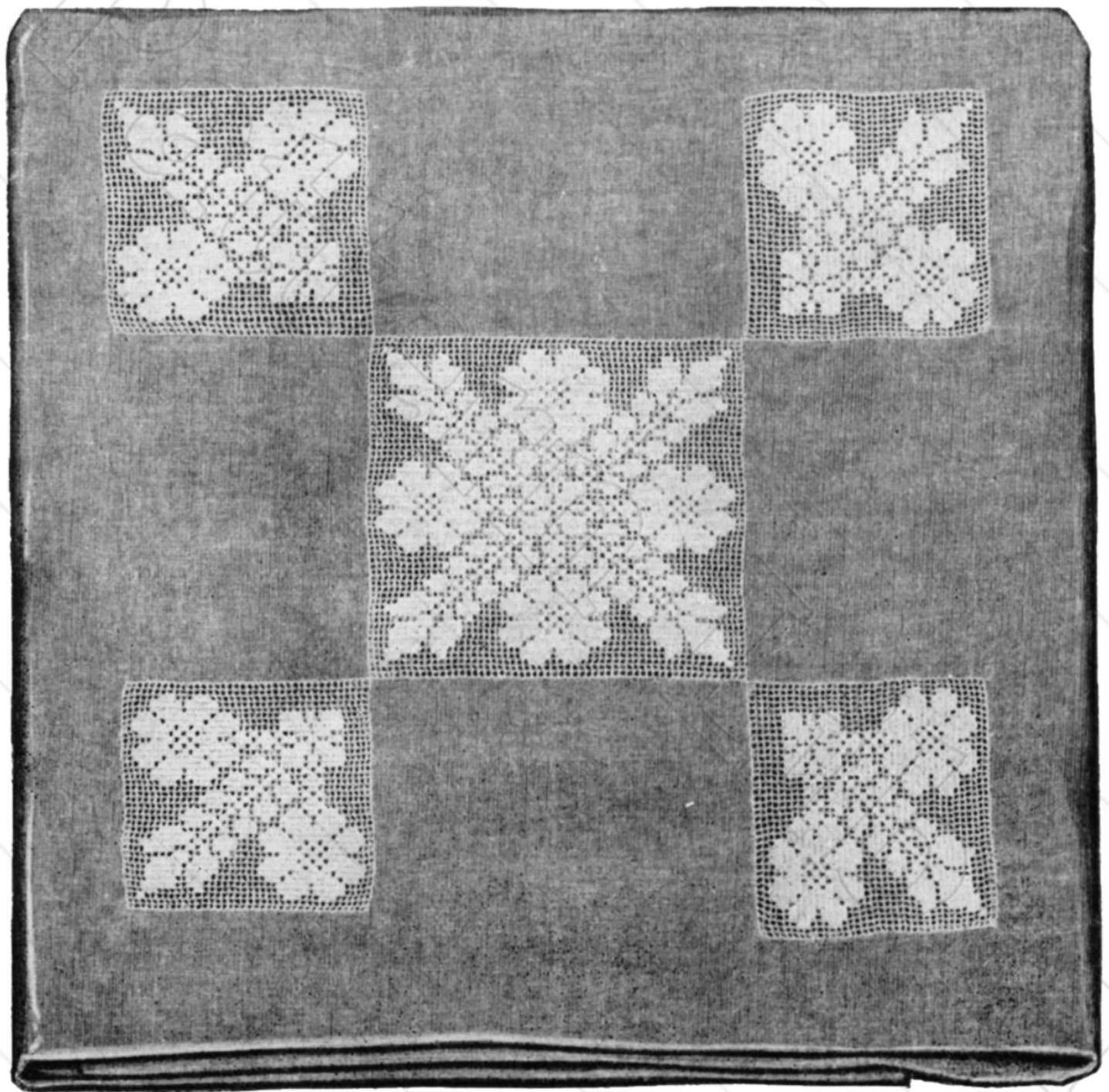
The design is worked with corners and long spaces, as described on opposite page (details below). Fine handkerchief linen is used for the pillow, and the crochet is inserted by instructions on page 5.



BEDSPREAD, COSMOS DESIGN

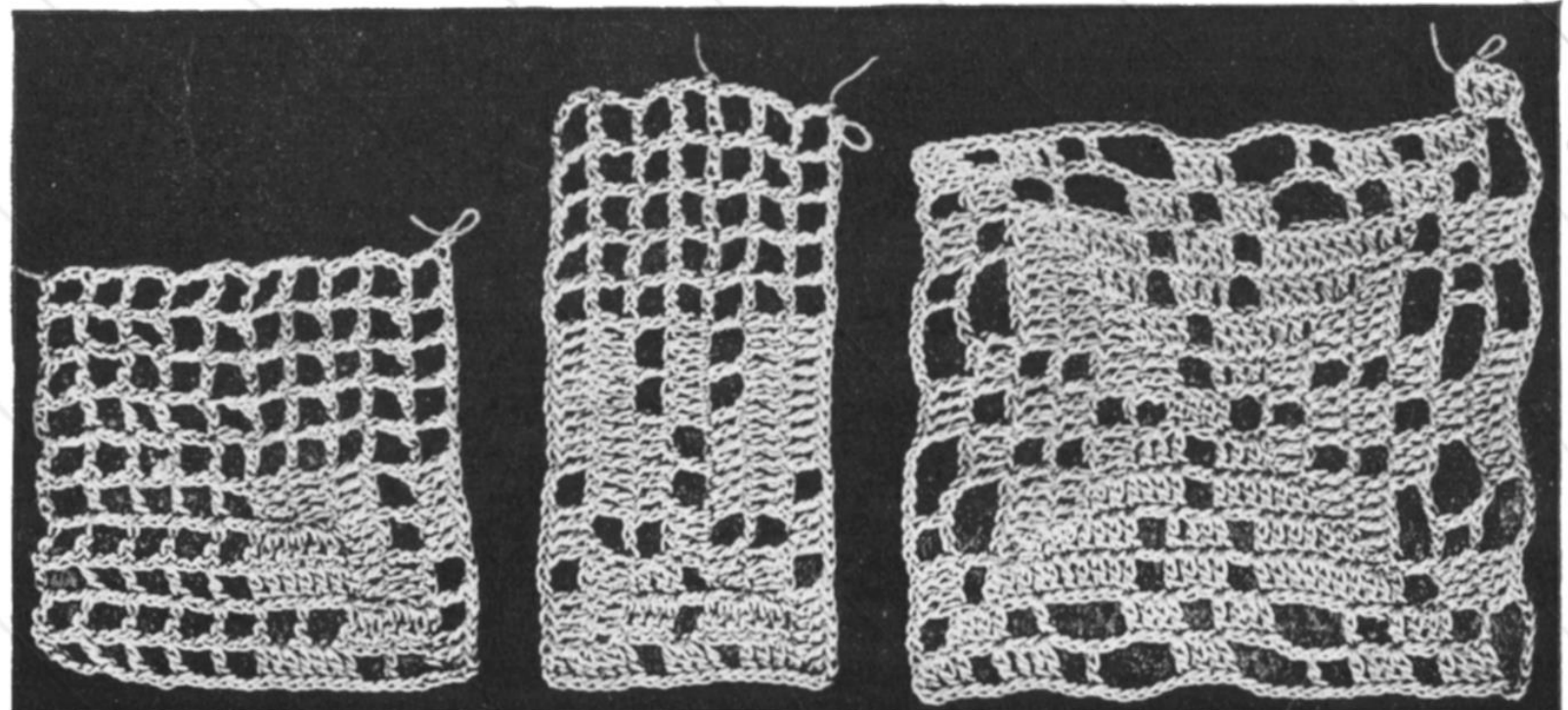
This spread was designed for a wooden frame, and so has no foot piece to tuck in. It simply lies over the bed and falls softly on each side. If desired, a pillow scarf could be made to cover the pillows in day time.

Clark's O. N. T. Mercerized Crochet, Clark's O. N. T. "Lustre" or Clark's O. N. T. Crochet Twist would each work up prettily for this spread. The square may be worked around, using the long spaces; or back and forth, in true filet mesh.



DETAILS FOR THE COSMOS DESIGN

The Small Square, Oblong, and Large Square





DIRECTIONS FOR DRESSER SCARF

Combine Clark's O. N. T. Crochet Twist with heavy linen to make this handsome scarf.

Square Medallion.

1st Row—Ch 16, join, 17 s st in the ring, ch 12, turn, skip 5 s st, sl st in next, turn, 11 s st under 12 ch, ch 12, turn, skip 5 of the 11 s st, sl st in next, turn, 5 s st under ch, * ch 12, turn, skip 5 s st, sl st in joining of last loop, turn, 5 s st under 12 ch, ch 8, turn, skip 5 s st, sl st in next (joining), turn, 5 s st under 8 ch, skip 5 s st, sl st in next, turn, 11 s st under 8 ch, 5 s st in each of next 2 spaces. Repeat from * ounce, 6 more s st in same ch, 5 s st in next ch, 11 s st in corner sp and 5 s st in each of next 2 sp.

2nd Row—Beginning at corner, 10 s st in next 10 st, ch 5, turn, skip 4, sl st in next, turn, 11 s st under 5 ch, 3 s st in next 3 s st, ch 2, turn, tr in first of 11 st, * ch 2, skip 1, tr in next, repeat from * 5 times, ch 2, skip 2 st on square, sl st in next (7 spaces in all), turn, 2 s st in sp, 1 s st on tr, repeat 6 times around scallop. 3 s st in next 3 st, ch 19, turn, skip 1 ch, 10 s st in next 10 ch, sl st in next, cross to other side, 10 s st up other side, 3 s st in end, 10 s st down other side to stem, cross over, 6 s st in next 6 st, ch 5, sl st in 6th st of adjoining side of scallop, turn, 5 sl st on ch back to end of leaf, 2 s st in end st, s st in each st down to stem, sl st in each of next 2 ch of stem, ch 17, sl st in 10th from needle to form ring, 3 s st, 1 d, 12 tr, 1 d, 3 s st in ring, join, cross over, 3 s st on 3 s st, 1 d on d, ch 5, sl st in middle of upper side of leaf, 5 sl st on 5 ch back to work; on the next 9 st work * 3 s st, picot, repeat twice, 7 s st on next 7, join, 7 sl st down stem to leaf, ch 14, skip 1 ch, 10 s st in next 10 ch,

sl st in next, cross over, 10 s st up other side, 3 s st in end, 10 s st down other side to stem, cross over, 6 s st up side, 5 ch, sl st in 4th from stem of ring, 5 sl st on 5 ch back to work, s st in each st to end of leaf, 2 s st in end, s st down other side of stem, 2 sl st in stem, 5 sl st in 5 ch to corner of square. Repeat directions for other three sides. Break thread and fasten in center of scallop of first row.

3rd Row—Ch 8 for long tr, ch 6, 2 s st in 2 st at end of leaf, ch 10, s st in first picot, ch 4, 1 tr in middle picot, ch 5, tr in same picot, ch 4, s st in last picot, ch 10, 2 s st in end of leaf, ch 6, long tr (thread over 6 times), in center of scallop. Repeat on remaining three sides, joining to 8th st of 8 ch.

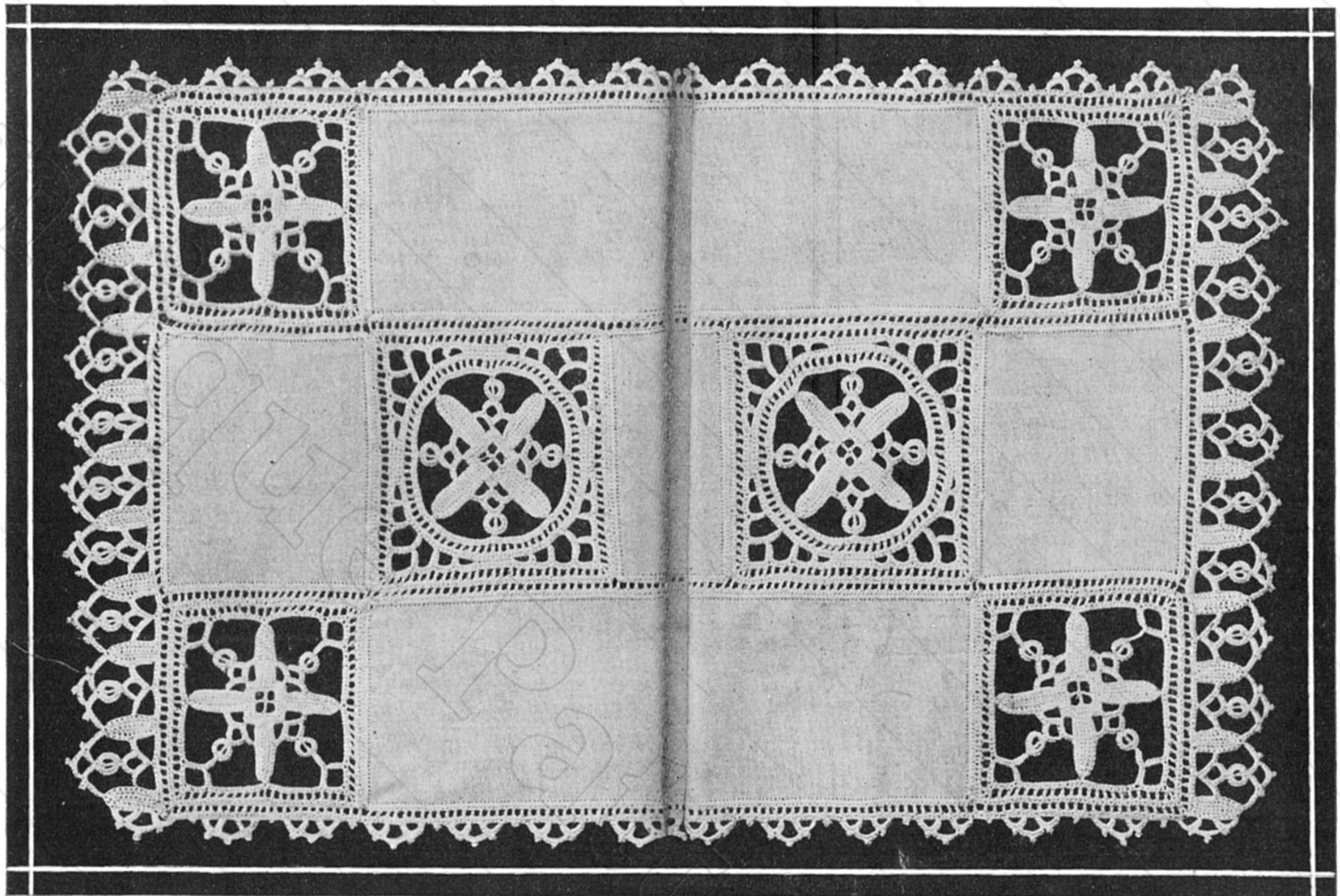
4th Row—S st in every st below, working 7 s st in the corner space.

5th Row—Tr, ch 1, skip 1, tr in next, all round, working 3 tr with 1 ch between in each corner.

6th Row—S st in every st below, working 3 s st in corner st.

The Oblong Medallion is made in the same manner as the square, omitting the flowers and leaves from two opposite sides. In the third row, join to the sides of scallops on these sides as shown in the illustration.

Insert the squares and oblongs in linen, join the strips by working like the 5th row, then work the 4th, 5th and 6th rows all round the scarf. On the ends, between the oblong, work a row of scallops, joined as shown by chain of 8, over which s sts are made.



DIRECTIONS FOR SCARF

Materials: Clark's O. N. T. Crochet Twist and heavy linen. The quantity of both is governed by the size of scarf desired.

THE LARGE SQUARE

1st Row—Ch 9, 1 tr in 1st st, ch 5, 1 tr in same st, ch 5, 1 tr in same st, join to 4th st of 9 ch.

2nd Row—* 2 s st over 5 ch, 3 s st in 3rd st of 5 ch, to form corner, 2 s st over remainder of 5 ch, 1 s st on tr. Repeat from * 3 times, join.

3rd Row—Ch 14, sk 1 ch, 13 s st in 13 ch, 1 s st in square (the next st of previous row), turn, 12 s st in 12 s st up side of bar, 3 s st in top s st, 1 s st in each s st down the other side of bar, 1 s st in square, * 2 s st in next 2 s st, 3 s st in corner st, 4 s st in next 4 s st, repeat from beginning of row to the *, then turn, 5 s st up the side of bar (ch 5, turn, 1 s st in corner of square, 5 ch, 1 s st in 5th st of last bar, turn, 6 s st over 5 ch, 3 s st over next 5 ch, ch 6, turn, 1 s st in center of 1st loop, turn, 4 s st over 6 ch, ch 5, 1 tr in 5th st from needle, ch 5, 1 tr in 5th st from needle, ch 5, 1 slip st in same st, 7 s st over next 5 ch, close with sl st, 4 s st over remainder of 6 ch, 3 s st over remainder of 5 ch), 1 s st in each stitch to top of bar, slip stitch down the other side. Repeat from * twice, 2 s st in next 2 sts, 3 s st in corner, 2 s st in next 2 sts, sl st to 5th st of first bar made, repeat part in parenthesis, sl st to top of bar.

4th Row—* Ch 14, 1 s st in top of circle, ch 14, 1 s st in top of bar, repeat around and join.

5th Row—* 19 s st over 14 ch, repeat around and join.

6th Row—* Ch 4, skip 1 s st, 1 tr in next, * ch 1, skip 1, 1 tr in next, repeat around from * and join.

7th Row—* 1 s st over 1 ch, 1 s st on tr, repeat around and join.

8th Row—Turn, sl st in each of next 15 sts, * s st in each of next 9 sts, ch 5, sk 4 s st, 1 s st in

next, turn, 2 s st over 5 ch, ch 7, sk 4 s st on circle, 1 s st in next, turn, 4 s st over 7 ch, ch 13, sk 4 s st, 1 s st in next, turn, 11 s st over 5 ch, ch 13, turn, 1 s st in middle of 11 s st, 5 s st over 3 ch, ch 7, skip 4 s st on circle, 1 s st in next, turn, 4 s st over 7 ch, ch 5, skip 4, 1 s st in next, turn, 2 s st over 5 ch, ch 4, skip 4, * repeat part between ** 3 times, join.

9th Row—Turn work, 1 s st in each of next 9 s st, 5 s st in each space, 13 s st in each corner space all round and join.

10th Row—Ch 4, sk 1, 1 tr in next, * ch 1, sk 1, 1 tr in next, repeat from * all round, in each corner working 3 tr with 1 ch between. Join.

11th Row—1 s st in tr, 1 s st over ch, repeat around, with 3 s st in each corner st.

SMALL SQUARE

1st, 2nd and 3rd Rows—Like large square.

4th Row—* Ch 20, s st in top of ring, turn, 11 s st over 20 ch, ch 13, 1 s st in middle of 11 s st, turn, 5 s st over 13 ch, ch 5, 1 s st in top of bar, repeat around, join.

5th Row—* 15 s st over 1st space, 13 s st in corner space, 15 s st over next space, 1 s st in s st on top of bar, repeat around, join.

6th Row—Like 10th row. **7th Row**—Like 11th row.

THE STRIPS of Linen are finished around the edge with s st. The center strip has a row of 1 tr, skip 1, 1 ch, down each side, to which narrow strips are joined with needle and thread. Join as shown, then make a row of 1 tr, sk 1, 1 ch, all around.

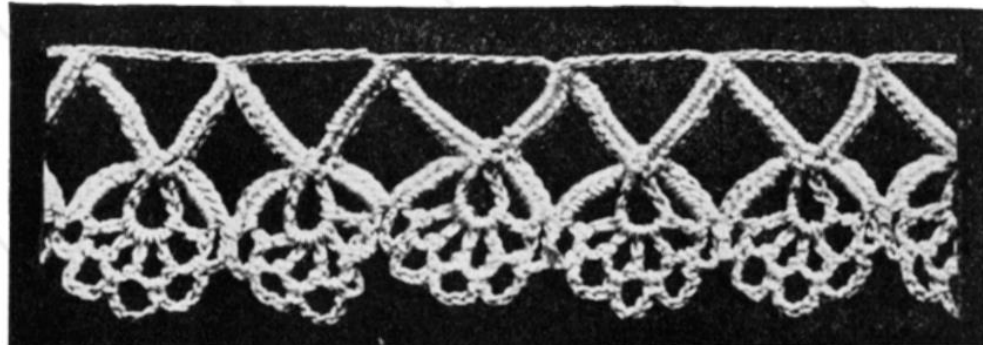
ENDS OF SCARF

1 s st in first 3 sts of foundation, ch 10, skip 1 ch, s st in each of next 9 ch, 1 s st in next stitch of foundation, turn, 8 s st in 8 s st of bar, 3 s st at top, 8 s st down the other side.



GENTLEMAN'S SCARF

Above is a suggestion for a gentleman's scarf, made with 7 balls of white and 8 balls of black Clark's O. N. T. "Lustre" in pineapple stitch. A strand of white and one of black were crocheted together, except for the bordering bands, which were two strands of black.



DETAIL FOR LACE ON MOTOR VEIL

DIRECTIONS FOR LACE ON MOTOR VEIL

Two balls of Clark's O. N. T. "Lustre" will be required by the average worker for sufficient lace to trim both ends and one edge of this Motor Veil shown on the opposite page. Use Clark's O. N. T. Crochet Needle No. 9 and ch. 24. Turn and work a s st in the first ch, ch 1, turn. 12 s st over ch, 12 ch, s st in last s st, 5 ch, turn, tr in ch, * ch 3, tr in ch, repeat from * three times (making 5 tr in same ch), ch 5, sl st in last of 12 s sts, ch 1, turn, 8 s st over ch, s st in tr (when working repeats, the flower is joined to previous one by removing the needle from the work, inserting it in the top one of the 8 sts of previous flower, then through the last loop, and drawing the thread through both), then * ch 5, s st in next ch, repeat from * four times, putting last s st in tr, 8 s st over next ch, 12 s st over remaining ch and repeat from beginning.

DIRECTIONS FOR LACE FOR FICHU

This filmy fichu was made with 2 balls of Clark's O. N. T. Mercerized Crochet, size 100, and Clark's O. N. T. Crochet Needle, No. 14.

Begin with a chain of 49. Sk 7 ch, 2 sp, 3 bl, 2 sp, 5 bl, 3 sp, ch 10.

Row 2—Sk 7 ch, 3 sp, 2 bl, lg sp (see page 4). 5 bl, 2 sp, 2 bl, 2 sp (last is widened), ch 7.

Row 3—Wd sp, another sp, 2 bl, 1 sp, 5 bl, lg sp, 1 sp, lg sp, 3 bl, 2 sp, ch 7.

Continue, following pattern, until about 27 inches are made, then turn corner, work two scallops, reverse as indicated on pattern, and work like first half.

DIRECTIONS FOR CORNER

Used on Nightgown Case

These corners were made with 3 balls of Clark's O. N. T. Mercerized Crochet, size 40, and Clark's O. N. T. Crochet Needle, No. 11. Begin with ch 7, tr in first ch for sp, ch 7.

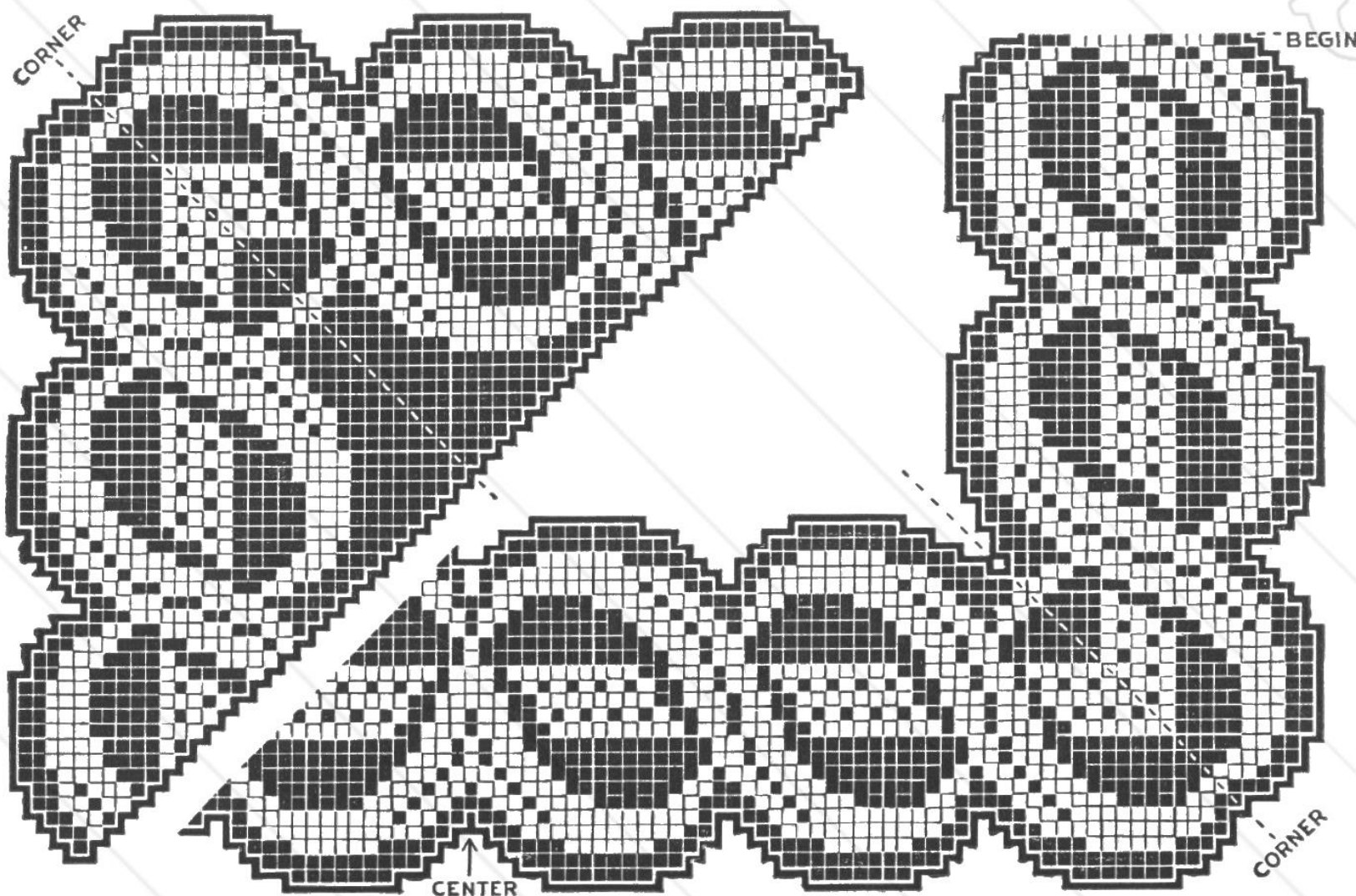
Row 2—Wd sp, 1 sp, wd bl, ch 7.

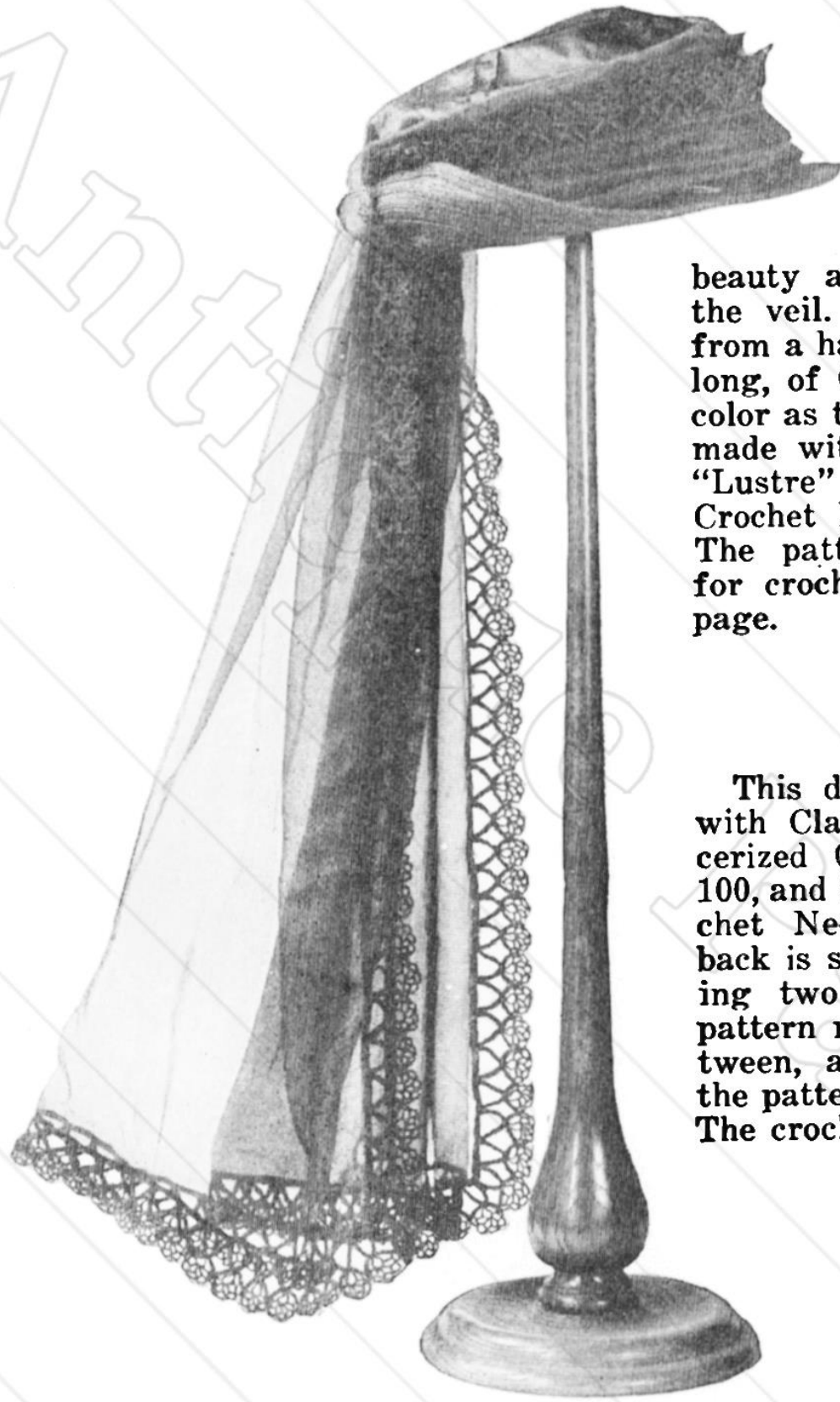
Row 3—Wd sp, 2 bl, 1 sp, wd sp, ch 7.

Row 4—Wd sp, 1 sp, 2 bl, 1 sp, 1 bl, wd bl, ch 7.

Row 5—Wd sp, 3 bl, 1 sp, 1 bl, 2 sp, ch 7.

Row 6—Wd sp, 2 sp, 4 bl, lg sp, (see page 4), wd sp, ch 5. Continue, following pattern, turning corner on dotted line.

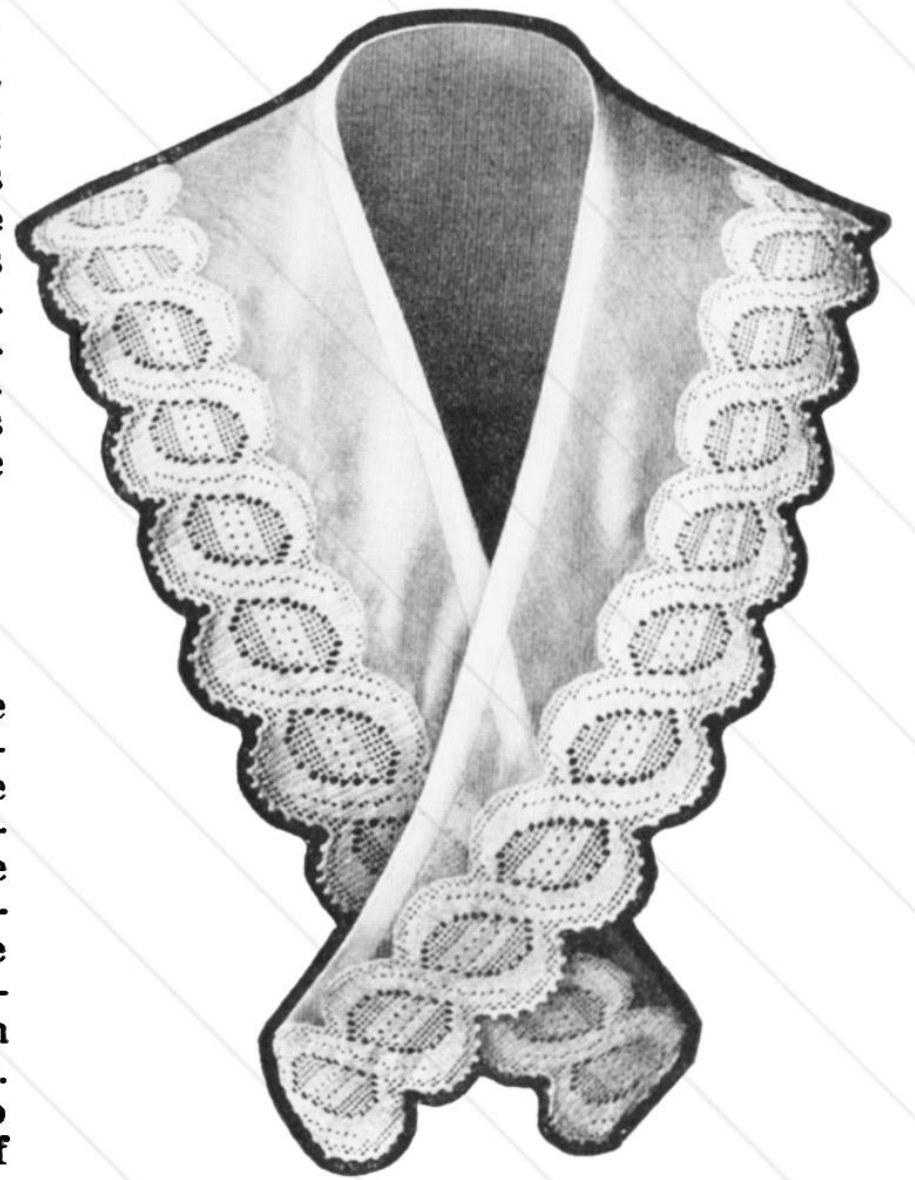




MOTOR VEIL

MOTOR VEIL

The crocheting on this veil gives it sufficient weight to keep it from blowing in the wind and also it adds to the beauty and individuality of the veil. The veil is made from a half width, two yards long, of Georgette, the same color as the crochet, which is made with Clark's O. N. T. "Lustre" and Clark's O. N. T. Crochet Needle, No. 8 or 9. The pattern and directions for crochet are on opposite page.



FICHU

FICHU

This dainty fichu is made with Clark's O. N. T. Mercerized Crochet, white, size 100, and Clark's O. N. T. Crochet Needle, No. 14. The back is square in effect, having two corners, with the pattern reversed midway between, as clearly shown in the pattern on opposite page. The crocheting is whipped to a very fine piece of French organdy, following the directions given on page 5.

NIGHTGOWN CASE

The elaborate case shown on the right is meant to be laid on the foot of the bed during the day and used as a receptacle for the "nightie." It is simply an oblong of silk, crepe, or linen, filled with perfumed cotton and edged with a puff of the material. Four triangles of crochet are arranged as shown, edged with flowered bands; a butterfly knot of ribbon and the roses is caught lightly in the center of the case and ribbons close it at the front edge. Directions for the crochet are on the opposite page.



NIGHTGOWN CASE

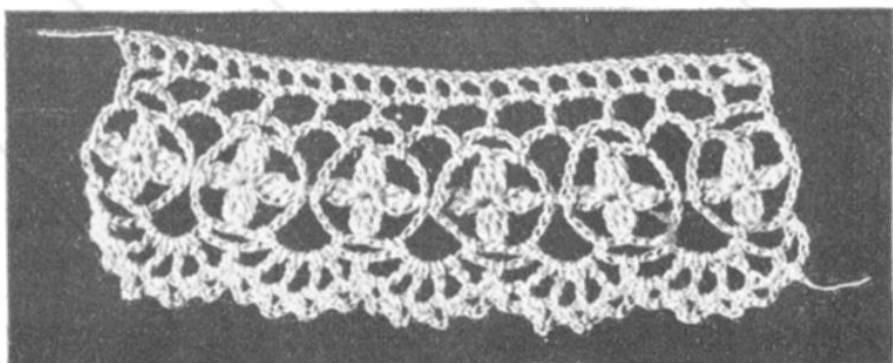


THE BUTTERFLY YOKE AND CAP

Pattern and directions on page 14

DAISY CHAIN

A very dainty little edge, suitable for a luncheon set, similar to the Bridal Wreath. This lace, to be its prettiest, should be worked with Clark's O. N. T. Mercerized Crochet, size 70 or 80, and Clark's Crochet Needle, No. 14. The lace may



be given more or less flare by the way the third row of the upper edge is made. A tr in each tr of second row, with 2 ch, or even 1 ch, between, will curve it very decidedly for the smaller circles.

Row 1 (Center)—Ch 8, in the 4th ch from needle make a cluster of 2 tr (hold last loop of each and

take last three loops off as one), ch 5, cluster of 3 tr in same ch, ch 5, in same ch work one tr, draw loop through first of 8 ch, 1 more tr in same ch (this forms a cluster of three), ch 5, another cluster of 3 tr in same ch, ch 5, join with sl st. Repeat for desired length.

Top Edge, Row 1—S st in each space with 5 ch between.

Row 2—Tr in each sp, with 3 ch between.

Row 3—Tr in tr, ch 1, tr in sp, ch 1, repeat for length. (This row may be made with fewer tr and ch to draw up the lace to shape for small doilies.)

Scalloped Edge, Row 1—S st in each space with 5 ch between.

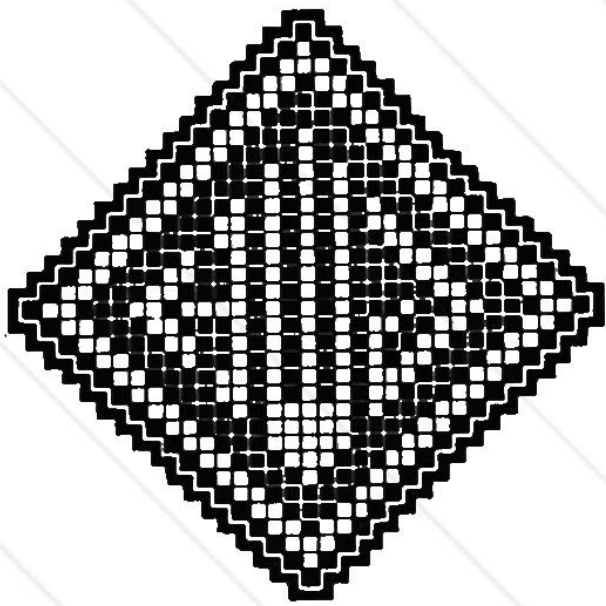
Row 2—S st in ch over flower, ch 2, 4 tr in next ch, with 2 ch between tr.

Row 3—S st each side of s st, * ch 3, 2 s st in next sp, repeat three times, ch 2, and repeat from beginning of row.



THE ROSALIE CAP AND YOKE

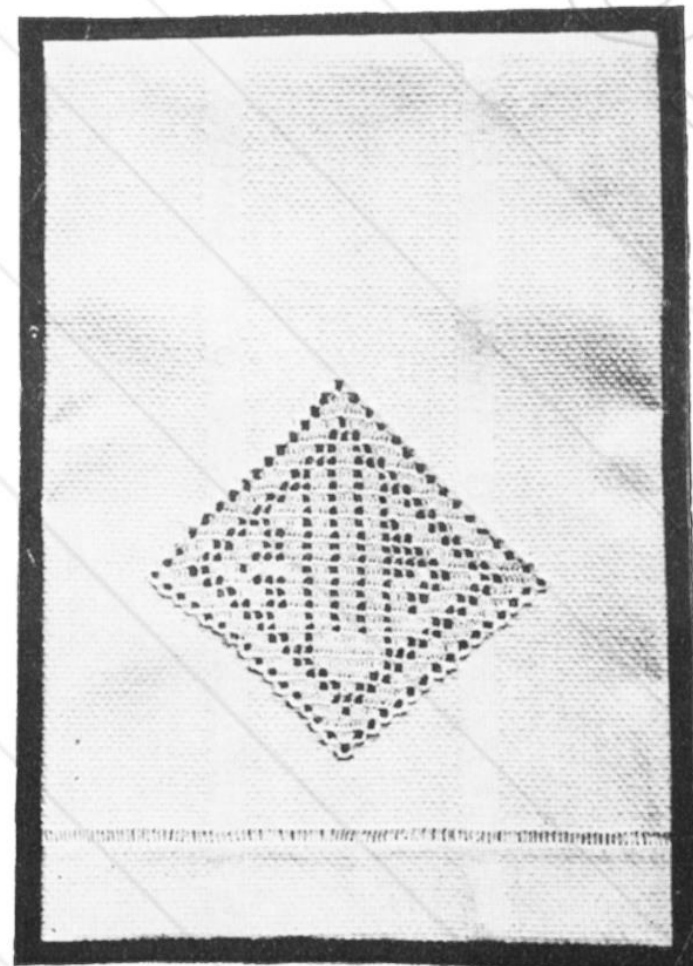
Pattern and Directions on page 14

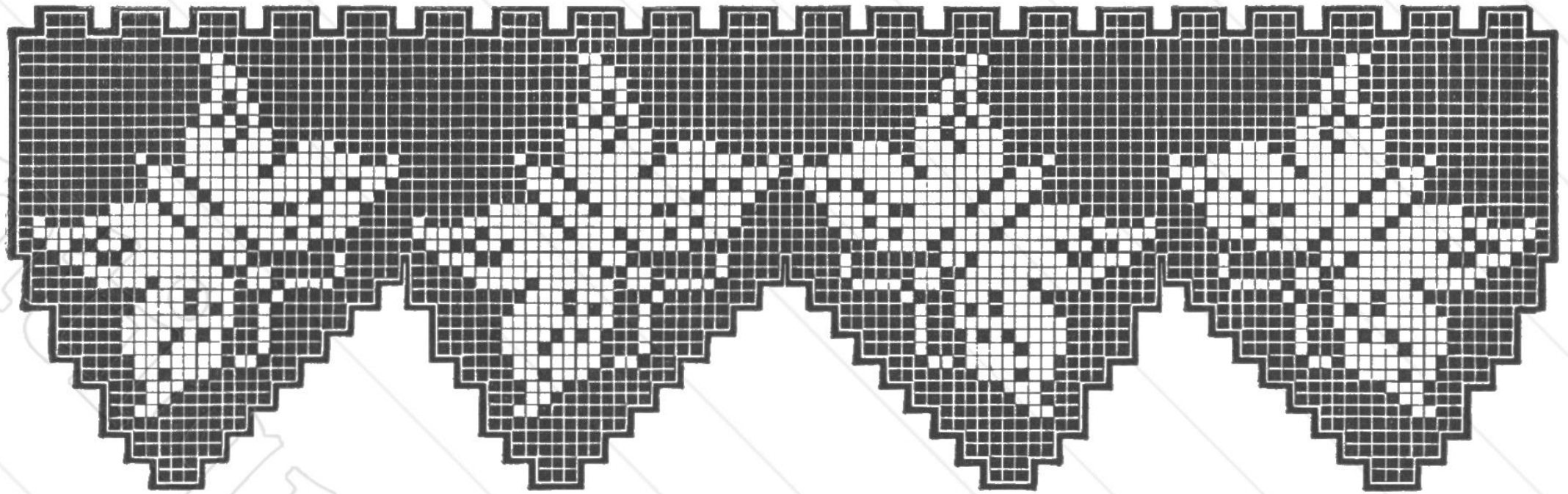


MONOGRAM TOWEL

The crochet in this towel was made with Clark's O. N. T. Mercerized Crochet, size 70, and Clark's O. N. T. Crochet Needle, size 12.

The monogram diamond is begun with a ch of 7, to make 1 sp. Then for the first half each row is widened at both ends. For the second half it is decreased at both ends of every row. The letter of the last name is in the middle, being the largest and most prominent; that of the first name is on the left and that of the middle name is on the right. The monogram reads H. J. W.





BUTTERFLY DESIGN

This design is used for the Butterfly Cap and Yoke, as illustrated on page 12. To make it, begin with a chain of 55.

- Row 1—17 sp, ch 16.
 - Row 2—Wd 4 sp, 1 sp, 2 bl, 14 sp, ch 10.
 - Row 3—Wd 2 sp, 15 sp, 2 bl, 4 sp, ch 16.
 - Row 4—Wd 4 sp, 3 sp, 3 bl, 17 sp.
 - Row 5—17 sp, 1 bl, 1 sp, 1 bl, 7 sp, ch 10.
 - Row 6—Wd 2 sp, 6 sp, 2 bl, 1 sp, 2 bl, 14 sp.
- Continue, following pattern.

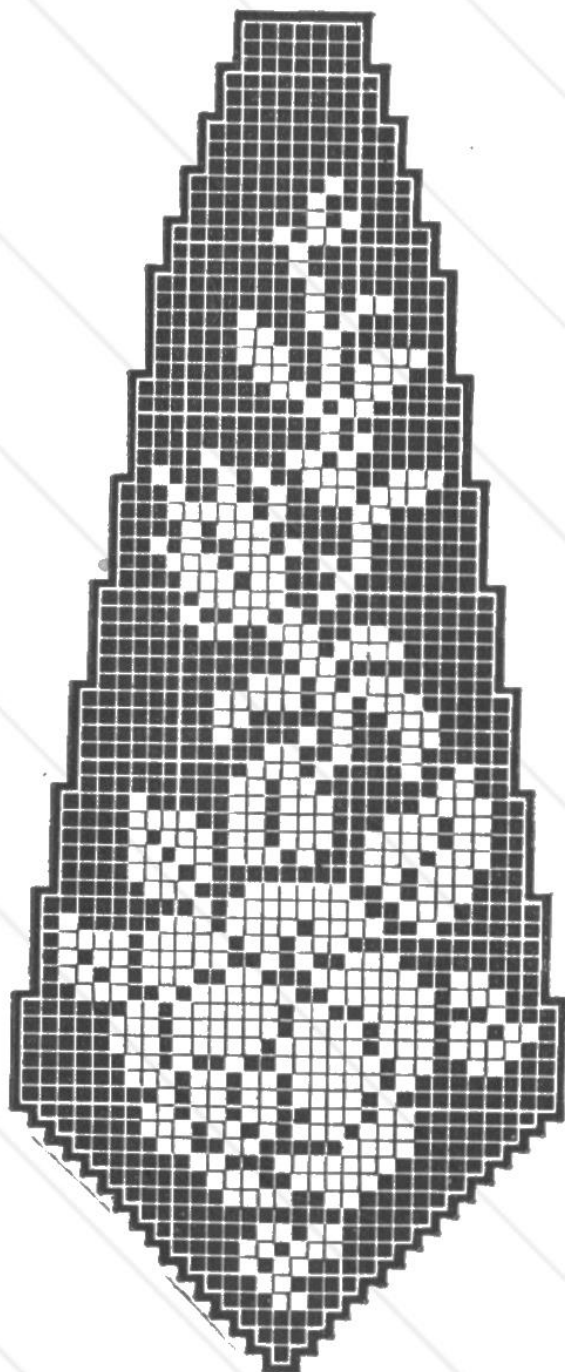
ROSEBUD EDGE

- Row 1—Ch 43, 2 sp, 1 bl, 1 sp, 3 bl, 1 sp, 1 bl, 2 sp, 1 bl, 1 sp.
- Row 2—2 sp, 1 bl, 1 sp, 1 bl, 2 sp, 2 bl, 4 sp.

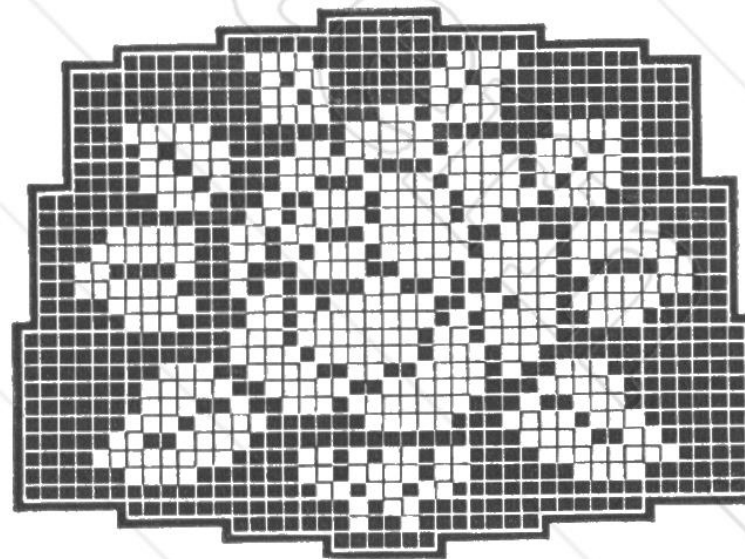
ROSEBUD BEADING

This beading, worked in one with the rose edging shown next to it, is used for the top of the dainty camisole illustrated on the cover. When working them together work row 1 of beading, then edge; next, row 2 of edge, then beading, and so on.

- Row 1—Ch 23, sk 7 ch, 6 sp.
- Rows 2 and 3—1 sp, ch 11, 1 sp.
- Row 4—6 sp. Row 5—2 sp, 2 bl, 2 sp.
- Row 6—1 sp, 4 bl, 1 sp.
- Row 7—1 sp, 2 bl, 1 sp, 1 bl, 1 sp.
- Row 8—2 sp, 2 bl, 2 sp.
- Row 9—6 sp. Rows 10 and 11—Like 2 and 3.
- Rows 12 and 13—6 sp. Repeat from row 2.



Rosalie Band (above)
For Camisole on page 13



ROSALIE MEDALLION

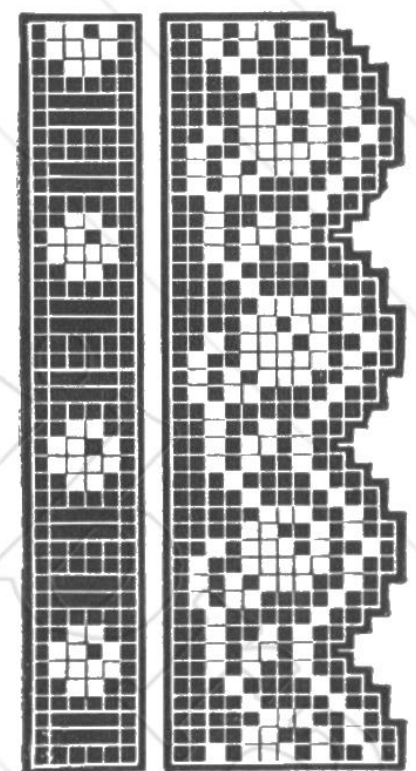
This design is adaptable to numerous articles: handbags, underwear or dress decoration, household linens, etc.

- Ch 22 and work one row of 6 sp.
- Row 2—Ch 22, 6 sp on ch, 6 sp, add 6 sp.
- Row 3—Ch 22, 13 sp, 1 bl, 2 sp, 1 bl, 7 sp, add 6 sp. Continue, adding or decreasing as shown on the pattern.

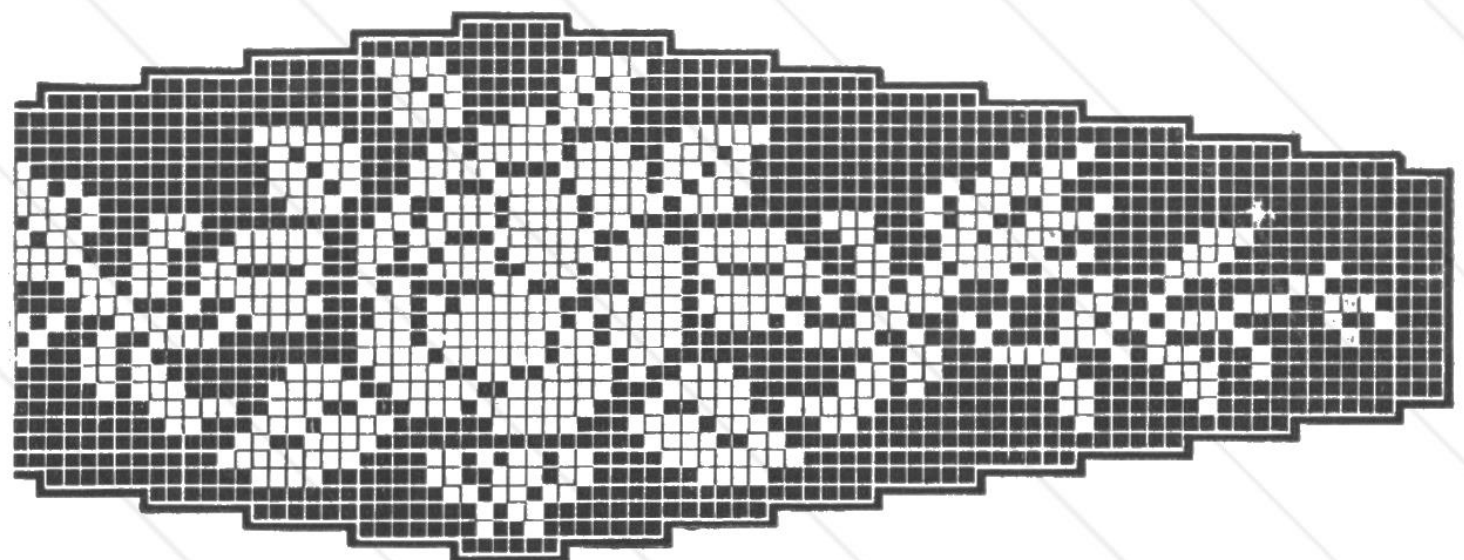
The Rosalie Band is started on a ch of 7, with 1 sp. Widen at each end of first 16 rows, then decrease as shown.

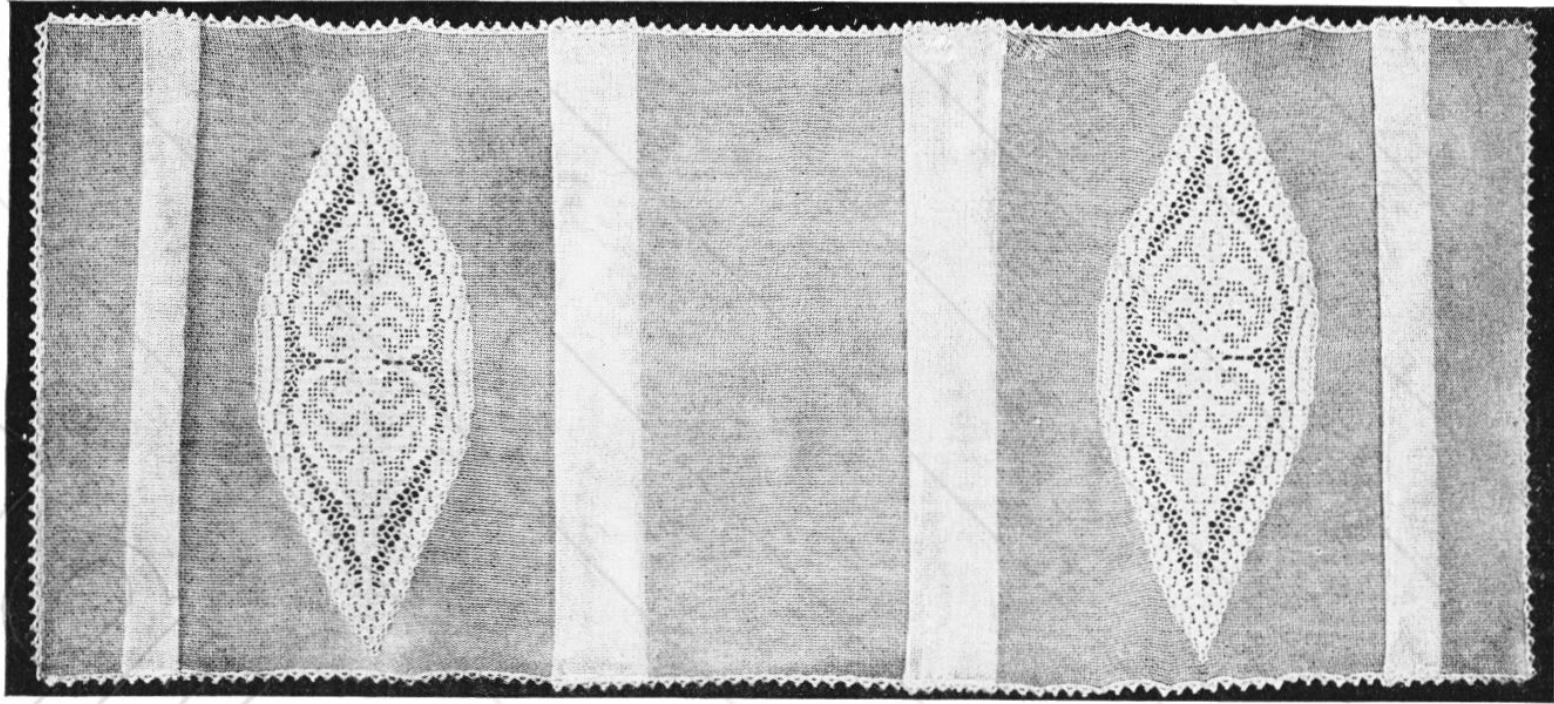
The Rosalie Bandeau is started on a ch of 43, with 13 sp, and is widened as shown by pattern. The second end is completed like the beginning.

Rosalie Bandeau (at right)
For Cap on page 13



Rosebud Beading and Rosebud Edging





PILLOW SCARF WITH CLEOPATRA MEDALLION

DIRECTIONS FOR THE CLEOPATRA MEDALLION

This medallion is unusually attractive, in either fine or coarse cotton. A particularly handsome bed set is made of Clark's O. N. T. Mercerized Crochet, ecru, size 20, using Crochet Needle No. 8. Six balls were required to make the scarf and spread illustrated. The crochet is set into ecru marquisette by the method given on page 5. Insertion runs between all adjoining pieces and the edge is finished with a picot scallop.

To make the medallion, begin with a ch of 7 and work a tr in first ch for 1 sp, ch 5, turn.

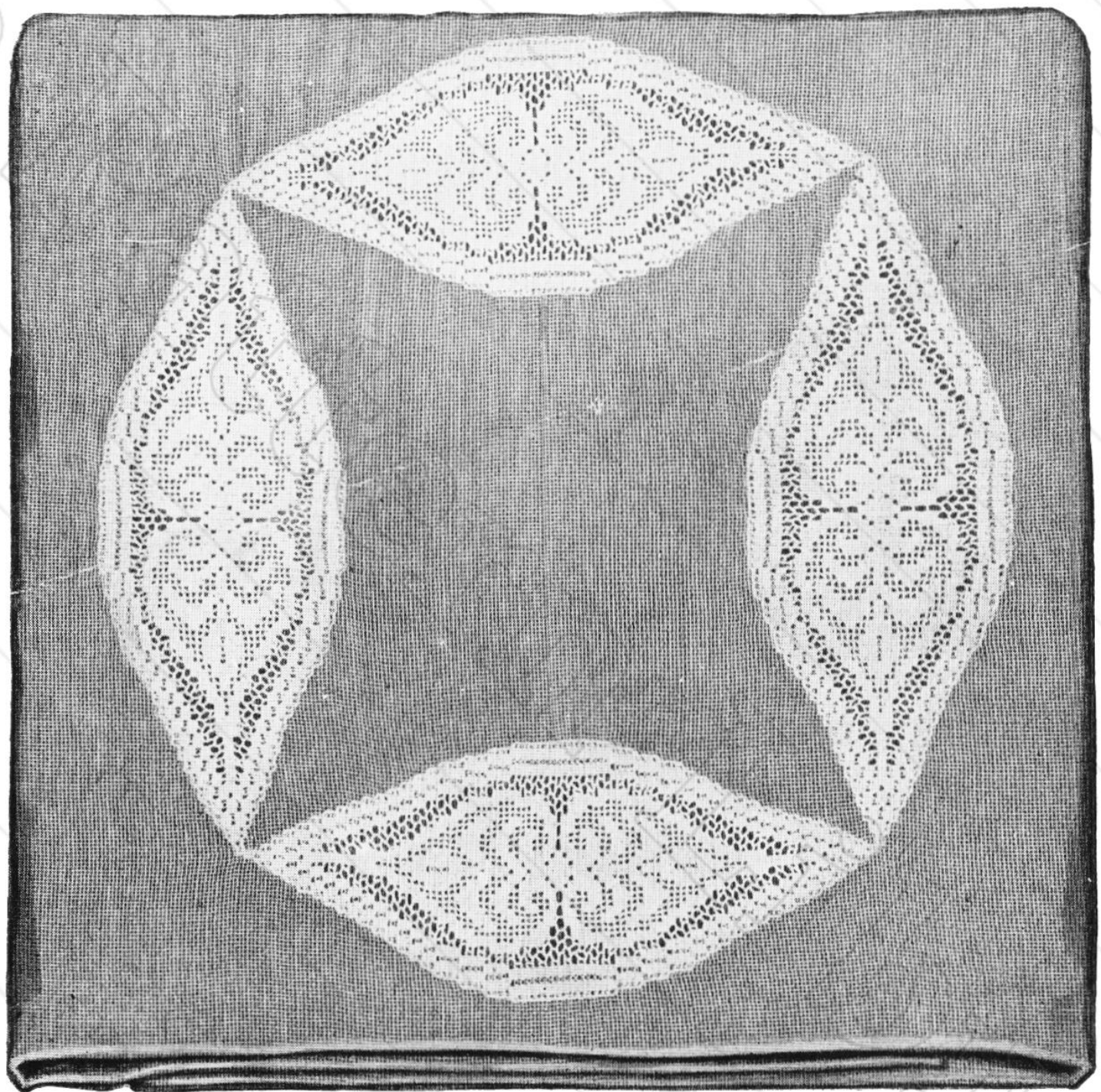
Row 2—Tr in third ch below, ch 7.

Row 3—Wd sp, 1 bl, wd sp, ch 5.

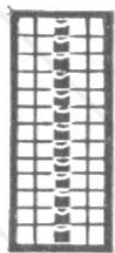
Row 4—1 sp, 1 bl, 1 sp, ch 7.

Row 5—Wd sp, 1 bl, h s st, sk 2 tr, 1 bl, wd sp, ch 5.

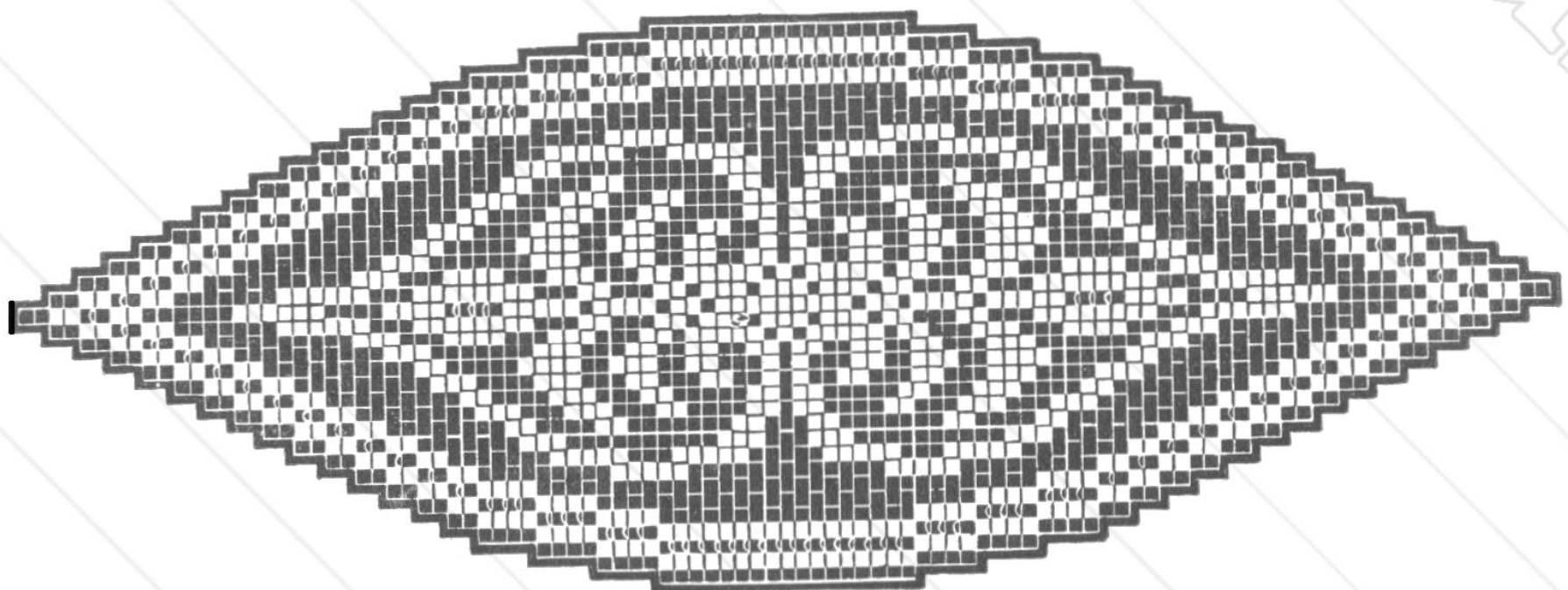
Row 6—1 sp, 1 bl, 1 sp, 1 bl, 1 sp, ch 7. Continue, following pattern. Make four for the spread and two for the scarf, inserting them as illustrated, or as preferred.



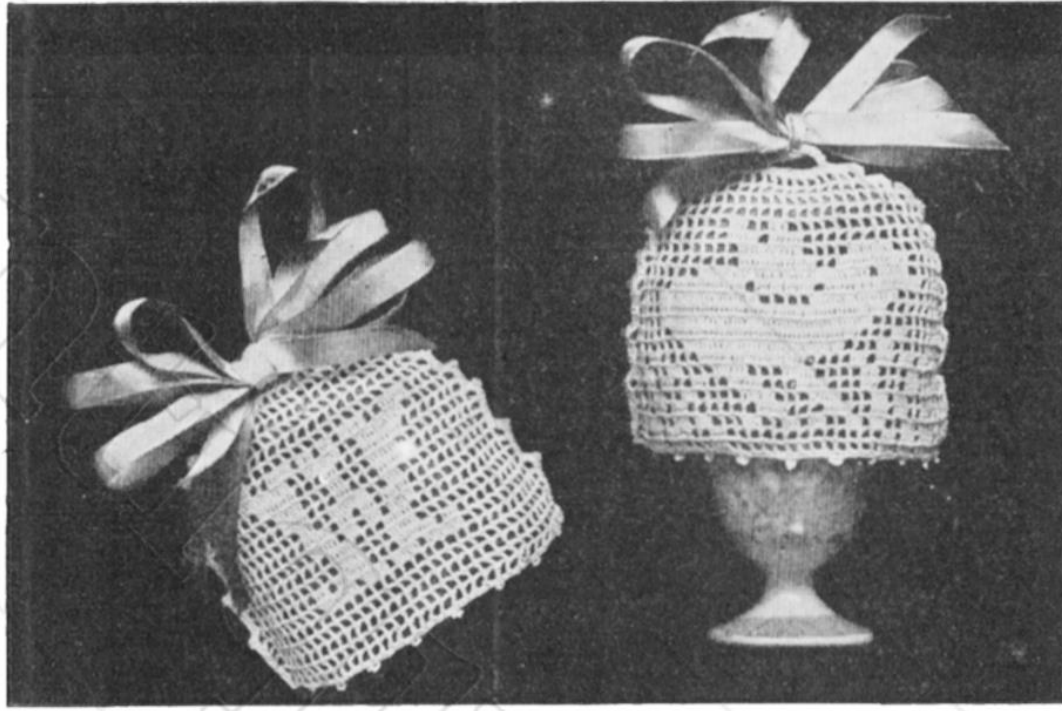
BEDSPREAD WITH CLEOPATRA MEDALLION



PATTERN FOR INSERTION



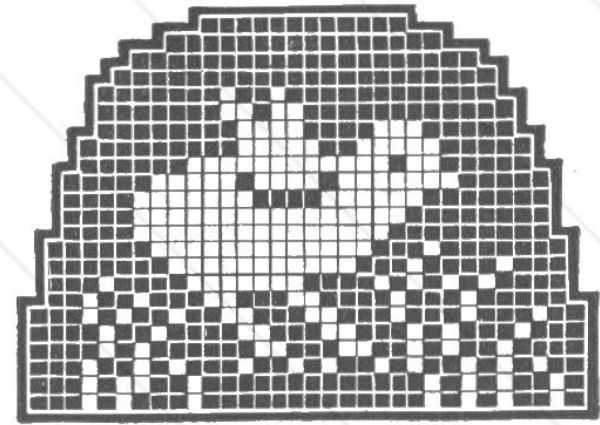
PATTERN FOR CLEOPATRA MEDALLION



AN EGG COZY (front and back views)

DIRECTIONS FOR THE EGG COZY

This cunning little cozy will add to the daintiness of the breakfast table, as well as keep the egg warm. It is crocheted with Clark's O. N. T. Mercerized Crochet, white, size 70, and Clark's O. N. T. Crochet Needle, No. 13.



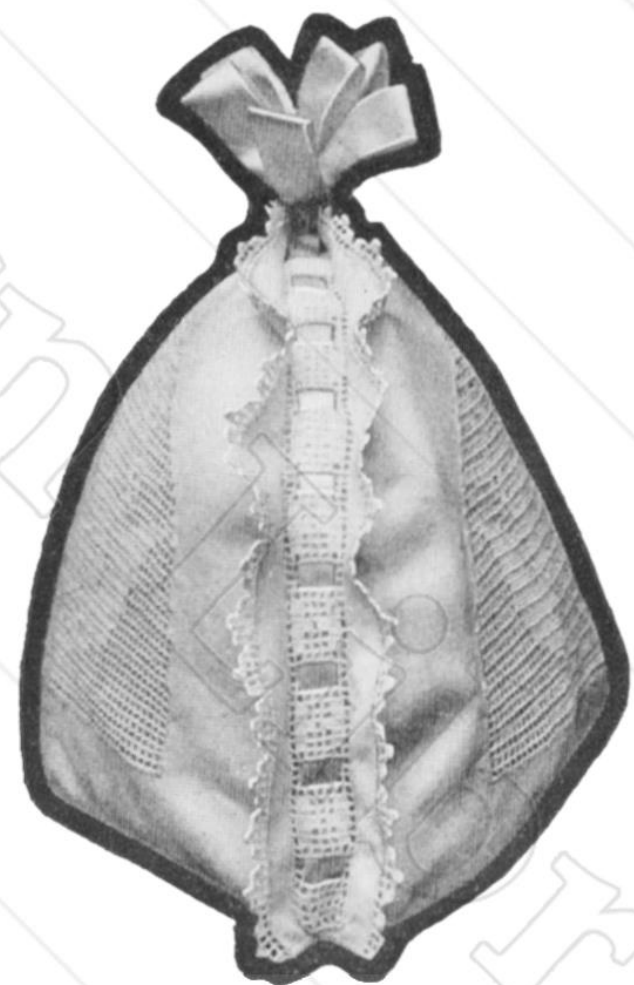
PATTERN FOR THE EGG COZY

Begin with a ch of 100 and work 1 sp, 1 bl, 2 sp, 1 bl, 1 sp, 1 bl, 1 sp, 1 bl, 13 sp, 1 bl, 3 sp, 1 bl, 1 sp, 1 bl, 3 sp. Continue, following pattern. For the second side, work an initial from one of the alphabets in this book, making the work the same size as the first side. A little fly-a-way bow tied at the top serves as a handle.

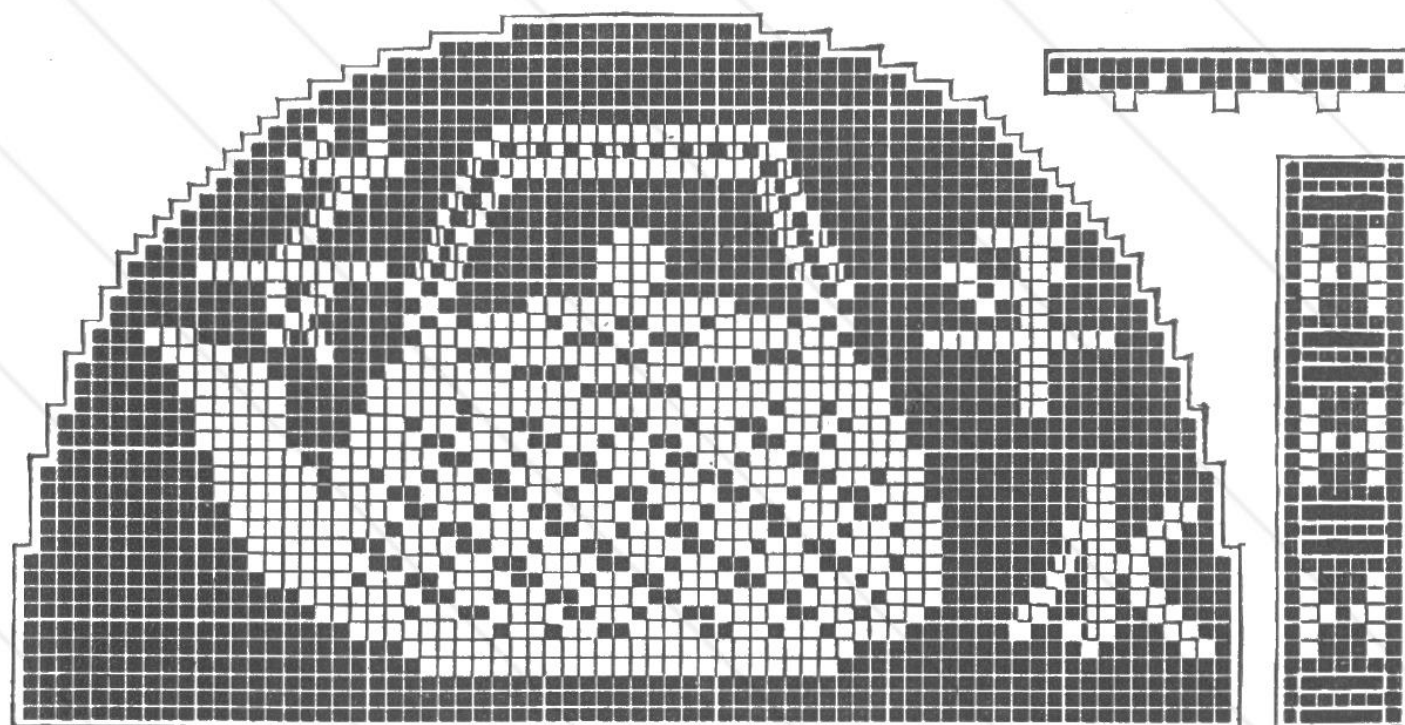
After the two sides have been made, crochet them together with single stitches and picots, then continue around the lower edges. Make a soft silken lining, padded, to match the color scheme of the room or china.



**"GOOD LUCK"
TEA COZY**



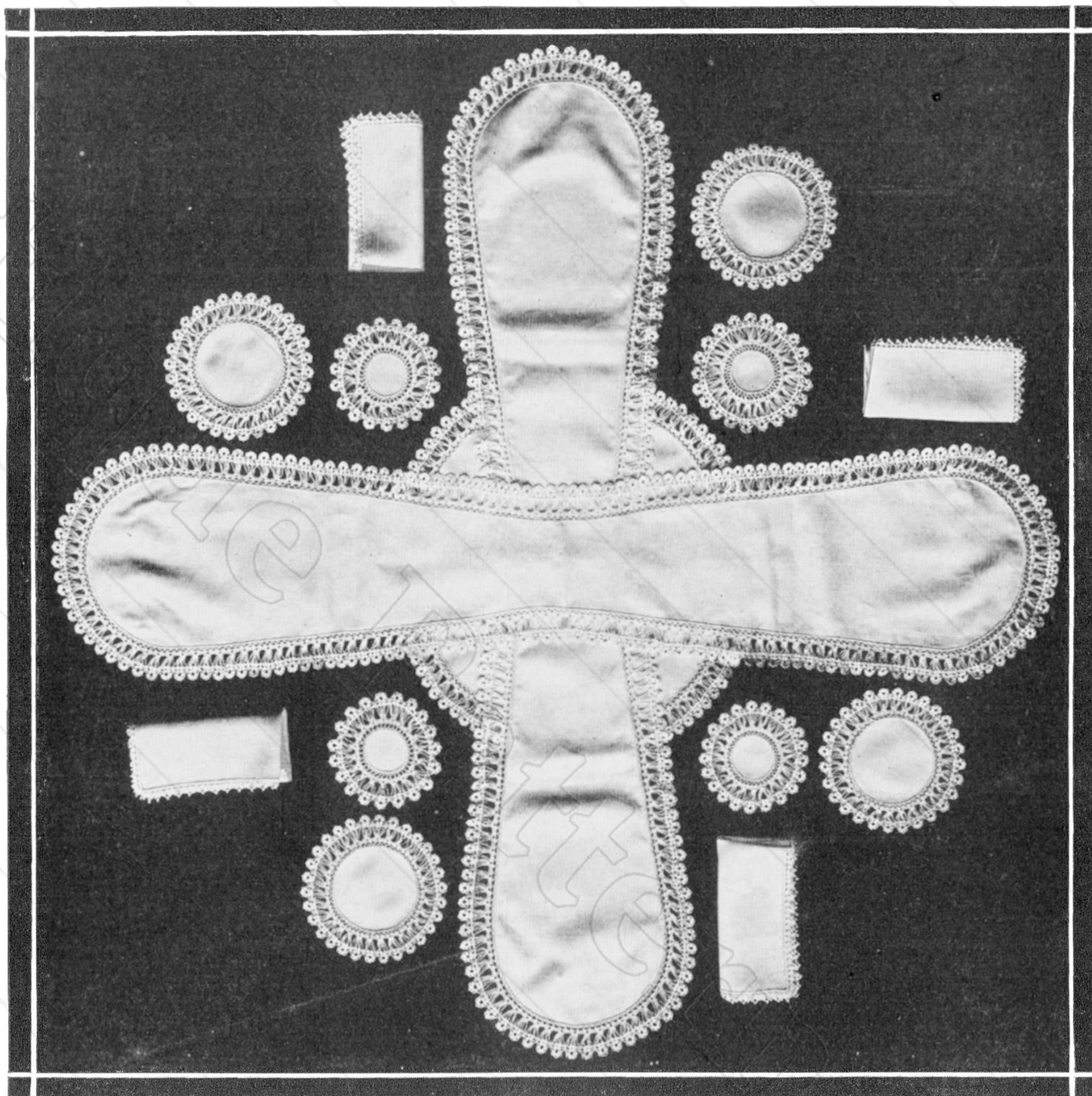
END VIEW, SHOWING INSERTION



The characters on this cozy are copied from Chinese writing that signified "A Cup of Tea for Good Luck." They are read from the right toward the left.

Use Clark's O. N. T. Mercerized Crochet, size 50, and Clark's O. N. T. Crochet Needle No. 12, and begin with a chain of 214. Make 3 rows of 70 spaces each.

Row 4—23 sp, 24 bl, 23 sp. Follow pattern. Make beading and edging from pattern, sewing beading half inch from edges of linen pieces.



THE BRIDAL WREATH LUNCHEON SET

This dainty set is worked with Clark's O. N. T. Mercerized Crochet, size 70, and Clark's O. N. T. Crochet Needle, size 12. The work should be neither tight nor loose to give the handsomest results, for the design will be stiff if worked too tightly and stringy if too loose. The set may be for six, eight, or twelve places and may include the round centerpiece under the crossed runners, or not, as preferred. Omit the 4th and 5th rows for the napkins. For the small circles the spaces of first row should be shorter than for the larger ones or where the edges are straight.

The linen centers should be of the following sizes:

- Tumbler Doily, two inches.
- Bread and Butter Plate, four inches.
- Service Doily, six or eight inches.
- Centerpiece, sixteen to twenty-two inches.
- Napkin, fifteen inches.
- Runners, one yard to 54 inches long, eight inches wide at ends.

A tumbler doily is shown on last cover.

Prepare the linen by hemming, scalloping, buttonholing, or a row of single stitches.

Row 1—* Ch 5, s st in third to fifth stitch, according to size of circle. Repeat around, making an even number of spaces.

Row 2—Sl st to center of first loop, then * ch 5, s st in next loop. Repeat around.

Row 3—Sl st to center of loop, * shell of 3 tr, 2 ch, 3 tr in next loop, s st in next loop. Repeat around.

Row 4—Sl st to 2 ch, * ch 24, s st in same 2 ch, repeat twice, ch 3, s st in s st, ch 3, s st in next 2 ch. Repeat around, ending with 12 ch.

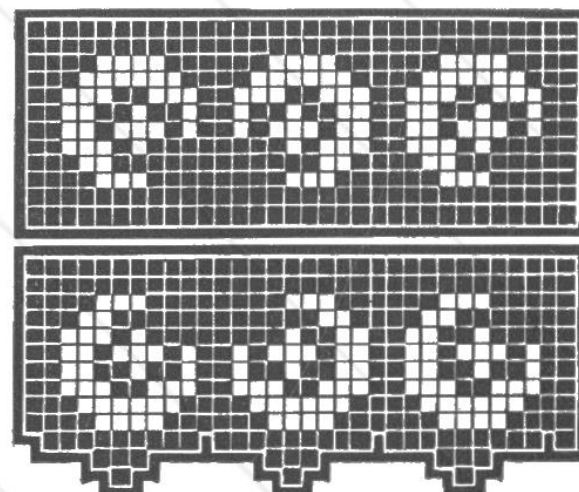
Row 5—* 3 s st over center of first long loop; shell, as in third row, in next loop; 3 s st in next loop. Repeat around, ending with sl st in first s st.

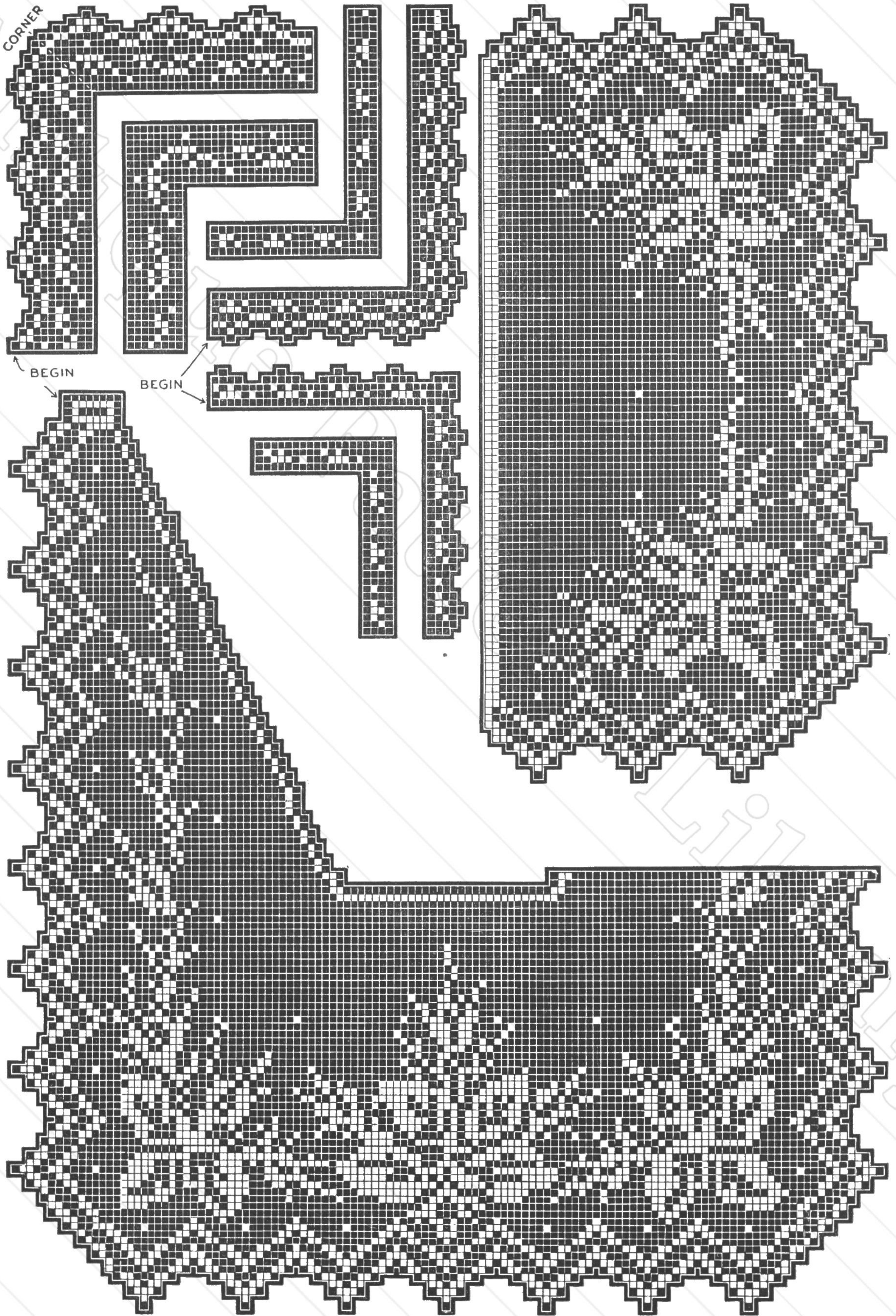
Row 6—* Ch 3, in shell work a shell of 3 tr, 7 ch, 3 tr, then ch 3, s st between groups of 3 s st. Repeat around, ending with sl st in first s st.

Row 7—Ch 3, * over 7 ch work 3 tr, 3 ch, repeated three times (four in all), ch 3, s st in s st. Repeat from beginning of row, ending with sl st in s st.

SIMITAR LACE AND INSERTION

This lace and insertion make up very prettily when worked with Clark's O. N. T. Mercerized Crochet, and may be used for towels, pillow slips, underwear, etc.





MOSS ROSE DESIGNS

18

MOSS ROSE DESIGNS

The full-page set of patterns opposite shows some very dainty and interesting designs, with the moss rose as the motif. The sailor collar is illustrated above and required two balls of Clark's O. N. T. Mercerized Crochet, size 80, being worked with Clark's O. N. T. Crochet Needle No. 14. It was begun at the lower edge, the first six rows of each of the scallops being worked first, then the rows were worked back and forth, entirely across the collar. Any of the other pieces of the set may be started in the same way. The detail of beginning the scallops is shown below and should render the following directions perfectly clear.

Begin with a ch of 7 and work a tr in first ch for 1 sp. Ch 3, turn, bl over sp, ch 10, turn.

Row 3—Wd sp, 2 bl, wd bl, wd sp, ch 3.

Row 4—2 bl, 1 sp, 2 bl, ch 10.

Row 5—Wd sp, 2 bl, 3 sp, 1 bl, wd bl, wd sp, ch 5.

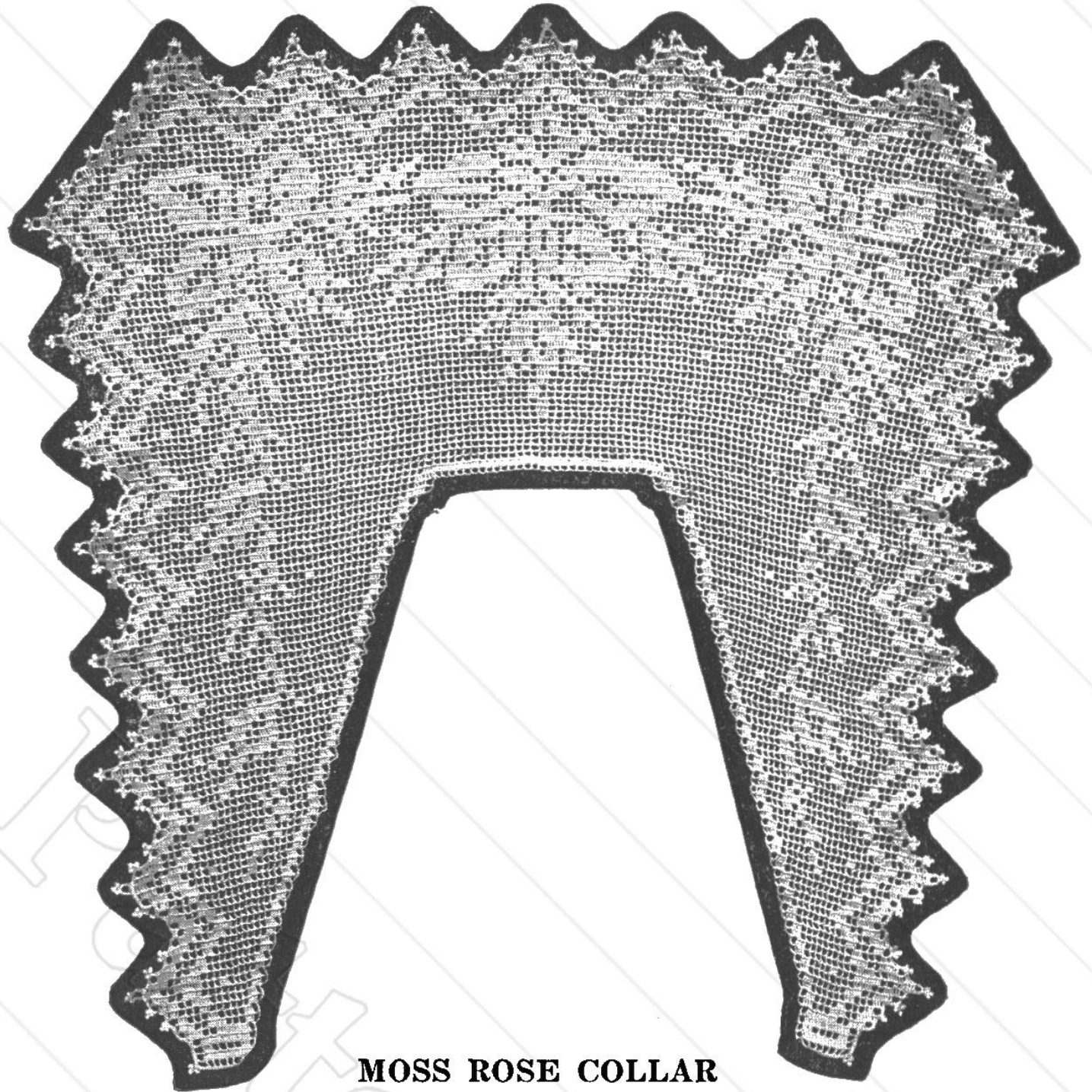
Row 6—Wd bl, * 1 bl, 3 sp, 1 bl, 3 sp, 1 bl, wd bl, wd sp, ch 42. This chain is used for sp and tr at right side of each row in second scallop.

Skip 7 ch, tr in next ch 3, 2 h tr (see page 4), on side of tr, sk 2 of 42 ch, draw thread through next ch, then through loops, 2 at a time, to complete half bl, ch 10.

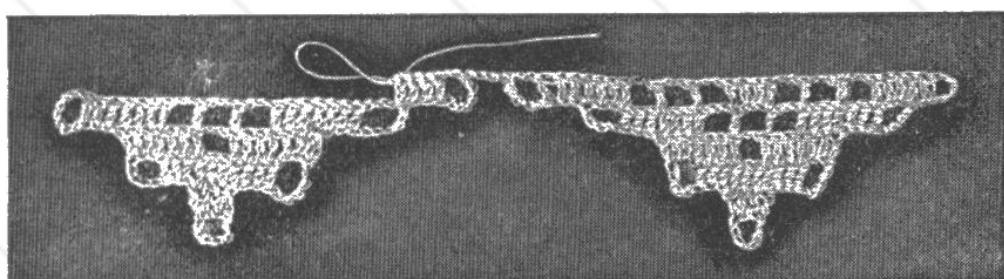
Row 3—Wd sp, 3 bl (last 3 tr on 42 ch), ch 2, sk 5 of 42 ch, sl st in next ch, ch 2, sk 2 of 42 ch, sl st in next ch, turn, work row 4 as above.

Row 5—As above, finishing on ch 42.

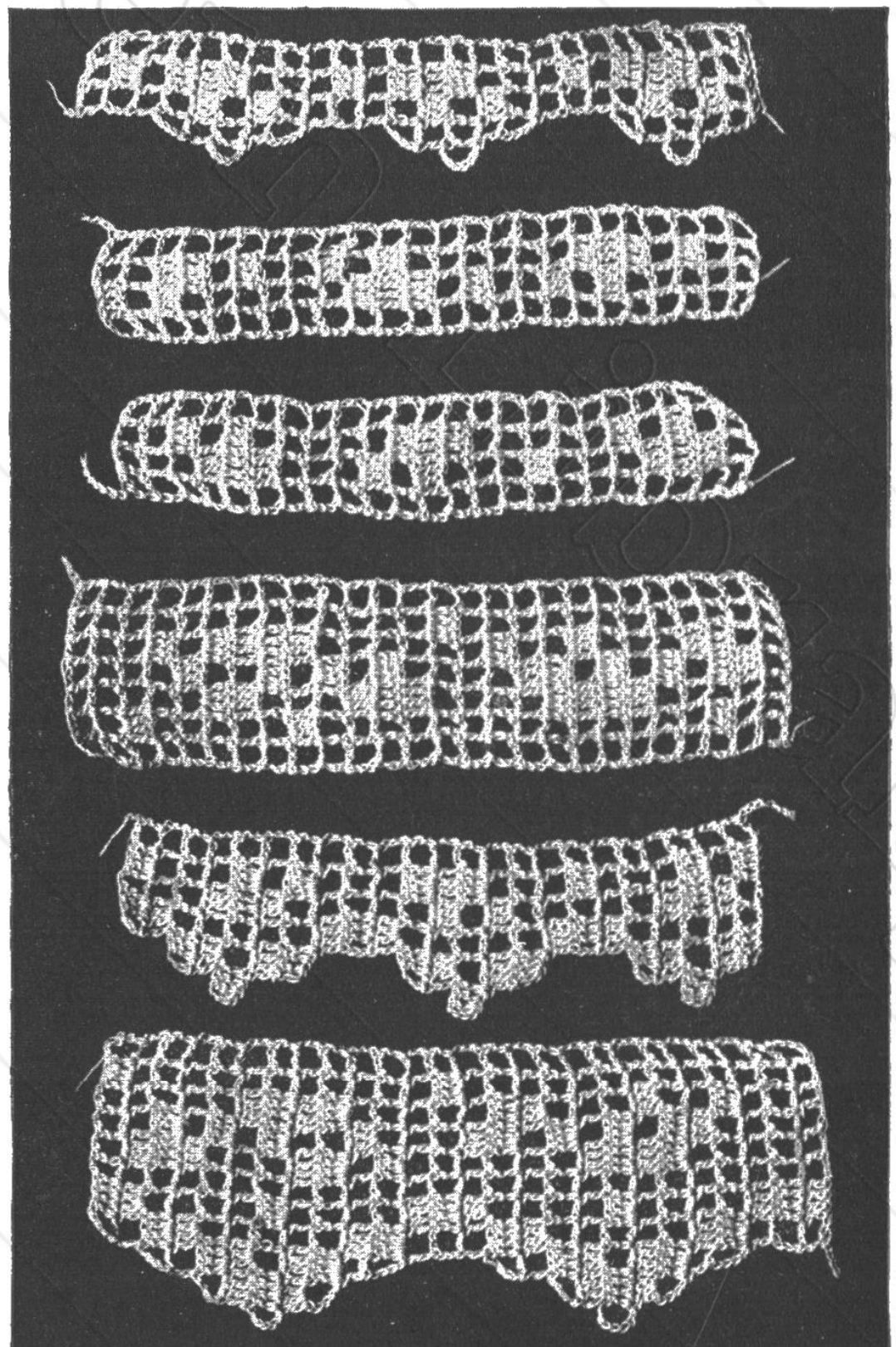
Row 6—Ch 3, 3 h tr on ch 42, sk 5 of ch 42, tr in next ch, take off all loops, 2 at a time (completing wd sp and wd bl), turn, and repeat from * in row 6 above until there are seven scallops in all; then turn and work back and forth across the entire collar, following the pattern.



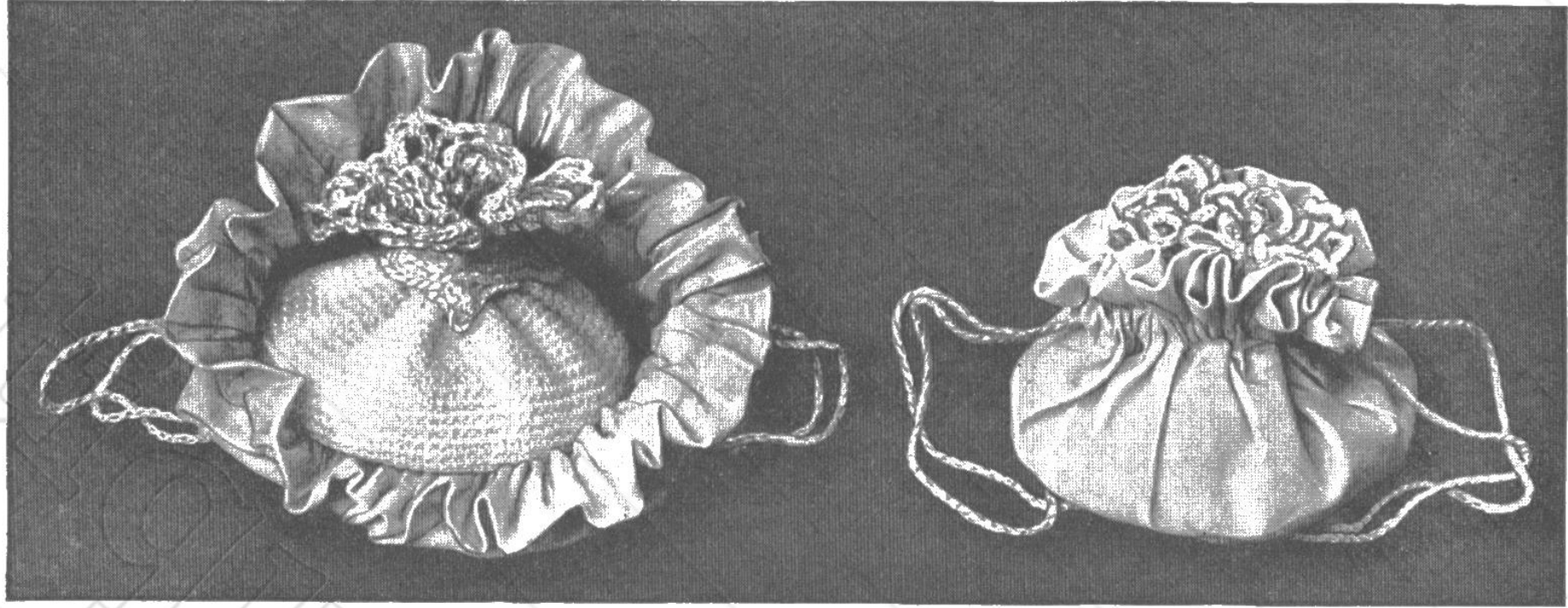
MOSS ROSE COLLAR



DETAIL OF BEGINNING SCALLOPS



NARROW MOSS ROSE LACES



PUFF BALL

Most acceptable and dainty gifts may be worked with Clark's O. N. T. Mercerized Crochet, size 50, in pink or any of the dainty colorings, and Clark's O. N. T. Crochet Needle, No. 11.

The little silk bag is an eight-inch circle, hemmed, run with a draw string (crocheted). It is filled with a puff crocheted with single stitch,

round and round to a two-inch circle, then work without increasing for half an inch, then decrease slightly for another half inch. Work two rows of spaces. * S st in sp, ch 5, repeat around for four rows. Crochet draw strings and run through the first row of sp. Fill a tiny square of cheese-cloth or chamois with powder or talc and inclose it in the crochet bag, then in the silk one.



MAID O' THE MIST BAG

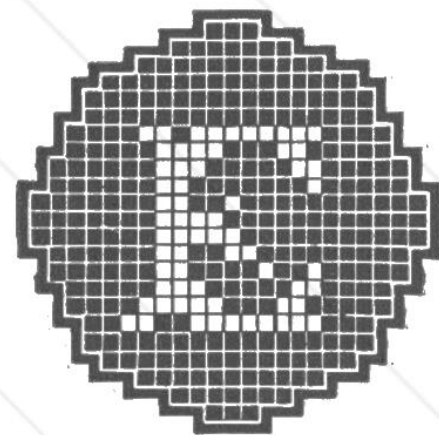
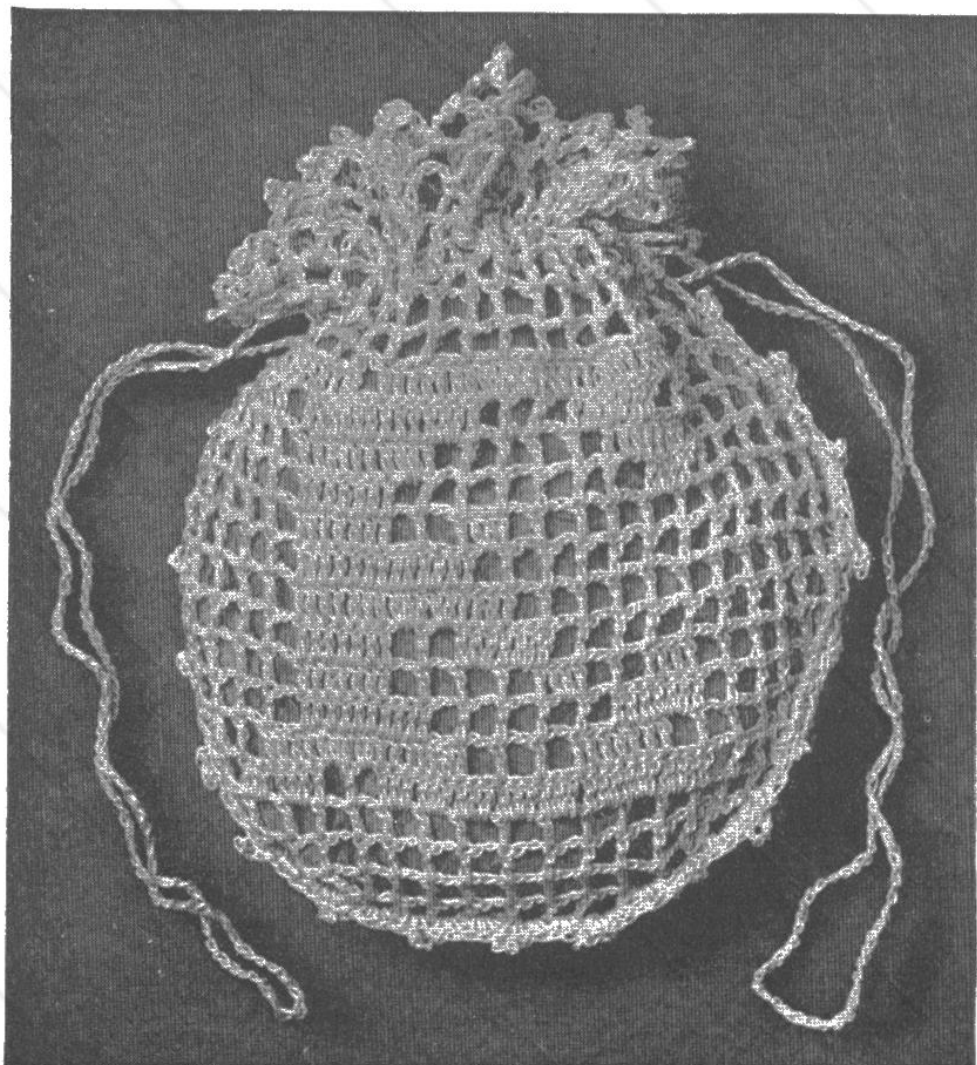
This bag is made of Clark's O. N. T. Mercerized Crochet, size 3, and Clark's O. N. T. Crochet Needle, No. 5 or 6, using the treble and hail stone stitches.

For one side, begin with a chain of 70, skip 3, and work 67 tr, ch 3, turn.

Row 1—3 tr, h s st, skip 2 tr, s st in next tr, 2 h s st, skip 5 tr, s st in next tr, 2 h s st, skip 5 tr, s st in next tr, h s st, skip 2 tr, repeat from beginning of row (making 4 tr in 4 tr) three times, then make 4 tr in 4 tr, ch 3, turn.

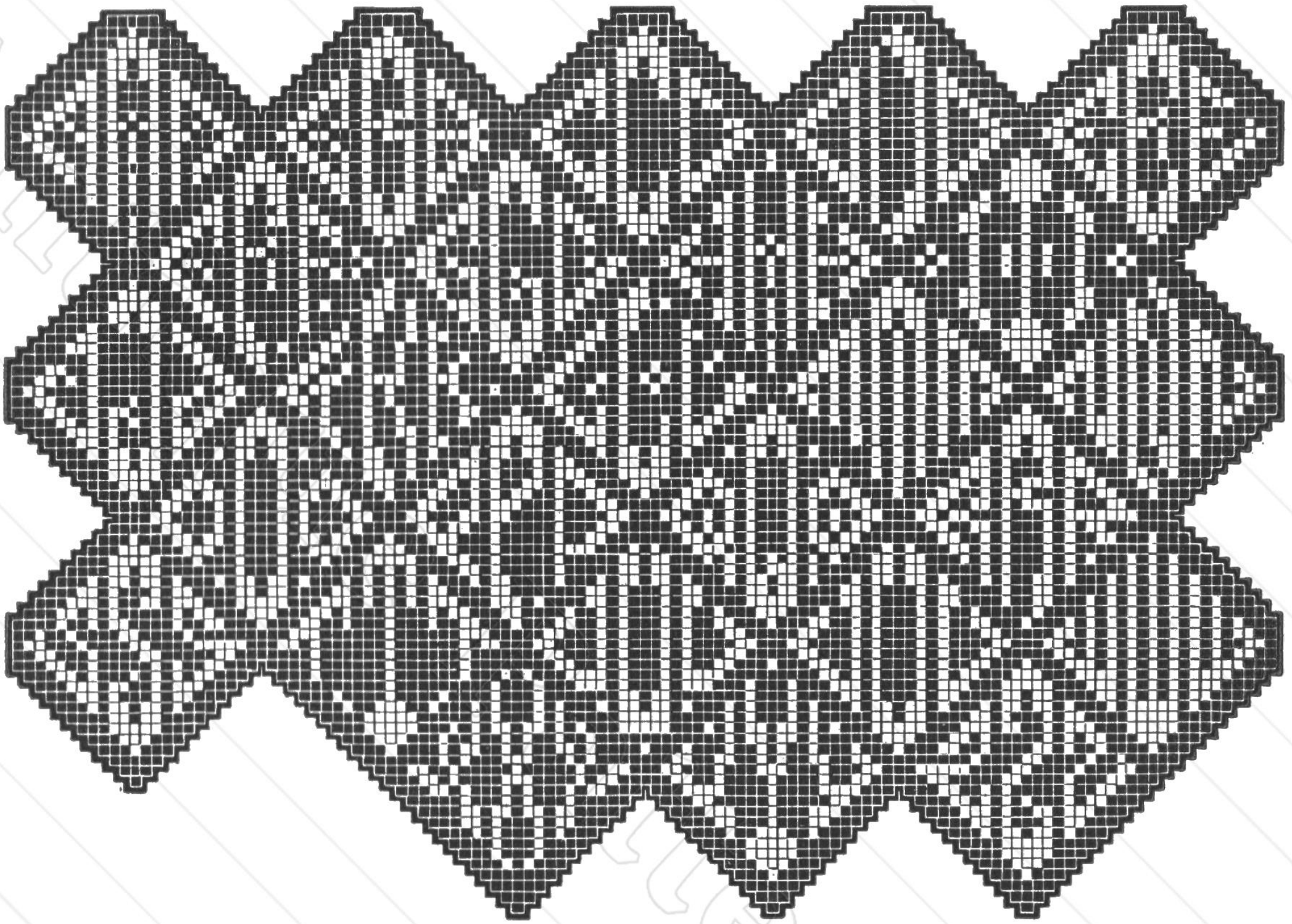
Row 2—Tr in each of next three tr, (4 tr in repeats), 2 h s st, s st each side of the s st between 2 h s st of previous row, 2 h s st, 2 s st as before, 2 h s st, 4 tr over 4 tr, ch 3, turn.

Repeat these two rows until there are 31 rows with h s st. Make a second side, lay them together, make 1 s st over the sides of the tr in 31st row, * 2 h s st, 2 s st over the tr in 30th row, repeat around bag. Make two handles of tr, finishing with tassels. Run through crocheted or ivory rings, attached near the top of the bag. Line with silk.



THE VANITY CASE

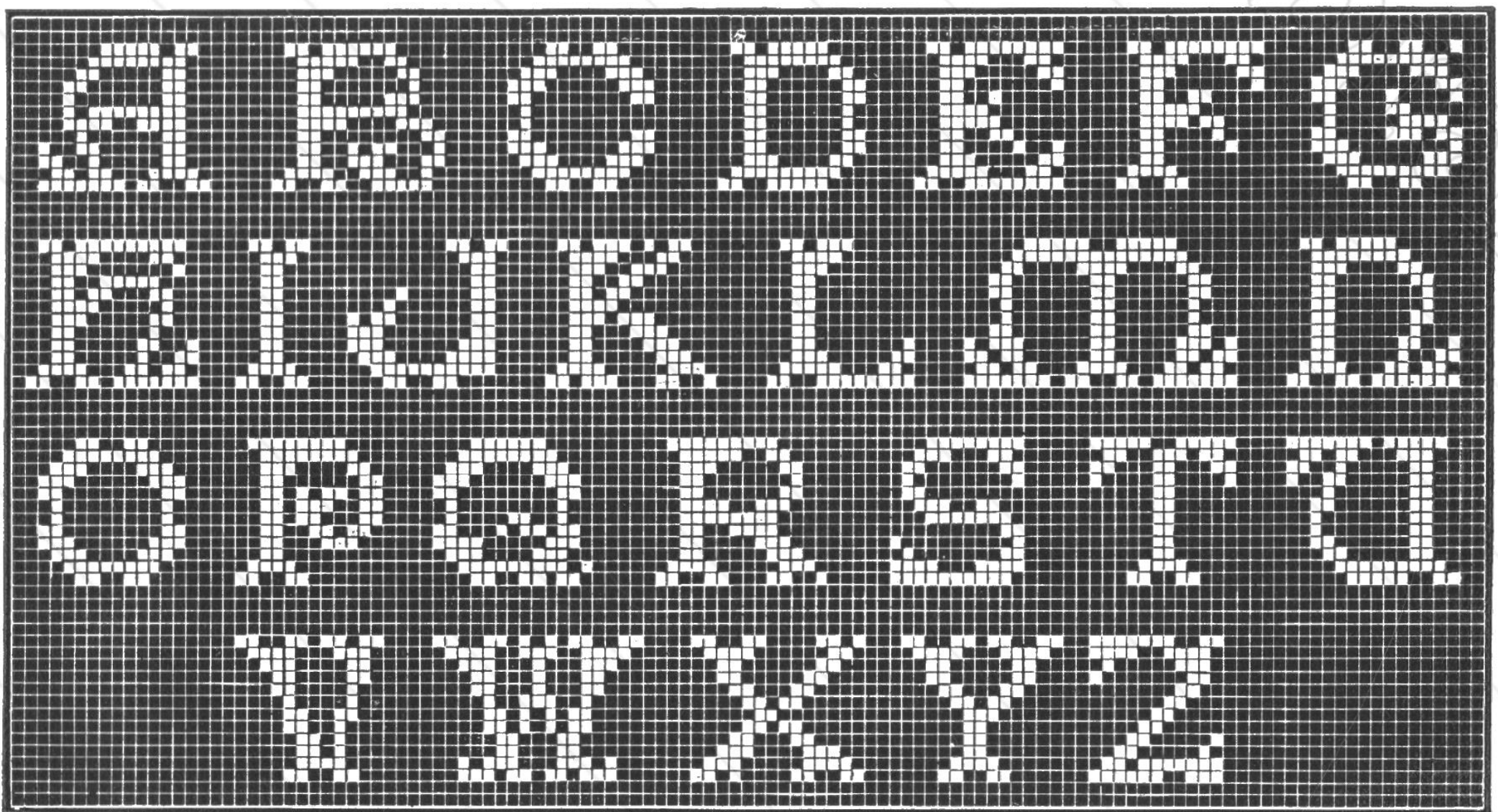
Make a four-inch circle of treble or single stitches, using Clark's O. N. T. Mercerized Crochet, in any dainty color, size 50, and Clark's O. N. T. Crochet Needle, No. 12. Then make a circular piece, with an initial (see detail). Crochet the two pieces together, with s st and picots, for about two-thirds of the opening. Around this work four or five rows of * s st in sp, ch 5, repeat. Draw up with crocheted draw strings and fit with tiny puff, power box, and mirror. Line it or not, as preferred.



CROCHETED MONOGRAMS

The monograms shown above may be crocheted in any of Clark's O. N. T. cottons that would be suitable for the desired purpose. For towels, sheets, pillow cases, etc., size 60, 70, or 80 in Clark's O. N. T. Mercerized Crochet would be best. For bedspread centers a coarser size is desirable, while for very fine articles size 100, or Clark's Spool Cotton, sizes 50 to 70, should be used. The middle letter is that of the last name

The alphabet below is quaint, yet easily read. It is suitable for any size cotton and may be worked into any article that permits of an initial or of two or three letters. Any of Clark's O. N. T. Cottons would work up attractively. An initial always gives an unmistakably individual touch to any gift.





Needlework—No. 1

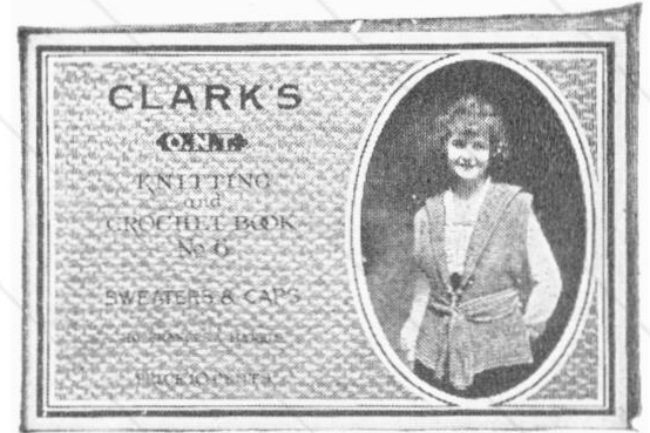
This book tells you plainly and by numerous illustrations of stitches and designs, how to sew and crochet, darn, knit and embroider. Especially suitable for teaching young people.

Price ~~15~~ **25 Cents**



Crochet Yokes—No. 5

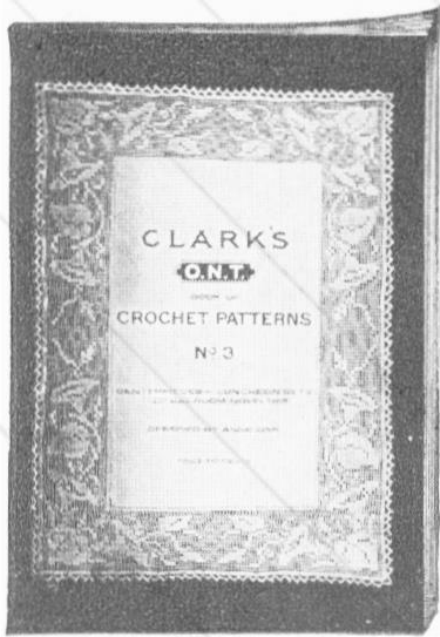
Contains about twenty of the daintiest, prettiest and most practical designs of yokes, also valuable directions for general crochet work—widening, narrowing, turning corners and joining invisibly. **Price 10 Cents**



Sweaters and Caps—No. 6

Profusely illustrated with new designs of sweaters, coatees, jackets, shawls, gloves, swagger cap and other garments, with explicit directions. Many of the articles are equally suitable for summer and winter wear.

Price 10 Cents



Crochet Patterns—No. 3

Contains numerous new designs of attractive articles for the home which appeal to all who crochet. The clear illustrations and comprehensive directions arouse fresh interest in crochet work.

Price 10 Cents



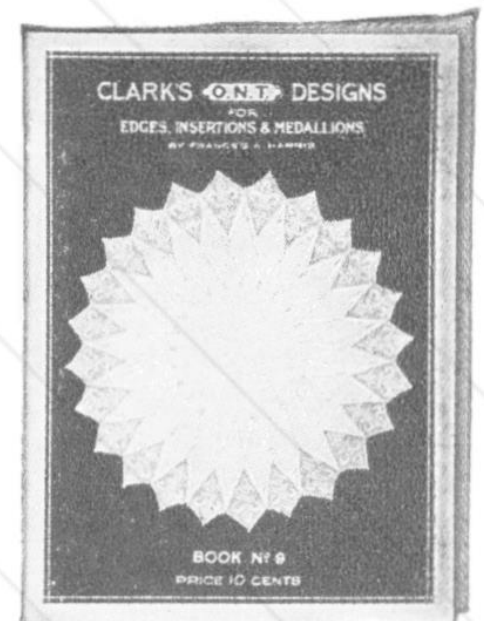
Blouses, Scarfs and Bags—No. 7

Contains a number of up-to-date designs which every lover of the art of crochet will have pleasure in reproducing, either for her personal use or for distribution as gifts. The filet blouses have a distinct charm of their own and are rapidly growing in favor. **Price 10 Cents**



Babies Wear—No. 8

Contains dainty, artistic designs of yokes, caps, sweaters, pillows, carriage robes and other articles, with unusually pleasing effects—just such things which every woman will delight in making and which will be cherished for a lifetime. **Price 10 Cents**



Edgings, Insertions and Medallions—No. 9

Patterns for edgings, insertions and medallions are always popular because of their general adaptability and because they are so frequently exchanged by those who crochet. Many of the designs may be reproduced as shown or may be rearranged to please the individual fancy. **Price 10 Cents**

BOOKS MAY BE PURCHASED FROM YOUR DEALER OR SENT POSTPAID ON RECEIPT OF PRICE IN CASH OR STAMPS BY THE SPOOL COTTON COMPANY, DEPT. A, 315 FOURTH AVE., NEW YORK

CLARK'S O.N.T. COTTONS
 MADE TO SUIT EVERY REQUIREMENT

The forms of Clark's O. N. T. Cottons shown below are popular everywhere. Each has its own characteristics and purposes.



PEARL BALLS

Soft, lustrous and obtainable in three sizes and many shades



MERCERIZED CROCHET

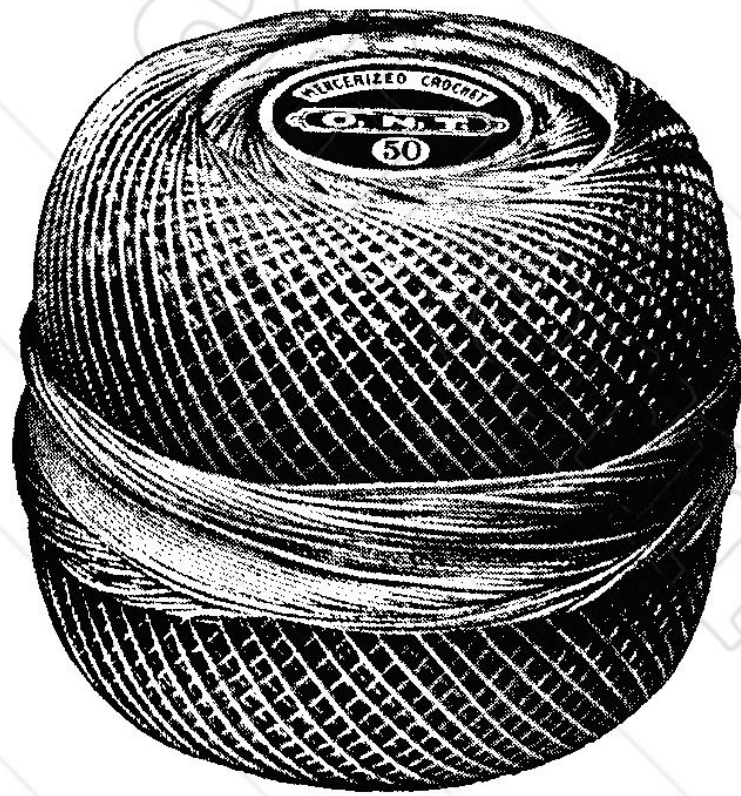
The perfect crochet cotton, of excellent lustre and superior finish



**"LUSTRE"
 100 YARDS**

Adapted for all kinds of crochet and for knitting and embroidery. Obtainable in many shades

CLARK'S  MERCERIZED CROCHET
EXCELLENT LUSTRE—SUPERIOR FINISH



White	- - -	Nos. 3 to 100	Beauty Pink	} Nos. 10, 30 & 50
Ecrú	- - -	Nos. 3 to 70	Blue	
Linen	- - -	Nos. 3 to 50	Lavender	
Other Popular Colors, Nos. 30 & 50				

