

BOOK No. 278

Creative Commons 4.0 NC SA BY FREE DISTRIBUTION ONLY - NOT FOR SALE

Crochet

Money-Makers

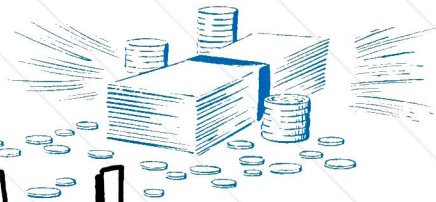
FOR YOUR BAZAAR

10¢



J. & P. COATS • CLARK'S **O.N.T.**

Crochet these Money-Makers FOR YOUR BAZAAR



"The busiest booth at the fair!" We know the items in this book are just the things to appeal to bazaar-buyers . . . and they cost so little to make that a selling price of a dollar will bring a pretty profit. Use J. & P. COATS or CLARK'S O.N.T. THREADS, and your customers will come back for more, year after year!



Brother and Sister Dolls

S-152

Illustrated on Front Cover

MATERIALS:

CLARK'S O.N.T. BEST SIX CORD MERCERIZED CROCHET, Art B.4, Size 30: 2 balls of White and 3 balls of No. 76 China Blue; or

J. & P. Coats Best Six Cord Mercerized Crochet, Art. A.104, Size 30: 1 ball each of White and No. 108 Steel Blue; or

Clark's Big Ball Mercerized Crochet, Art. B.34, Size 30: 1 ball each of White and No. 108 Steel Blue.

Milwards Steel Crochet Hook No. 10.

A boy and girl doll 6 inches tall. 2 snap fasteners and 2 tiny white buttons.

GIRL DOLL—Dress . . . Starting at top with China Blue make a chain $\frac{1}{4}$ inch longer than necessary to reach around doll at underarm. **1st row:** Sc in 2nd ch from hook and in each ch across, having a number of sc's divisible by 9. Ch 4, turn. **2nd row:** Skip first sc, tr in each sc across. Ch 4, turn. **3rd and 4th rows:** Skip first tr, tr in each tr across. Ch 4, turn. Do not ch 4 and turn at end of 4th row. Join with sl st to top of ch-4 at beginning of row.

Now work skirt in rnds as follows: **1st rnd:** Ch 4, tr in next 7 tr, * 5 tr in next tr, tr in next 8 tr. Repeat from * around. Join. **2nd rnd:** Ch 4, tr in next 7 tr, * 2 tr in each of next 5 tr, tr in next 8 tr. Repeat from * around. Join. **3rd rnd:** Ch 4, tr in

next 7 tr, * 2 tr in each of next 10 tr, tr in next 8 tr. Repeat from * around. Join. **4th rnd:** Ch 4, tr in each tr around. Join and break off.

TRIM . . . Holding White thread under skirt draw a loop through sp between any 2 tr on 3rd rnd of skirt, * insert hook between this and next tr and draw a loop through the loop on hook, making a sl st. Repeat from * around. Join and break off. Work over 4th rnd in same way.

COLLAR . . . With White make a chain long enough to reach around back of neck and to overlap $\frac{1}{4}$ inch over each side of dress at front. **1st row:** Sc in 2nd ch from hook and in each ch across. Ch 1, turn. Mark center of row. **2nd row:** Sc in first sc, half dc in next sc, dc in next sc, tr in each sc to within 5 sc of center mark, 2 tr in each of next 10 sc, tr in each remaining sc to within last 3 sc, dc in next sc, half dc in next sc, sc in next sc. Turn. **3rd row:** Sl st in first 2 sts, sc in next st, half dc in next st, dc in each st to center, 3 dc in center st, dc in each remaining st across to within last 4 sts, half dc in next st, sc in next st, sl st in next st. Turn. **4th row:** Sl st in first 2 sts, sc in next st, half dc in next st, * dc in next 3 sts, 2 dc in next st. Repeat from * across to within last 4 sts, half dc in next st, sc in next st, sl st in next st. Break off. Sew a button to each side of dress front. Sew snap fastener to back, slip collar in place over buttons.

SASH . . . Cut 5 strands of Blue and 10 strands of White each 12 inches long. Divide White strands into 2 sets of 5 strands and make a braid. Knot ends securely $\frac{1}{2}$ inch from each end, unravel strands to make tassel.

HAT . . . Starting at center with White, ch 5. **1st rnd:** 20 tr in 5th ch from hook. Join to top of starting chain. **2nd rnd:** Ch 4, tr in same place as sl st, 2 tr in each tr around. Join. **3rd rnd:** Ch 4, tr in same place as sl st, * tr in next tr, 2 tr in next tr. Repeat from * around. Join. **4th and 5th rnds:** Ch 4, tr in each tr around. Join. Break off at end of 5th rnd.

BRIM . . . **1st rnd:** Attach Blue to same place as sl st, sc in same place, sc in next 7 tr, half dc in next 6 tr, 2 dc in each of next 8 tr, 2 tr in each of next 19 tr, 2 dc in each of next 8 tr, half dc in next 6 tr, sc in each remaining tr. Join. **2nd rnd:** Sc in each sc, half dc in each half dc, dc in each dc, tr in each tr. Join and break off.

BAND . . . Cut 5 strands of Blue and 10 strands of White, each 7 inches long. Make a braid as before. Sew around hat.

PANTIES . . . Starting at top with White make a chain long enough to reach around waist. Work as for top of dress until 4 rnds have been completed. Break off. Sew narrow ends together. Fold in half, attach White to

Continued on page 3

S-152 *Continued from page 2*

center, (ch 8, sl st in center on opposite side) 3 times. Break off.

Starch dress and hat lightly and press.

BOY DOLL—Pants . . . Starting at top with Blue make a chain long enough to reach around waist. Work as for top of Dress until 4 rows have been completed. Break off. Sew narrow ends together (center back). **Next rnd:** Attach Blue to lower edge and sc in each st around. Join. **Following rnd:** Sc in same place as sl st and in each sc around. Join and break off.

TOP . . . 1st rnd: Attach White to center back of top, ch 3, dc in each st around. Join. Insert hook in top of ch 3, drop White, draw a loop of Blue through, thus changing color (always change color in this manner). **2nd rnd:** Sc in same place, sc in each dc around, drop Blue, pick up White. **3rd rnd:** Ch 3, dc in each dc around. Drop White, pick up Blue. Repeat 2nd and 3rd rnds alternately until 6 rnds have been completed. **7th rnd:** Mark off 17 sts across center front, sc in each st to first marker, half dc in next st, dc in next 15 sts, half dc in next st, sc in each remaining st around. Break off White, pick up Blue. **8th rnd:** Sc in each st around. Join. **9th rnd:** Sc in each sc to within 17 sc at front, make a chain 1 inch long, sc in 2nd ch from hook and in each ch across, sc in same sc on suit, sc in next 17 sc across front, make a chain 1 inch long, sc in 2nd ch from hook and in each ch across, sc in same sc on suit, sc in each remaining sc around. Join and break off. Attach Blue to center back at bottom of pants, ch 3, sl st in center front. Break off.

JACKET . . . Starting at lower back with Blue, ch 25. **1st row:** Sc in 2nd ch from hook and in each ch across. Ch 4, turn. **2nd row:** Skip first sc, tr in each sc across. Ch 4, turn. **3rd and 4th rows:** Skip first tr, tr in each tr across, tr in top of turning chain. Ch 4, turn. At end of 4th row, ch 10 to turn for sleeve. Attach a separate piece of Blue to opposite side of row, ch 7 for other sleeve. Break off. **5th row:** Pick up main thread, tr in 5th ch from hook and in each ch across, tr in each tr and in each ch across other sleeve. Ch 4, turn. **6th row:** Skip first tr, tr in next 14 tr, ch 7 for neck, turn. **8th row:** Tr in 5th ch from hook, tr in next 2 ch and in each tr across, tr in top of turning chain. Ch 4, turn. **9th row:** Skip first tr, tr in each tr across, tr in top of turning chain. Ch 4, turn. **10th row:** Skip first tr, tr in next 11 tr. Ch 4, turn. **11th and 12th rows:** Skip first tr, tr in each tr across, tr in top of turning chain. Ch 4, turn. Ch 1 to turn at end of 12th row. **13th row:** Sc in each tr across. Break off. Attach thread to opposite side and work other front to correspond.

Sew side and sleeve seams. Attach White to edge of jacket and sc closely around. Join and break off. Complete sleeves in same way.

CAP . . . Starting at center with a double strand of White, ch 7. Join with sl st to form ring. **1st rnd:** 9 sc in ring. Join. **2nd rnd:** Ch 3, dc in same place as sl st, 2 dc in back loop of each sc around. Join. **3rd rnd:** Ch 3, 2 dc in next dc (1 dc increased), thread over, insert hook from front around bar of next dc, thread over and draw loop through, complete a dc (a raised dc made), * dc in next dc, 2 dc in next dc, make a raised dc around bar of next dc. Repeat from * around. Join (6 raised dc). **4th rnd:** Ch 3, 2 dc in each of next 2 dc, * make a raised dc over next raised dc, 2 dc in next dc, dc in next dc, 2 dc in next dc. Repeat from * around. Join. **5th and 6th**

rnds: Ch 3, dc in each dc, making a raised dc over each raised dc and increasing 3 dc in each section around. Join. **7th rnd:** Ch 3, dc in back loop of each dc around. Join. **8th rnd:** Ch 3, dc in each dc around. Join. **9th rnd:** Sc in same place as sl st, sc in each dc, decreasing 18 sc evenly around—*10 dec 1 sc, work off 2 sc as 1 sc.* **10th rnd:** Sc in same place as sl st, sc in next 4 sc, (dec 1 sc, sc in next 3 sc) 3 times; half dc in next sc, dc in next 22 sc, half dc in next sc (peak), (dec 1 sc, sc in next 3 sc) 3 times. Join. **11th rnd:** Sc in each st around. Join and break off. Starch cap heavily and press.

Sewing Susan

S-140

Illustrated on Front Cover

MATERIALS:

J. & P. COATS or CLARK'S O.N.T. PEARL COTTON, Art. A. or B.19, Size 5: 2 balls of No. 48 Hunter's Green; 1 ball each of No. 65 Beauty Pink and No. 12 Black; or

J. & P. Coats "Knit-Cro-Sheen," Art. A.64: 1 ball each of No. 48 Hunter's Green, No. 65 Beauty Pink and No. 12 Black; or

Clark's O.N.T. Mercerized Bedspread Cotton, Art. B.504: 1 ball each of 3 colors of your own choice.

Milwards Steel Crochet Hook No. 7.

A round pincushion, 3 inches in diameter.

A small button mold.

J. & P. Coats or Clark's O.N.T. Mercerized Sewing Thread, Art. A. or B.3: 8 spools of assorted colors.

BASKET . . . Starting at center with Hunter's Green, ch 4. **1st rnd:** 14 dc in 4th ch from hook. Join to top of starting chain. **2nd rnd:** Ch 3, dc in same place as sl st, 2 dc in each dc around. Join. **3rd rnd:** Ch 3, dc in same place as sl st (1 dc increased), * dc in next dc, 2 dc in next dc. Repeat from * around. Join. Dc in each dc around, increasing 15 dc evenly on each rnd until piece measures 4¼ inches in diameter. **Next rnd:** Ch 3, dc in front loop of each dc around, increasing 15 dc on rnd. Join. Continue increasing 15 dc on each rnd until piece measures 7¼ inches in diameter. Join and break off. Make another piece the same way.

With wrong sides facing, sew pieces together by joining back loops of dc's where front loops were previously worked, leaving a 4-inch opening. Cut 2 pieces of cardboard each 4¼ inches in diameter, insert cardboard and sew up opening.

PINCUSHION . . . Starting at center with Beauty Pink, ch 2. **1st rnd:** 7 sc in 2nd ch from hook. Hereafter pick up back loop only. **2nd rnd:** 2 sc in each sc around. **3rd rnd:** * 2 sc in next sc (1 sc increased), sc in next sc. Repeat from * around. **4th rnd:** * 2 sc in next sc, sc in next 2 sc. Repeat from * around. Inc 7 sc evenly on each rnd until piece measures 3¼ inches in diameter. Join and break off. Make another piece the same way.

With wrong side facing, sew pieces together, leaving opening large enough to insert pincushion. Insert pincushion and sew up opening. With Black embroider lines around pincushion.

BUTTON . . . With Black, ch 2, work as for pincushion until piece measures same as button mold, then * work off 2 sc as 1 sc (1 sc decreased), sc in next sc. Repeat from * around until 6 sc have been decreased. Insert button mold and continue decreasing until all sc's have been worked off. Break off.

Sew button to center of pincushion. Sew pincushion to center of basket. With front of basket facing, attach Green to back piece and sc in each dc around. Join and break off. Attach Pink to first sc, sc in each sc around. Join and break off. Mark both pieces of basket into 8 sections. Attach Pink to first marker and working through both thicknesses to join, make sc in same sc, * sc in each st across front to next marker, sc through both thicknesses. Repeat from * around. Join and break off.

CORD . . . Cut 6 strands of Black, each 3 yards long. Twist these strands tightly, then double and give them a twist in the opposite direction, knot ends securely.

Place a spool of thread in each section of basket, draw cord through spools and tie ends securely, drawing sides of basket into place. Tie into a bow.

Checkerboard Apron

S-139



Illustrated
on Front Cover

MATERIALS:

J. & P. COATS BEST SIX CORD MERCERIZED CROCHET, Art. A.104, Size 30: 3 balls of White and 2 balls of No. 126 Spanish Red; or

Clark's O.N.T. Best Six Cord Mercerized Crochet, Art. B.4, Size 30: 8 balls of White and 5 balls of No. 126 Spanish Red; or

Clark's Big Ball Mercerized Crochet, Art. B.34, Size 30: 3 balls of White and 2 balls of No. 126 Spanish Red.

Milwards Steel Crochet Hook No. 10.

1/4 yard of white organdy, 36 inches wide.

SKIRT . . . Starting at the waist edge with Spanish Red make a chain 30 inches long. **1st row:** Tr in 5th ch from hook and in the next 3 ch, * skip next 3 ch, sc in next ch, ch 4, tr in next 4 ch. Repeat from * across until piece measures 16 inches, ending with sc. Break off. Cut off remaining chain. **2nd row:** With wrong side of work facing, attach White to last sc made, ch 4, 4 tr in same sc, * sc over next ch-4 bar, ch 4, 3 tr over same bar, tr in next sc. Repeat from * across, ending with sc over last bar. Break off. **3rd row:** Attach Red to last sc made and work as for 2nd row. Work in pattern alternating colors until piece measures 13 inches from starting chain. Break off.

WAISTBAND . . . **1st row:** With right side of first row facing, attach White to tip of first point, sc in same place, * ch 3, sc in tip of next point. Repeat from * across. Ch 1, turn. **2nd row:** Sc in first sc, * 3 sc in next sp, sc in next sc. Repeat from * across. Ch 3, turn. **3rd row:** Skip first sc, dc in each sc across. Ch 3, turn. **4th and 5th rows:** Skip first dc, dc in each dc across, dc in top of turning chain. Ch 3, turn. At end of 5th row, ch 1, turn. **6th row:** Sc in first dc and in each dc across, sc in top of turning chain. Break off.

BIB . . . **1st row:** Attach Red to first sc made on last row, * ch 4, 4 tr in same sc, skip next 3 sc, sc in next sc. Repeat from * across, ending with sc in last sc. Break off. Attach White to last sc made and work in pattern as for Skirt until Bib measures 3 inches. Break off.

RUFFLE . . . **1st row:** Attach White to side of Skirt at waistband, sc closely

around skirt edge to other side. Ch 5, turn. **2nd row:** Skip first 2 sc, * sc in next sc, ch 5, skip next sc. Repeat from * across. Ch 6, turn. **3rd and 4th rows:** Sc in first loop, * ch 6, sc in next loop. Repeat from * across. Ch 6, turn. At end of 4th row, ch 7, turn. **5th to 10th rows incl:** Work in pattern making 2 rows each of ch-7, ch-8 and ch-9 loops. Break off at end of 10th row.

EDGING . . . Attach Red to first row of waistband, * ch 4, 3 tr in next loop, tr in next sc, sc in next loop. Repeat from * around ruffle to other side of waistband. Sl st in first row of band. Break off.

TIE (Make 2) . . . Cut an organdy strip 3 1/2 x 26 inches. Make a narrow hem all around. Gather one end to fit waistband and sew in place.

TOP . . . Work exactly as for Bottom Sole.

BOTTOM HEEL PIECE . . . With double strand of Blue, ch 14. **1st row:** Sc in 2nd ch from hook, sc in each ch across, 3 sc in last ch. Working along opposite side of starting chain make sc in each ch across. Ch 1, turn. **2nd, 3rd and 4th rows:** Sc in each sc, increasing 3 sc evenly across curved end. Ch 1, turn. **5th row:** Sl st in each st across. Break off.

TOP HEEL PIECE . . . With double strand of Blue, ch 9. Work as for Bottom Heel Piece.

Sew heel pieces together, catching only 1 loop on the edge of each piece. Cut a piece of cardboard slightly smaller than Bottom Sole. Sew joined heel pieces in place on Bottom Sole, having cardboard between. Sew Top Sole in place.

INSTEP . . . Starting at side with Tangerine, chain

26 sts	26 sts	32 sts
--------	--------	--------

1st row: Sc in 2nd ch from hook and in each ch across. Ch 3, turn. **2nd row:** 2 dc in first sc (half shell made), * skip 2 sc, sc in next sc, skip 2 sc, 5 dc in next sc (shell made). Repeat from * across, ending with 3 dc in last sc. Chain

20 sts	20 sts	25 sts
--------	--------	--------

Turn. Sl st in top of turning chain at opposite end of row. Turn. **Next row:** Sc in each ch across. Break off.

To Shape Bottom: **1st row:** Working along opposite side of starting chain, attach Tangerine to

8th ch	8th ch	11th ch
from end of row, sc in same ch and in next	7 ch	7 ch
	10 ch	10 ch

Ch 1, turn.

2nd row: Sc in each sc across, sc in next 3 ch on starting chain. Turn. **3rd row:** Sc in each sc across. Now sc closely around outer edges. Join and break off. **On large size:** Do not break off but make sc in each sc around. Join and break off.

Attach gold metallic thread to first free dc on first shell, sc in same place, sc in each st across shells. Mark off center ch of foundation chain above shells, sc in each st to center ch, sc in center ch, ch 8, sl st in center st of first full shell, make 8 sc over ch-8 just made, sc in same place as last sc on foundation chain, (ch 8, sc in center st of next shell, 8 sc over ch-8 just made, sc in same st on foundation chain) twice; sc in each remaining st around. Join and break off. Make another piece the same way.

Sew rounded sides together, leaving 1 inch free on each side of front for toe opening and joining 3 inches across top. Cut a piece of felt slightly smaller than instep. Sew in place for lining.

BACK PIECE . . . Starting at base with Tangerine, chain

50 sts	50 sts	55 sts
--------	--------	--------

1st row: Sc in 2nd ch from hook and in each ch across. Ch 1, turn. **2nd**

Continued on page 5

Television Slippers

S-153



Illustrated on Back Cover

MATERIALS:

CHADWICK'S RED HEART KNITTING WORSTED, 4 Ply, Art. E.232: 4 skeins (1 oz. "Tangle-proof" pull-out skeins) of No. 848 Skipper Blue and Art. E.245: 5 balls (1/3 oz. balls) of No. 253 Tangerine for Small and Medium Sizes; 6 skeins of Skipper Blue and 7 balls of Tangerine for Large Size.

Clark's O.N.T. Plastic Crochet Hook No. 5.

1 spool of gold metallic thread.

A piece of blue felt about 12 inches square.

GAUGE: Sole—4 sts make 1 inch; 4 sc-rnds make 1 inch. Upper—1 shell makes 1 inch; 1 shell row and 1 sc row make 1 inch.

Sizes	Small	Medium	Large
-------	-------	--------	-------

SOLE—**Bottom** . . . Starting at center with double strand of Skipper Blue, chain loosely **22 sts** **26 sts** **30 sts**

1st rnd: 3 sc in 2nd ch from hook, sc in next	11 ch	13 ch	15 ch
dc in next	8 ch	10 ch	12 ch
make 7 dc in last ch (toe end).			

Working along opposite side of starting chain make dc in next

	8 ch	10 ch	12 ch
sc in next	11 ch	13 ch	15 ch
2 sc in same place as first 3 sc.			

2nd, 3rd and 4th rnds: Sc in each st around, increasing 3 sc evenly across heel and 5 sc evenly across toe—to inc 1 sc, make 2 sc in 1 sc. **5th rnd:** Sl st in each st around. Join and break off.

S-153*Continued from page 4*

row: Sc in first sc, * skip 2 sc, shell in next sc, skip 2 sc, sc in next sc. Repeat from * across. Turn. **3rd row:** Sl st to center dc of first shell, sc in same place as last sl st, * shell in next sc, sc in center dc of next shell. Repeat from * across. Turn. **4th, 5th and 6th rows:** Repeat 3rd row. Do not turn at end of 6th row but sc closely around. Join and break off.

TIE . . . Mark off 20 sc at center of back. Attach Tangerine to last sc, make a chain 5 inches long. Break off. Attach Tangerine to first sc, make a chain 5 inches long. Turn. **1st row:** Sc in 2nd ch from hook and in each ch across, sc in each sc across back, sc in each remaining chain. Ch 1, turn. **2nd row:** Sc in each sc across. Break off.

Sew Instep and Back Piece to Sole. Make another slipper the same way.

Johnny-on-the-Spot**S-151**

Illustrated
on Back Cover

MATERIALS:

J. & P. COATS or CLARK'S O.N.T. PEARL COTTON, Art. A. or B.19, Size 5: 2 balls each of No. 48 Hunter's Green and No. 108 Steel Blue and 1 ball each of No. 11 Orange and No. 61 Ecru or No. 1 White; or

J. & P. Coats "Knit-Cro-Sheen," Art. A.64: 1 ball each of No. 48 Hunter's Green, No. 70 Blue Jewel, No. 43 Dk. Yellow and No. 61 Ecru.

Milwards Steel Crochet Hook No. 7. Clark's Mile-End Nylon Sewing Thread, Art. C.53: 4 spools of desired colors; and

J. & P. Coats Darning and Mending Packet, Art. A.227 or A.227P: 2 balls of desired colors; and

J. & P. Coats or Clark's O.N.T. Six Strand Embroidery Floss, Art. A. or B.11, 6 skeins of assorted colors.

Scraps of Black and Red embroidery floss for hair and mouth.

2 tiny white buttons for eyes.

4 small blue buttons.

A thimble.

¾ yard of white ribbon, ¼ inch wide.

FRONT OF BODY—Shirt . . . Starting at waist with Hunter's Green, ch 22. **1st row:** Dc in 4th ch from hook and in each ch across. Ch 3, turn. **2nd row:** Dc in first dc (1 dc increased), dc in each dc across, 2 dc in top of turning chain (another dc increased). Ch 3, turn. **3rd and 4th**

rows: Skip first dc, dc in each dc across, dc in top of turning chain. Ch 3, turn. At end of 4th row, ch 30 to turn for sleeve. Attach a separate thread to opposite end of row and ch 28 for other sleeve. Break off. **5th row:** Pick up main thread, dc in 4th ch from hook and in each ch across sleeve, 3 dc in next dc, dc in each dc across, 3 dc in top of turning chain, dc in each ch across other sleeve. Ch 3, turn. **6th row:** Skip first dc, dc in each dc across, making 3 dc in center dc of each 3-dc group, dc in top of turning chain. Ch 3, turn. **7th row:** Skip first dc, dc in each dc across, dc in top of turning chain. Ch 3, turn. **8th row:** Skip first dc, dc in each dc across, making 3 dc in dc above previous 3-dc groups. Ch 3, turn. **9th row:** Skip first dc, dc in each dc across to center dc of 3-dc group, 3 dc in center dc, tr in each dc across to center dc of next 3-dc group, 3 dc in center dc, dc in each remaining dc across, dc in top of turning chain. Ch 1, turn. **10th row:** Sc in first dc, sc in each dc across to 3-dc group, sc in next dc, half dc in next dc, dc in next dc, dc in each tr across, dc in next dc, half dc in next dc, sc in next dc and in each remaining dc across, sc in top of turning chain.

CUFF . . . Now working across end of sleeve, make 12 sc closely across. Ch 1, turn. **Next row:** Sc in first sc, half dc in next sc, dc in next sc, tr in next 2 sc, d tr in next 2 sc, tr in next 2 sc, dc in next sc, half dc in next sc, sc in next sc. Break off.

Attach thread to other sleeve and complete to correspond.

HEAD . . . Mark off center 9 dc on last row of Shirt, attach Ecru to first dc marked. **1st row:** Ch 3, dc in same dc, dc in next 7 dc, 2 dc in next dc. Ch 3, turn. **2nd row:** 2 dc in first dc, dc in each dc across, 3 dc in top of turning chain. Ch 3, turn. **3rd row:** Dc in first dc, dc in each dc across, 2 dc in top of turning chain. Ch 3, turn. **4th, 5th and 6th rows:** Skip first dc, dc in each dc across, dc in top of turning chain. Ch 3, turn. **7th row:** Skip first dc, dc in each dc across, ch 3, sl st in top of turning chain.

EAR . . . Working along side of Head make sc in end dc of last row, 3 dc in end dc of next row, sc in end dc of next row. Break off. Attach thread to opposite side of Head and make another Ear the same way.

BACK OF BODY . . . Work exactly as for Front.

Sew front and back pieces together, leaving opening at top of head and both sleeves.

PANTS . . . Starting at waist with Steel Blue, ch 23. **1st row:** Dc in 4th ch from hook and in each ch across. Ch 3, turn. **2nd and 3rd rows:** Skip first dc, dc in each dc across, dc in top of turning chain. Ch 3, turn. **4th, 5th and 6th rows:** Work in pattern, increasing 1 dc at both ends of each row. **7th row:** Work in pattern without increasing. **8th to 11th rows incl:** Inc 1 dc at both ends of each row. Work without increasing until piece measures 6¼ inches. Ch 9, turn.

FRINGE . . . * Dc in 4th ch from hook, dc in each ch across, skip next dc, sl st in next 2 dc, ch 9. Repeat from * across. Break off. Fold lengthwise and sew up side seam. Make another piece the same way. Starting at waist, sew 2 inches of folded edges together to form pants. Sew pants to shirt. Stuff chest and head softly with cotton.

HAT . . . 1st rnd: Attach Orange to first dc on back of head and, working around head, ch 3, dc in each dc around. Join to top of ch-3. **2nd, 3rd and 4th rnds:** Ch 3, dc in each dc around. Join. Fold hat and, working through both thicknesses to join, make sc in each dc across top. Break off.

HAT BRIM . . . Starting at center with Orange, ch 28. Join with sl st to form ring. **1st rnd:** Sc in same place as sl st, sc in next 13 ch, half dc in next ch, 2 dc in next ch, 2 tr in each of next 10 ch, 2 dc in next ch, half dc in next ch. Join. **2nd rnd:** Sc in each sc, half dc in next half dc, 2 dc in next dc, dc in next dc, 2 tr in each tr, dc in next dc, 2 dc in next dc, half dc in next half dc. Join. **3rd rnd:** Sc in each sc and in next 7 sts, half dc in next st, dc in next st, tr in each st around to within last 9 sts, dc in next st, half dc in next st, sc in each remaining st. Join. **4th rnd:** Sc in same place as sl st, half dc in next st, dc in next 3 sts, 2 dc in next st, dc in next 4 sts, 2 dc in next st, half dc in next st, sc in next 10 sts, half dc in next st, 2 dc in next st, tr in each st across back to within last 12 sts, increasing 6 tr evenly across, 2 dc in next st, half dc in next st, sc in each remaining st. Join and break off. Sew hat brim in place on head.

HAT BAND . . . With Blue make a chain 4½ inches long, sc in 2nd ch from hook and in each ch across. Break off. Sew in place around hat.

TRIM . . . With Orange, ch 25, tr in 5th ch from hook, tr in next 7 ch, in next ch make 2 tr and dc; skip 2 ch, sl st in next ch, skip 2 ch, in next ch make 2 dc, 3 tr and 2 dc; skip 2 ch, sl st in next ch, skip 2 ch, in next ch make 2 dc, tr, (4 dc, tr) twice and 2 dc. Work along opposite side of starting chain to correspond. Break off. Make another piece the same way. Sew a piece to each pants leg. Sew 2 blue buttons to each piece. Sew white buttons in place for eyes. Embroider mouth and hair on head. Cut 4 pieces of ribbon each 6 inches long, insert a piece through a spool of sewing thread and sew loose ends securely into sleeve. Complete other sleeve and pants legs the same way. With Blue make a chain 8½ inches long, sc in 2nd ch from hook and in each ch across. Break off. Sew to waist, forming 3 loops across front to hold 2 spools of darning thread and a thimble. Tie assorted colors of embroidery floss around neck into a loose bow.

Practical,



HANDKERCHIEFS

HEART S-146 Directions below
ZODIAC S-147 and FLOWER S-148
. . . Directions on Page 10

TANK COVER and TOWEL SET S-149 and
SHOE TREE MITTS S-150
. . . Directions on Page 9

WASHCLOTHS. Directions on Page 8



Heart Handkerchief

S-146

Illustrated above

MATERIALS:

J. & P. COATS TATTING-CROCHET,
Art. A.21, Size 70: 2 balls of White
and 1 ball of No. 126 Spanish Red.

Milwards Steel Crochet Hook No. 14.

A red handkerchief, 12 inches square.

HEART (Make 36) . . . Starting at center with White, ch 10. Join with sl st to form ring. 1st rnd: In ring make 4 sc, half dc, 4 dc, 3 tr, ch 3, 3 tr, 4 dc, half dc and 3 sc. Join with sl st to first sc. 2nd rnd: Sc in same place as sl st, ch 4, skip 2 sc, (dc in next st, ch 1) 9 times; in next sp make 3 dc, ch 3 and 3 dc; (ch 1, dc in next st) 9 times; ch 4, sl st in first sc. 3rd rnd: 5 sc in next sp, 2 sc in each of next 9 sps, sc in next 3 dc, 5 sc in next sp, sc in next 3 dc, 2 sc in

Continued on page 10

Pretty . . . and under a dollar

Jiffy Doily S-141

Illustrated below at right

MATERIALS:

J. & P. COATS "KNIT-CRO-SHEEN," Art. A.64: 1 ball each of White and No. 123-A Flamingo; or

J. & P. Coats or Clark's O.N.T. Pearl Cotton, Art. A. or B.19, Size 5: 6 balls of White and 3 balls of a contrasting color of your own choice; or

Clark's O.N.T. Mercerized Bedspread Cotton, Art. B.504: 1 ball each of White and a contrasting color of your own choice.

Milwards Steel Crochet Hook No. 7.
Doily measures 13½ inches in diameter.

GAUGE: Each motif measures 4½ inches in diameter.

FIRST MOTIF . . . Starting at center with White, ch 8. Join with sl st to form ring. **1st rnd:** Ch 6, (dc in ring, ch 3) 5 times. Join to 3rd ch of ch-6. **2nd rnd:** In each sp around make sc, half dc, 3 dc, half dc and sc. Join. **3rd rnd:** * Ch 5, sc around bar of next dc on first rnd. Repeat from * around. Join. **4th rnd:** In each loop around make sc, half dc, 5 dc, half dc and sc. Join. **5th rnd:** * Ch 7, sc in back loop of sc between this and next petal. Repeat from * around. Join. **6th rnd:** In each loop around make sc, half dc, 7 dc, half dc and sc. Join. **7th rnd:** * Ch 9, sc in back loop of sc between this and next petal. Repeat from * around. Join. **8th rnd:** 12 sc

in each loop around. Join. **9th rnd:** Sc in same place as sl st, * ch 6, skip 2 sc, sc in next sc. Repeat from * around. Join. **10th, 11th and 12th rnds:** Sl st to center of next loop, sc in same loop, * ch 7, sc in next loop. Repeat from * around. Join. Break off at end of 12th rnd.

SECOND MOTIF . . . Work as for First Motif until 11 rnds have been completed. **12th rnd:** Sl st to center of next loop, sc in same loop, ch 3, sl st in any loop on First Motif, ch 3, sc in next loop on Second Motif, (ch 3, sl st in next loop on First Motif, ch 3, sc in next loop on Second Motif) twice; complete rnd (no more joinings). Break off.

Continued on page 11



Rain Drop Washcloth

S-143



Illustrated on Page 6

MATERIALS:

J. & P. COATS or CLARK'S O.N.T. PEARL COTTON, Art. A. or B.19, Size 5: 1 ball of No. 37 Dk. Lavender; or

J. & P. Coats "Knit-Cro-Sheen," Art. A.64: 1 ball of a color of your own choice; or

Clark's O.N.T. Mercerized Bedspread Cotton, Art. B.504: 1 ball of a color of your own choice.

Milwards Steel Crochet Hook No. 7.

A yellow washcloth.

Starting at narrow edge, ch 10. **1st row:** * Holding back on hook the last loop of each dc, make dc in 4th ch from hook and in next 6 ch, thread over and draw through all loops on hook (cluster made), ch 15. Repeat from * until piece reaches around outer edge of washcloth, ending with a cluster, ch 5, sl st in tip of first cluster.

HEADING . . . Now work around inner edge as follows: Sl st in next sp, 5 sc in same sp, * ch 3, 5 sc in next sp. Repeat from * around. Join and break off. Sew edging to washcloth.

Shamrock Washcloth

S-142

Illustrated on Page 6

MATERIALS:

J. & P. COATS "KNIT-CRO-SHEEN," Art. A.64: 1 ball of No. 49 Char-treuse Green; or

J. & P. Coats or Clark's O.N.T. Pearl Cotton, Art. A. or B.19: 1 ball of a color of your own choice; or

Clark's O.N.T. Mercerized Bedspread Cotton, Art. B.504: 1 ball of a color of your own choice.

Milwards Steel Crochet Hook No. 7.

A flamingo washcloth.

Starting at narrow edge, ch 5. **1st row:** Holding back on hook the last loop of each tr, make 2 tr in 5th ch from hook, thread over and draw

through all loops on hook (cluster made), ch 5, sl st in same ch, (ch 5, cluster in same ch, ch 5, sl st in same ch) twice; * ch 17, cluster in 5th ch from hook, (ch 5, sl st in same ch, ch 5, cluster in same ch) twice; sl st in last cluster made on previous group of clusters, ch 5, sl st in same ch as last cluster. Repeat from * until piece measures same as outer edge of washcloth, ending with ch 12. Join to base of first group of clusters. Break off. Sew edging to washcloth.

FLOWER (Make 5) . . . Starting at center, ch 5, cluster in 5th ch from hook, (ch 5, sl st in same ch, ch 5, cluster in same ch) twice; ch 5, sl st in same ch, ch 25 for stem. Break off. Sew flowers to corner of washcloth.

Rosebud Washcloth

S-145

Illustrated on Page 6

MATERIALS:

J. & P. COATS or CLARK'S O.N.T. PEARL COTTON, Art. A. or B.19, Size 5: 1 ball each of No. 4-A Mid Pink, No. 46-A Mid Rose and No. 48 Hunter's Green; or

J. & P. Coats "Knit-Cro-Sheen," Art. A.64: 1 ball each of 3 colors of your own choice; or

Clark's O.N.T. Mercerized Bedspread Cotton, Art. B.504: 1 ball each of 3 colors of your own choice.

Milwards Steel Crochet Hook No. 7.

A grey washcloth.

EDGING . . . Starting at long side with Mid Pink, make a chain slightly longer than outer edge of washcloth. **1st row:** Sc in 2nd ch from hook, * ch 3, skip 3 ch, in next ch make sc, ch 3, dc, ch 1, dc, ch 3 and sc; ch 3, skip 3 ch, sc in next ch. Repeat from * across. Break off. **2nd row:** Attach Mid Rose to first sp, sc in same sp, * (ch 3, sc in next sp) 4 times; sc in next sp. Repeat from * across. Break off.

HEADING . . . Attach Hunter's Green to first sp on opposite side of starting chain. **1st row:** Sc in same sp, * ch 3, skip next sp, sc in ch at base of next group of sts, ch 3, sc in next 2 sps. Repeat from * across. Break off. Sew narrow ends together. Sew Edging around washcloth.

ROSEBUD (Make 3) . . . Starting at center with Mid Pink, ch 10. **1st rnd:** Sc in 2nd ch from hook, half dc in next ch, dc in next 5 ch, half dc in next ch, 3 sc in last ch. Working along opposite side of starting chain, make half dc in next ch, dc in next 5 ch, half dc in next ch, 2 sc in next ch. Join and break off. **Next row:** Attach Mid Rose to back loop of first dc on center and, working in back loop of each st, make sc in next st, half dc in next st, dc in each st to 3-sc group

at end, 2 dc in next sc, dc in next sc, 2 dc in next sc, dc in each remaining st to within last 3 dc, half dc in next dc, sc in next dc, sl st in next dc. Break off.

STEM, CALYX AND LEAF . . .

Mark off 5 dc at center of last row. Attach Hunter's Green to first dc, ch 4, holding back on hook the last loop of each tr, make tr in next 4 dc, thread over and draw through all loops on hook (Calyx made), ch 27, sl st in 2nd ch from hook and in next 12 ch, ch 12, sc in 2nd ch from hook, ch 1, skip 1 ch, dc in next ch, (ch 1, skip 1 ch, tr in next ch) 3 times; ch 1, skip 1 ch, dc in next ch (Leaf made), ch 1, sl st in next ch on stem and in each remaining ch, sl st in tip of Calyx. Break off.

Complete another flower the same way. Make a Calyx on last flower, then ch 20, sl st in 2nd ch from hook and in each ch across, sl st in tip of Calyx. Break off. Sew flowers to corner of washcloth.

Shell Washcloth

S-144

Illustrated on Page 6

MATERIALS:

J. & P. COATS or CLARK'S O.N.T. PEARL COTTON, Art. A. or B.19, Size 5: 1 ball each of No. 11 Orange and No. 8 Blue; or

J. & P. Coats "Knit-Cro-Sheen," Art. A.64: 1 ball each of 2 colors of your own choice; or

Clark's O.N.T. Mercerized Bedspread Cotton, Art. B.504: 1 ball each of 2 colors of your own choice.

Milwards Steel Crochet Hook No. 7.

A blue washcloth.

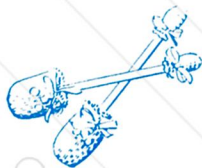
EDGING . . . Starting at narrow edge with Orange, ch 6. **1st row:** * Holding back on hook the last loop of each sc, make sc in 2nd ch from hook and in next 4 ch, thread over and draw through all loops on hook (sc-cluster made), ch 10. Repeat from * until piece is slightly longer than outer edge of washcloth, ending with ch 3, sl st in tip of first cluster.

HEADING . . . Now work around inner edge as follows: **1st rnd:** Sc in same place as sl st, * ch 2, sc in next sp, ch 2, sc in tip of next cluster. Repeat from * around. Join and break off. **2nd rnd:** Attach Blue to first sc, sc in same place, * 2 sc in next sp, sc in next sc. Repeat from * around. Join and break off. **3rd rnd:** Attach Orange to first sc, sc in each sc around. Join and break off.

SCALLOPED EDGE . . . Attach Blue to sp preceding any scallop, sc in same sp, * sc in each st around scallop, sc in next 2 sps. Repeat from * around. Join and break off. Sew edging to washcloth.

Shoe Tree Mitts

S-150



Illustrated on Page 7

MATERIALS:

J. & P. COATS "KNIT-CRO-SHEEN,"
Art. A.64: 1 ball of No. 76 Robin-
ette; or

**J. & P. Coats or Clark's O.N.T. Pearl
Cotton,** Art. A. or B.19, Size 5:
3 balls of No. 24-C Bermuda; or

**Clark's O.N.T. Mercerized Bedspread
Cotton,** Art. B.504: 1 ball of a color
of your own choice.

Milwards Steel Crochet Hook No. 7.

A pair of shoe trees.

1½ yards of white ribbon, ¼ inch
wide.

10 yards of gold metallic thread; ¼
yard of rosebud braid.

Cotton batting for stuffing.

TOE COVER . . . Starting at center,
ch 9. **1st rnd:** 4 dc in 4th ch from
hook, dc in next 4 ch, 5 dc in last ch;
working along opposite side of starting
chain make dc in next 4 ch. Join to top
of starting chain. **2nd rnd:** Ch 3, 3 dc
in each of next 3 dc, dc in each dc
around, making 3 dc in center 3 dc of
next 5-dc group. Join (30 dc). **3rd
rnd:** Ch 3, dc in each dc around mak-
ing 3 dc in center 5 dc at each end.
Join (50 dc). **4th rnd:** Sc in same
place as sl st, skip next dc, * 3 dc in
next dc (shell made), skip next dc, sc
in next dc. Repeat from * around, end-
ing with sc. Do not join. **5th rnd:**
Shell in first sc, * sc in center dc of
next shell, shell in next sc. Repeat
from * around. Continue working as
for 5th rnd until piece measures 3
inches, ending with sc.

BEADING . . . Ch 4, * dc in next sc,
ch 1, dc in center dc of next shell,
ch 1. Repeat from * around. Join to
3rd ch of ch-4.

EDGING . . . 1st rnd: Sc in same
place as sl st, * shell in next dc, sc in
next dc. Repeat from * around. Join.
2nd rnd: Ch 7, sl st in 3rd ch from
hook (picot made), in same place as
sl st make tr, picot and tr; * sc in
center dc of next shell, in next sc make
(tr, picot) twice and tr. Repeat from *
around, ending with sc. Join to 4th ch
of ch-7. Break off. **3rd rnd:** Attach
gold metallic thread to any sc, sc in
same place, * ch 5, sc in center tr of
next tr-group, ch 5, sc in next sc.
Repeat from * around. Join and break
off.

HEEL COVER . . . Starting at center,
ch 2. **1st rnd:** 6 sc in 2nd ch from
hook. Join. **2nd rnd:** Ch 3, dc in same
place as sl st, 2 dc in each sc around.
Join. **3rd rnd:** Ch 3, dc in same place

as sl st, * dc in next dc, 2 dc in next
dc. Repeat from * around. Join. **4th
rnd:** Ch 3, dc in same place as sl st,
* dc in next 2 dc, 2 dc in next dc.
Repeat from * around. Join. **5th, 6th
and 7th rnds:** Ch 3, dc in each dc
around. Join.

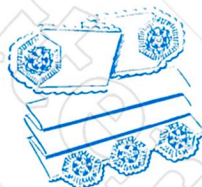
BEADING . . . Ch 4, * skip next dc,
dc in next dc, ch 1. Repeat from *
around. Join.

EDGING . . . Work as for Edging on
Toe Cover.

Cut a piece of ribbon 18 inches
long, lace through ch-1 sps on Toe
Cover, slip cover over shoe tree, stuff
firmly with cotton batting. Tie ribbon
into a bow. Sew a piece of rosebud
braid in place on front. Cut a piece
of ribbon 9 inches long, lace through
sps on Heel Cover, slip cover over
back of shoe tree and stuff firmly with
cotton. Tie ribbon into a bow. Make
another shoe tree the same way.

Tank Cover and Towel Set

S-149



Illustrated
on Page 7

MATERIALS:

**J. & P. COATS BEST SIX CORD MER-
CERIZED CROCHET,** Art. A.104,
Size 30: 2 balls of No. 49 Chartreuse
Green and 1 ball each of White and
No. 123-A Flamingo; or

**Clark's O.N.T. Best Six Cord Mercerized
Crochet,** Art. B.4, Size 30: 5 balls
of main color and 2 balls each of
1 contrasting color and White; or

Clark's Big Ball Mercerized Crochet,
Art. B.34, Size 30: 2 balls of No. 49
Chartreuse Green and 1 ball each of
White and No. 123-A Flamingo.

Milwards Steel Crochet Hook No. 10.
2 white huck towels.

GAUGE: Each motif measures 4¾
inches in diameter.

**GUEST TOWEL MOTIF (Make 3)
—FLOWER—Center Petal . . .** Start-
ing at center with Flamingo, ch 6.
Join with sl st to form ring. **1st rnd:**
Ch 3, 17 dc in ring. Join to top of
ch-3. **2nd rnd:** Sc in same place as
sl st, sc in each dc around. Join. **3rd
rnd:** Sc in each sc around. Join and
break off.

SECOND PETAL . . . Work as for
Center Petal until 2 rnds have been
completed. **3rd rnd:** Sc in first sc,
sl st in any sc on Center Petal, sc in
next sc on Second Petal. Complete rnd
as for Center Petal (no more joinings).

THIRD PETAL . . . Work as for
Center Petal until 2 rnds have been
completed. **3rd rnd:** Sc in first sc,

skip 2 sc on Center Petal following
last joining, sl st in next sc, sc in next
3 sc on Third Petal, skip 2 sc on
Second Petal, sl st in next sc, sc in
next sc on Third Petal. Complete rnd
as for Center Petal (no more joinings).

Make 4 more petals, joining them
to Center Petal and previous petal as
Third Petal was joined. Join last petal
to Second Petal, leaving 2 sc free on
each petal between joinings.

Now work around Flower as fol-
lows: Skip 4 sc following joining on
any petal. Attach Chartreuse Green to
next sc. **1st rnd:** Sc in same sc and in
next 2 sc, * ch 11, skip 4 sc on next
petal, sc in next 3 sc. Repeat from *
around. Join. **2nd rnd:** Sc in same
place as sl st, * ch 5, skip next sc,
sc in next sc, in next loop make sc,
half dc, dc, 2 tr and dc; ch 2, in same
loop make 5 d tr, ch 2, dc, 2 tr, dc,
half dc and sc, sc in next sc (triple
scallop made). Repeat from * around.
Join and break off. **3rd rnd:** Attach
White to center d tr of any scallop,
sc in same place, * ch 9, sc in 2nd tr
of next section of same scallop, ch 6,
sc in next ch-5 loop, ch 6, sc in first tr
of first section of next scallop, ch 9,
sc in center d tr of next section of same
scallop. Repeat from * around. Join.
4th rnd: Sl st to center of next loop,
ch 6, dc in same loop, * ch 7, holding
back on hook the last loop of each tr,
make tr in each of next 2 loops,
thread over and draw through all loops
on hook (joint-tr made), ch 7, in next
loop make dc, ch 3 and dc; ch 5, in
next loop make dc, ch 3 and dc. Re-
peat from * around. Join to 3rd ch of
ch-6. **5th rnd:** Sc in same place as
sl st, * 3 sc in next sp, sc in next dc,
7 sc in next sp, sc in next joint-tr,
7 sc in next sp, sc in next dc, 3 sc in
next sp, sc in next dc, 7 sc in next sp
(corner), sc in next dc. Repeat from *
around. Join. **6th rnd:** Ch 3, * (skip
next 3 sc, in next sc make dc, ch 2
and dc) 6 times; skip next 3 sc, in next
sc make (dc, ch 2) twice and dc; (skip
next 3 sc, in next sc make dc, ch 2 and
dc) 7 times. Repeat from * around,
ending with dc in same place as start-
ing chain, ch 2, sl st in top of starting
chain. Join and break off. **7th rnd:**
Attach Flamingo to any ch-2 sp, 2 sc
in same sp, * sc in next 2 dc, 2 sc in
next sp. Repeat from * around, making
3 sc in center dc at each corner. Join
and break off. **8th rnd:** Attach Char-
trreuse Green to center sc of any 3-sc
group, ch 4, in same sc make dc, ch 1
and dc; * (ch 1, skip 1 sc, dc in
next sc) 18 times; ch 1, in center sc
of next 3-sc group make (dc, ch 1)
twice and dc. Repeat from * around.
Join and break off.

Pin motifs in place on towel, hav-
ing equal spaces on each end and be-
tween motifs. Cut away material in
back of motifs, leaving ⅛ inch free
for hem. Sew hem neatly in place.
Attach Chartreuse to edge of towel
and sc closely across. Break off. Sew
motifs in place, joining center dc of
each point to edge of towel.

EDGING . . . 1st row: Attach
Chartreuse to first sc on towel, ch 3,
Continued on page 10

Heart Handkerchief S-146*Continued from page 6*

each of next 9 sps, 5 sc in next sp. Join and break off (57 sc). **4th rnd:** Attach Spanish Red to first sc, sc in each sc around. Join and break off. **5th rnd:** Attach White to 2nd sc, sc in same place, sc in next 2 sc, * in next sc make sc, ch 3 and sc (picot made); sc in next 3 sc. Repeat from * around. Join and break off.

To join hearts: Attach Red to first picot on any heart, ch 9, dc in next picot, * ch 11, sc in next picot, ch 3, dc in next picot, dc in corresponding picot on next heart, ch 3, sc in next picot, ch 5, sl st in last ch-11 made on preceding heart, ch 5, dc in next picot on heart in work, (ch 6, dc in next picot) 3 times. Repeat from * until 8 hearts have been joined, ending with dc in 2nd picot on last heart.

To form corner: Dc in corresponding picot on next heart, ch 6, dc in next picot, ch 3, dc in next picot, ch 6, dc in next picot, dc in corresponding picot on next heart and complete other sides to correspond. Join last heart to first heart to form corner. Join last dc to 3rd ch of starting ch-9. Break off.

HEADING . . . Attach White to ch-3 sp on any corner heart, sc in same sp, ch 10, sc in next dc, * ch 5, sc in next dc, ch 5, dc in next dc, ch 5, tr in next 2 sps, ch 5, dc in next dc, ch 5, sc in next dc. Repeat from * around, working corners as before. Join and break off. Sew edging to handkerchief.

Flower Handkerchief**S-148** Illustrated on Page 6**MATERIALS:**

J. & P. COATS TATTING-CROCHET, Art. A.21, Size 70: 1 ball each of White, No. 43 Dk. Yellow, No. 48 Hunter's Green and No. 69 Lt. Steel Blue.

Milwards Steel Crochet Hook No. 14.

A rolled edge handkerchief, 12 inches square.

FLOWER (Make 14 each of Lt. Steel Blue and Dk. Yellow) . . .

Starting at center, ch 7. Join with sl st to form ring. **1st rnd:** (Ch 5, holding back on hook the last loop of each tr make 3 tr in ring, thread over and draw through all loops on hook—cluster made—ch 5, sc in ring) 5 times. Join and break off. **2nd rnd:** Attach White to any sc between clusters, sc in same place, * ch 5, sc in tip of next cluster, ch 5, sc in next sc. Repeat from * around. Join and break off.

LEAF (Make 28) . . . Starting at center with Hunter's Green, ch 5. Join

with sl st to form ring. **1st row:** (Ch 5, make a 2-tr cluster in ring, ch 5, sc in ring) twice. Break off.

HEADING . . . 1st rnd: Attach White to ring of any Leaf, sc in same place, ch 12, sc between petals on any Blue Flower, sl st across next petal to next sc between petals, ch 12, sc in ring of next Leaf, ch 12, sc between petals on next Yellow Flower, sl st around petal, sc in next sc, ch 12, sc in ring of next Leaf. Continue in this manner until all Flowers and Leaves have been joined. Join last ch-12 to first sc. **2nd rnd:** Ch 5, * dc in next sp, ch 5, sc in same sp, ch 5, sc in ch of next petal, ch 2, sc in next ch of same petal, ch 5, sc in next sp, ch 5, dc in same sp, ch 2, dc in next sc, ch 2. Repeat from * around, ending with ch 2, sl st in 3rd ch of ch-5. **3rd rnd:** Ch 5, dc in next dc, * (ch 5, dc in next sc) twice; ch 2, dc in next sc, ch 5, dc in next sc, ch 5, dc in next dc, (ch 2, dc in next dc) twice. Repeat from * around. Join to 3rd ch of ch-5. **4th rnd:** Ch 5, dc in next dc, * (ch 5, dc in next dc) twice; ch 2, dc in next dc, (ch 5, dc in next dc) twice; (ch 2, dc in next dc) twice. Repeat from * around. Join and break off.

Attach White to edge of handkerchief and sc closely around. Join and break off.

EDGING . . . 1st rnd: Attach White to 2nd free sp preceding any leaf on opposite side of Heading, ch 4, tr in next sp, * ch 5, (sc in next ch on Leaf, ch 3, sc in next ch on same Leaf) twice; ch 5, tr in next 2 sps, ch 3, (sc in ch on next petal of Flower, ch 3, sc in next ch on same petal, ch 5) 3 times; sc in ch of next petal, ch 3, sc in next ch of same petal, ch 3, tr in next 2 sps. Repeat from * around. Join and break off.

Sew Edging in place

Zodiac Handkerchief**S-147** Illustrated on Page 6**MATERIALS:**

J. & P. COATS TATTING-CROCHET, Art. A.21, Size 70: 3 balls of White and 1 ball of No. 43 Dk. Yellow.

Milwards Steel Crochet Hook No. 14.

A rolled edge handkerchief, 13½ inches square.

FIRST STAR . . . Starting at center with White, ch 8. Join with sl st to form ring. **1st rnd:** Ch 3, 24 dc in ring. Join to top of ch-3. **2nd rnd:** Sc in same place as sl st, * ch 4, holding back on hook the last loop of each tr, make tr in next 4 dc, thread over and draw through all loops on hook (cluster made); ch 3, sl st in tip of cluster (picot made), ch 4, sc in next dc. Repeat from * around. Join to first sc made.

SECOND STAR . . . Work as for first rnd of First Star. **2nd rnd:** Sc in same place as sl st, ch 4, cluster over next 4 dc, ch 1, sl st in any picot on

First Star, ch 1, sl st in tip of cluster on Second Star, ch 4, sc in next dc. Complete rnd as for First Star (no more joinings).

Make necessary number of Stars to reach around outer edges of handkerchief, allowing for corners and joining each Star as Second Star was joined to First Star, leaving 1 point free on inner side and 2 points free on outer side. Join last Star to First Star.

HEADING . . . Attach Dk. Yellow to picot on inner side of any star. **1st rnd:** Sc in same place, * ch 9, d tr in next sc on same star, d tr in next sc on next star, ch 9, sc on next picot. Repeat from * across until piece measures same as side, ending with sc in picot.

To form corner: Sc in next picot on next 2 stars, ch 9 and complete rnd, forming remaining corners the same way. Join to first sc. **2nd rnd:** Sl st to center of next sp, ch 10, * tr in next sp, ch 6. Repeat from * across side, ending with tr in last sp preceding corner. Ch 4, skip next sc, tr in next sc, ch 4, tr in next sp and complete rnd, forming other corners as before. Join with sl st to 4th ch of ch-10. Break off.

Sew Edging to handkerchief.

Tank Cover and Towel Set S-149*Continued from page 9*

skip 4 sc, in next sc make (tr, ch 3) 3 times and tr (shell made); skip 4 sc, dc in next sc, shell in last free sc, * skip 2 sps on motif, dc in next sp, skip 3 sps, shell in next dc, skip 4 sps, dc in next sp, skip 4 sps, shell in next dc, skip 3 sps, dc in next sp, skip 2 sps, shell in next dc. Repeat from * across motif, ending with shell in first free sc on towel. Mark off center sc between motifs, dc in center sc between motif and marker, shell in marker, dc between shell and last free sc, shell in last free sc. Complete other motifs and space between motifs the same way. Complete last sp to correspond with first sp, ending with dc in last sc. Break off. **2nd row:** Attach Chartreuse to first sp, in same sp make sc, ch 3 and sc; * (ch 2, in next sp make sc, ch 3 and sc) 3 times; ch 2, sc in next dc. Repeat from * across. Break off. Now work Edging on opposite end as follows: **1st row:** Attach Chartreuse to opposite end of towel, sc closely across. Ch 3, turn. **2nd row:** * Skip 4 sc, shell in next sc, skip 4 sc, dc in next sc. Repeat from * across. Turn. **3rd row:** Repeat 2nd row of opposite end. Break off.

TANK COVER . . . Make 2 motifs as before. Cut a piece of towel 6 x 15½ inches. Pin a motif on each end of material. Cut out material in back of motifs, leaving ⅛ inch for hem. Sew hem neatly in place. With Chartreuse sc closely around. Join and break off. Sew motifs neatly in place. Work Edging around cover and motifs as before. Join and break off.

Starch Tank Cover lightly and press.

Kitchen Judy

S-154

Pot Holder
and Dishcloth



Illustrated on Back Cover

MATERIALS:

J. & P. COATS "KNIT-CRO-SHEEN,"
Art. A.64: 3 balls of No. 123-A
Flamingo and 1 ball of No. 49
Chartreuse Green; or

J. & P. Coats or Clark's O.N.T. Pearl
Cotton, Art. A. or B.19, Size 5: 8
balls of a main color of your own
choice and 4 balls of a contrasting
color; or

Clark's O.N.T. Mercerized Bedspread
Cotton, Art. B.504: 3 balls of a
main color of your own choice and
1 ball of a contrasting color.

Milwards Steel Crochet Hook No. 7.

A wooden salad spoon and fork.

A piece of white felt, 6½ inches in
diameter.

DISH CLOTH DRESS—Back Yoke

... Starting at bottom with Flamingo,
ch 46. **1st row:** Dc in 6th ch from
hook, * ch 1, skip 1 ch, dc in next ch.
Repeat from * across. Ch 1, turn. **2nd
row:** Sc in first dc, * sc in next sp, sc
in next dc. Repeat from * across, ending
with sc in last sp, sc in next ch.
Ch 4, turn. **3rd row:** Skip first 2 sc,
dc in next sc, * ch 1, skip 1 sc, dc in
next sc. Repeat from * across. Ch 1,
turn. **4th to 7th rows incl:** Repeat
2nd and 3rd rows alternately. **8th row:**
Repeat 2nd row.

To Shape Shoulder: Next row: Skip
first 2 sc, dc in next sc, (ch 1, skip
1 sc, dc in next sc) 6 times. Ch 1, turn.
Following row: Sc in first dc, sc in
each sp and in each dc across, sc in
3rd ch of turning chain. Break off.
Attach Flamingo to other side and
complete to correspond.

FRONT YOKE . . . Starting at bot-
tom with Flamingo, ch 24. Work as
for Back Yoke until 8 rows have been
completed. Shape shoulder same as
back. Make another piece the same way
reversing shapings. Sew up shoulder
seams.

SKIRT . . . 1st rnd: Attach Flamingo
to opposite side of starting chain at
back, sc in first ch, * 2 sc in next sp,
sc in next ch. Repeat from * across
back, sc in first st on front and work
in same manner across both front
pieces. Join to first sc. **2nd rnd:** Sc
in same place as sl st, * ch 4, skip 1 sc,
sc in next sc. Repeat from * around.
Join. **3rd rnd:** Sl st in next loop, ch 7,
in same loop make tr, ch 3 and tr
(shell made); in each loop around
make (tr, ch 3) twice and tr. Join to

4th ch of ch-7. **4th rnd:** Sl st to center
of next sp, sc in same sp, * ch 5, sc
in next sp. Repeat from * around. Join.
5th rnd: Sl st to center of next loop,
shell in same loop, * skip next loop,
shell in next loop. Repeat from *
around. Join. Repeat 4th and 5th rnds
until 17 rnds have been completed.
Join and break off. **18th rnd:** Attach
Chartreuse Green to any sp on last
rnd, and repeat 4th rnd once more.
Join and break off.

Attach Chartreuse to any free sp on
8th rnd of Skirt, sc in same sp, * ch 7,
sc in next free sp. Repeat from *
around. Join and break off.

SLEEVE . . . 1st rnd: Attach Fla-
mingo to base of armhole and sc closely
around. Join. **2nd rnd:** Sc in same
place as sl st, * ch 5, skip 2 sc, sc in
next sc. Repeat from * around. Join.
3rd rnd: Repeat 5th rnd of Skirt.
Break off. **4th rnd:** Repeat 18th rnd
of Skirt. Complete other sleeve the
same way.

COLLAR . . . Attach Flamingo to
neck edge of Left Front, sc closely
across both fronts and around neck.
Join and turn. **Now work across neck
in rows as follows: 1st row:** Sc in
first sc, * ch 5, skip 2 sc, sc in next sc.
Repeat from * across. Turn. **2nd row:**
Repeat 5th rnd of Skirt. Break off. **3rd
row:** Attach Chartreuse to first loop on
first row of Collar, sc in same place,
ch 5, sc in first sp on 2nd row, * ch 5,
sc in next sp. Repeat from * around
entire Collar. Break off.

CORD . . . Cut 5 strands of Chartreuse
1½ yards long. Twist these strands
tightly. Now double these strands and
give them a twist in the opposite direc-
tion. Knot free ends. Lace Cord through
sps at front and tie into a bow at
waist.

POT HOLDER HAT . . . Starting
at center with Flamingo, ch 4. **1st
rnd:** 14 dc in 4th ch from hook. Join
to top of starting chain. **2nd rnd:** Ch 3,
dc in same place as sl st, 2 dc in each dc
around. Join. **3rd rnd:** Ch 3, dc in
same place as sl st, * dc in next dc,
2 dc in next dc (1 dc increased). Re-
peat from * around. Join. **4th rnd:**
Ch 3, dc in same place as sl st, * dc in

next 2 dc, 2 dc in next dc. Repeat
from * around. Join. Dc in each dc
around, increasing 15 dc evenly on
each rnd until piece measures 6 inches
in diameter. Break off. With Chartreuse
make another piece the same way.

Cut a piece of felt slightly smaller
than crocheted piece. With wrong sides
facing, insert felt between and, working
through both thicknesses, attach Fla-
mingo to back loop of any dc, sc in
back loop of each dc around. Join.
Next rnd: Sc in same place as sl st,
* ch 5, skip 2 sc, sc in next sc. Repeat
from * around. Join and break off.
Following rnd: Attach Chartreuse to
any loop, sc in same loop, * ch 5, sc
in next loop. Repeat from * around.
Join and break off. With Chartreuse
make a cord as before. Cut Cord in
half and make a bow of one piece.
Sew to Flamingo side of Pot Holder
for front of hat. Slip other piece of
Cord through 10 dc on next to last
Chartreuse rnd at back of hat and tie
around spoon to hold hat in place.
Slip spoon and fork in place and put
on dress.

Jiffy Doily . . . S-141

Continued from page 7

Make 5 more motifs, joining to First
Motif and preceding motif as before,
leaving 1 loop free between joinings
on each motif. Join last motif to Sec-
ond Motif made.

Attach Flamingo to first st on first
rnd of petals on any motif, sc in same
place, sc in each st around, sc in first st
on next rnd of petals and work around
other petals the same way. Complete
all motifs in same manner.

EDGING . . . Attach White to first
free loop on any motif, ch 8, * (sc in
next loop, ch 7) 10 times; sc in next
loop, ch 4, tr in next 2 loops, ch 4.
Repeat from * around, ending with
tr in last loop. Join to 4th ch of ch-8.
Break off. **2nd rnd:** Attach Flamingo
to any loop, make 9 sc in each ch-7
loop and 5 sc in each ch-4 sp around.
Join and break off. Starch lightly and
press.

Abbreviations in Crochet

ch chain	tr treble	rnd round
sc single crochet	sl st slip stitch	incl inclusive
half dc . . . half double crochet	sp space	inc increase
dc double crochet	st(s) stitch(es)	dec decrease

* (asterisk) . . . Repeat the instructions following the asterisk as many
more times as specified, in addition to the original.

Repeat instructions in parentheses as many times as specified. For example:
“(Ch 5, sc in next sc) 5 times” means to make all that is in parentheses
5 times in all.

BOOK No. 278

Creative Commons 4.0 NC SA BY FREE DISTRIBUTION ONLY - NOT FOR SALE

Crochet Money-Makers

FOR YOUR BAZAAR

10¢



J. & P. COATS • CLARK'S **O.N.T.**